

WHISTLER

MINUTES

REGULAR MEETING OF RECREATION LEISURE ADVISORY COMMITTEE

THURSDAY, OCTOBER 10, 2019, STARTING AT 3 P.M.

In the Flute Room

4325 Blackcomb Way, Whistler, BC V8E 0X5

PRESENT:

Member at Large, Chair, J. Chuback
Member at Large, A. Ross (via phone)
Member at Large, D. Clark
Member at Large, K. Paterson
Member at Large, L. Harnish
Whistler Sports Legacies representative, Co-Chair, R. Soane
Councillor, R. Forsyth
Recreation Manager, RMOW, R. Weetman
Manager, Resort Parks Planning, RMOW, M. Pardoe
Parks Planner, Resort Parks Planning, RMOW, A. Oja
Tourism Whistler representative, L. Everest

REGRETS:

Member at Large, D. Ziff
Sea to Sky School District 48 representative, I. Currie
Member at Large, M. Lunn

Meeting called to order at 3:03 pm

ADOPTION OF AGENDA

Moved by L. Harnish
Seconded by R. Forsyth

No additions to the agenda.

That Recreation Leisure Advisory Committee adopt the regular Recreation Leisure Advisory Committee agenda of October 10, 2019.

CARRIED

ADOPTION OF MINUTES

Moved by R. Forsyth
Second by L. Harnish

That Recreation Leisure Advisory Committee adopt the Regular Recreation Leisure Advisory Committee minutes of June 6, 2019.

CARRIED

PRESENTATIONS/DELEGATIONS

Future of Tennis in Whistler

Committee members lead review and discussion regarding recent document “The Future of Tennis in Whistler – Securing the Next Century” prepared by the Whistler Tennis Association.

Key comments from presenting members:

- Tennis has been a great success with community participation.
- Whistler Tennis is looking to see what's next for the tennis community in Whistler.
- Looking for RLAC to review this and have a discussion.

K. Paterson entered the meeting – 3:07pm

- Whistler Tennis Association seeks to promote tennis and reports considerable interest in the club.
- “The Future of Tennis in Whistler – Securing the Next Century” is aiming to retain this part of our community.
- Property owner (Beattie Development) has not come in to the RMOW for any rezoning application.
- Discussion was had regarding other resort communities business model and how can Whistler implement something similar.
- The existing facility is a valuable asset for residents and guests, an important part of the community and need to try to retain it
- Whistler is a world leader in skiing, snowboarding and mountain biking, why not a world leader in tennis?
- We have successful golf courses, why not tennis? The two work well together.
- People will not come to play tennis, but will play tennis if it's provided.
- The current facility is not maintained to a municipal standard as stated in the existing covenant. It is far from the level of Meadow Parks Sports Centre, and is a poor representation of the resort community. How can we make the property owner increase their level of maintenance, repair items requiring attention and reinvest in the facility? Who leads this effort? The RMOW as the covenant with them?
- How can we start a community conversation about what a new multi-use facility that offers weather proofing the resort could be if a rezoning application comes forward? For the artificial turf field a group was put together that initially looked at indoor facilities which eventually led to the outdoor facility.

Covenant clarification: The 1990 Section 215 covenant states in part:

“2e: During the term hereof, [the Grantor] do all things as may be reasonably required to maintain the courts in a clean and attractive condition consistent with the standards set by the Resort Municipality for its parks;

9: “The Grantor may in its sole discretion terminate its obligation to make tennis courts available for public play under this Agreement by either building or paying

cash in lieu for the construction of four public outdoor tennis courts on land provided by the RMOW...”

Council comments: RMOW Council are aware of the situation and sympathise with the tennis community. The developer has not approached the RMOW in any way. Suggest that Whistler Tennis Association come to Council with what it sees as the vision and an understanding of who would runs the facility and the financial implications. Committee members should also be aware of other community needs that potentially could be linked to a possible rezoning including affordable housing and transportation, amongst other items.

Moved R. Soane

Second D. Clark

RLAC recommend the Whistler Tennis Association undertake development of a facility needs and requirements document to provide to RLAC members and Council.

CARRIED

Presentation by Recreation Manager regarding the proposed 4 year fee schedule for Whistler Nordic Trails, Facility rental charges and MPSC admissions & passes. Staff presented the ‘parks and recreation fees and charges’ policy changes which are in preparation for presenting to Council at November 5th meeting.

Discussion was held within the committee.

Moved by R. Soane

Second by R. Forsyth

Fees and charges

That RLAC support the “parks and recreation fees and charges” policy in its amended state.

Moved R. Soane

Second by D. Clark

That RLAC support 2020 Capital Budget Process as presented.

Parks Master Plan project update presented by RMOW staff.

Parks Master Plan

- Phase 1 complete
- Phase 2 substantially complete. Staff presenting a project update to Council on October 22, 2019
- Phase 2a Engagement: Bubble Diagrams and Big Ideas
 - Included June online survey (580 responses) and June public open house (50 attendees)
- Phase 2b Engagement: Bubble Diagrams Refined and Community Priority Ranking

- September online survey (550 responses). Respondents were asked to rank their top three priorities for each of the identified parks with refined bubble diagrams (Rainbow, Meadow, Spruce, Lost Lake, Alpha, Wedge, Parkhurst)

APPENDIX A - Parks Master Plan presentation

- Phase 3 launching soon with an expected end-date of spring 2020. Will include:
 - Conceptual designs for high priority park areas
 - Order of magnitude cost estimates
 - High level prioritization and timeline matrix
 - Complete Engagement Summary Report
- Prioritization criteria to include:
 - Community feedback
 - Alignment with other municipal initiatives including guiding plans, strategies and prospective capital projects
 - Infrastructure condition, anticipated lifespan and risks if not renewed
 - Capacity and conflict issues
 - Universal design, inclusivity, and accessibility
 - Environmental considerations
 - Gap analysis
 - Continuation of high quality park experiences
- Consulting team secured and working on Phase 3.
- Phase 3 community engagement to occur in 2021
- Emerging priority initiatives include:
 - Integrated design plans for Meadow and Rainbow Parks
 - Meadow Park Water Park Replacement
 - Toad migration initiatives at Lost Lake Park
 - Rainbow Park - Valley Trail to Alta Lake Road
 - Alpha Lake Park - Valley Trail to Alta Lake Road Alignment Feasibility Options.

A.Oja left meeting: 4:26pm

Parks Planning Manager presented a general overview of the municipal annual capital budget process and identified potential relevant projects in 2020 and 2021:

- Planning and Strategies
 - Parks Master Plan
 - Recreation Trails Strategy
- Park Master Plan Outcomes
 - Meadow Park Rejuvenation
 - Rainbow Park Rejuvenation
 - Toad migration infrastructure Lost Lake
- Valley Trail
 - Rainbow Park to Scotia Creek
 - Alta Lake Rd to Function Junction
 - Alta Lake Rd between RR tracks and Hwy 99
 - Whistler Way to Golf Course Clubhouse

2020 Capital Budget
Process

- Alignment Feasibility Study – Alpha Lake Park to Alta Lake Rd/RR tracks
- Recreation Trails
 - Recreational Trail Program
 - Alpine Trail Program
- Other Ongoing Improvements
 - Valley Trail access and safety improvements
 - Accessibility Improvements
 - Tennis Court Reconstruction
 - VT Reconstruction
 - Other General park Improvements

Potential 2021 projects:

- Lost Lake Park Gateway Improvements (post washrooms)
- Valley Trail Lighting Alta Vista to Nita Lake
- Valley Trail Alta Vista (part of related underground services upgrade)
- Recreation Trail Maps
- Spruce Grove Ball Diamonds Light Replacement (LED)

Capital project budget engagement opportunity coming in November 2019.

A discussion was had with RLAC members regarding Recreation Trails Strategy (RTS), in particular if one or multiple Committees of Council would be involved in its development.

Recreation Trails Strategy

RMOW are continuing to work towards full initiation of the project including the engagement phase. Development of the RTS will include frequent participation and input by relevant municipal Committees of Council including the RLAC and the Forest Wildlands Advisory Committee. The Trails Planning Working Group will also be engaged. The proposed approach is similar to the recent develop the draft E-Mobility Policy.

MPSC Cardio Room Expansion and Stretching Room Addition

An update and images were provided to the RLAC by RMOW Recreation Manager. The cardio expansion project is on schedule. Completion looking to be 2020.

RLAC member facility tour to be organised in the coming weeks.

An update was provided to the RLAC members.

E-Mobility Device Policy

RMOW's 2019 E-Mobility Device Monitoring Program included:

- Trail and Store Intercept Trail Survey
- Bylaw Park and Trail Ambassadors
- Park and Trail Host Program
- Alpine Ranger Program
- Other initiatives

A Monitoring Summary Report will be developed and provide to the Committee and the general public.

Currently targeting formalization of the draft Policy and associated amendments to the Park Use Bylaw in December 2019 or January 2020.

OTHER BUSINESS

None

NEXT MEETING

Starting at 4 pm November 14, 2019

TERMINATION

Moved by D. Clark
Second by L. Harnish

That Recreation Leisure Advisory Committee terminated the October 10, 2019
Recreation Leisure Advisory Committee meeting at 5:03 pm

CARRIED

Chair, J. Chuback

Recording Secretary, Shannon Perry

Recreation & Leisure Advisory Committee

Regular Meeting
October 10, 2019

RESORT MUNICIPALITY OF WHISTLER

4325 Blackcomb Way

Whistler, BC Canada V8E 0X5

www.whistler.ca

TEL 604 932 5535

TF 1 866 932 5535

FAX 604 935 8109

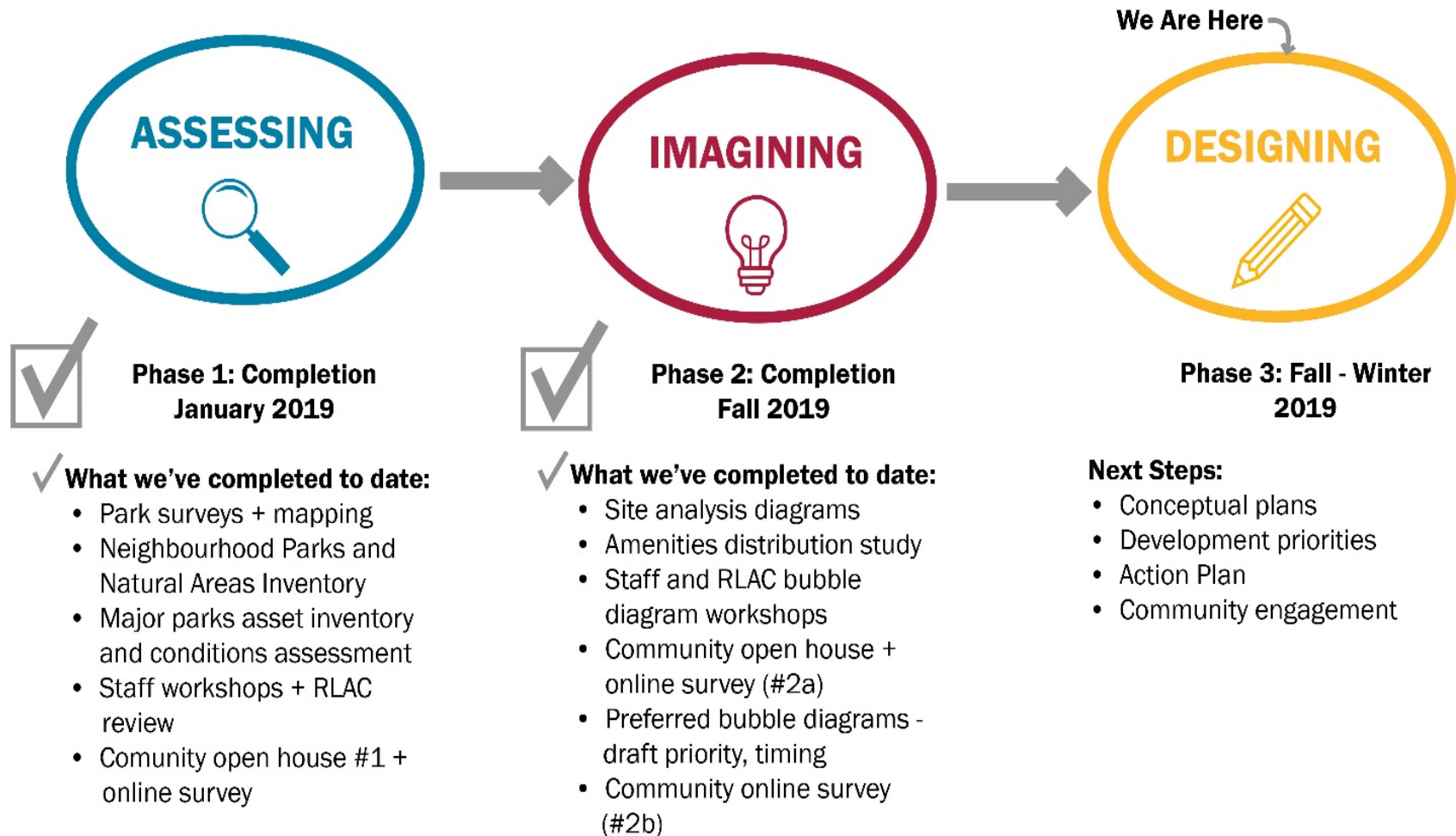


Parks Master Plan Update

- Agenda

- ✓ Over project update
- ✓ Phase 2b feedback
- ✓ Emerging Top Initiatives
- ✓ Next Steps
- ✓ Questions

Parks Master Plan Update



Parks Master Plan Update

- Phase 1 fully complete
- Phase 2 substantially complete
 - ✓ Council update October 22
- Phase 3 about to launch
 - ✓ Consultant team secured and already working
- Anticipated Priority Outcomes
 - ✓ Initial investigative and pre design work underway

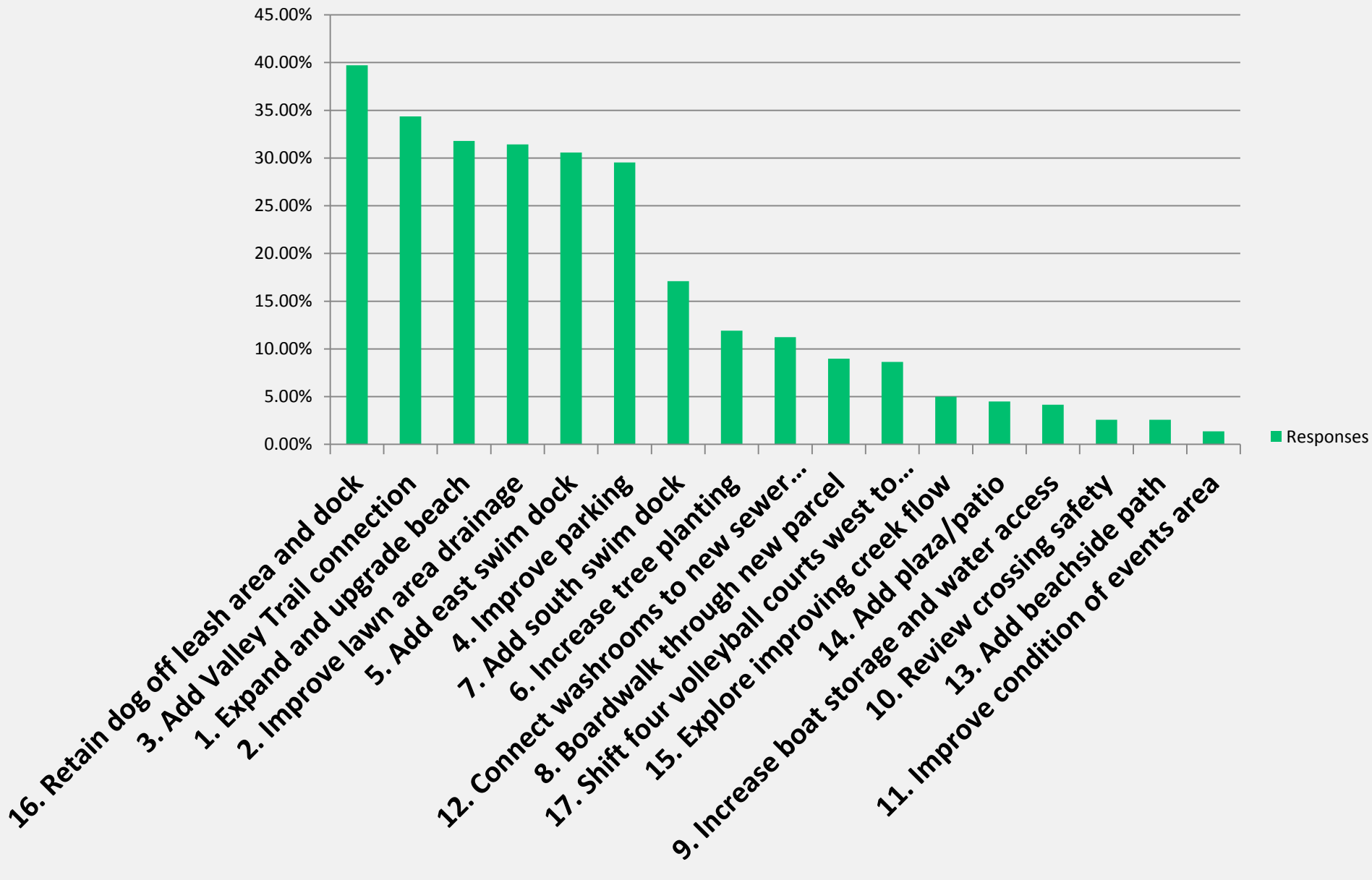
Parks Master Plan Update

- Phase 2 Engagement

- ✓ 2a – Bubble Diagrams and Big Ideas
 - June Open House (50) and Online Survey (580)
 - Results shared previously
- ✓ 2b – Bubble Diagrams Refined, Community Priority Ranking
 - September Online Survey (550)
 - Results shared today

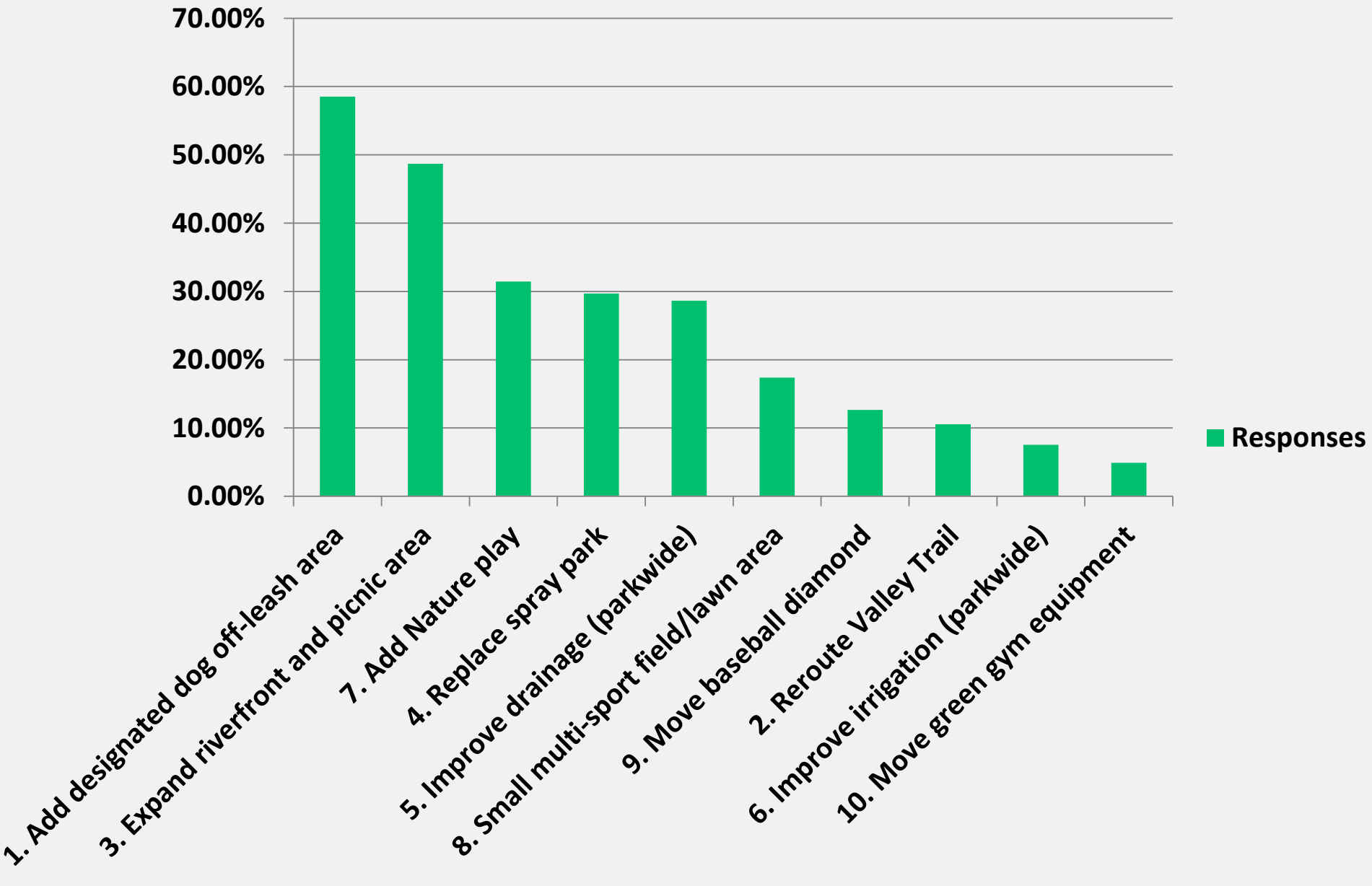
Rainbow Park

Please select your top priorities for this park (choose up to three).



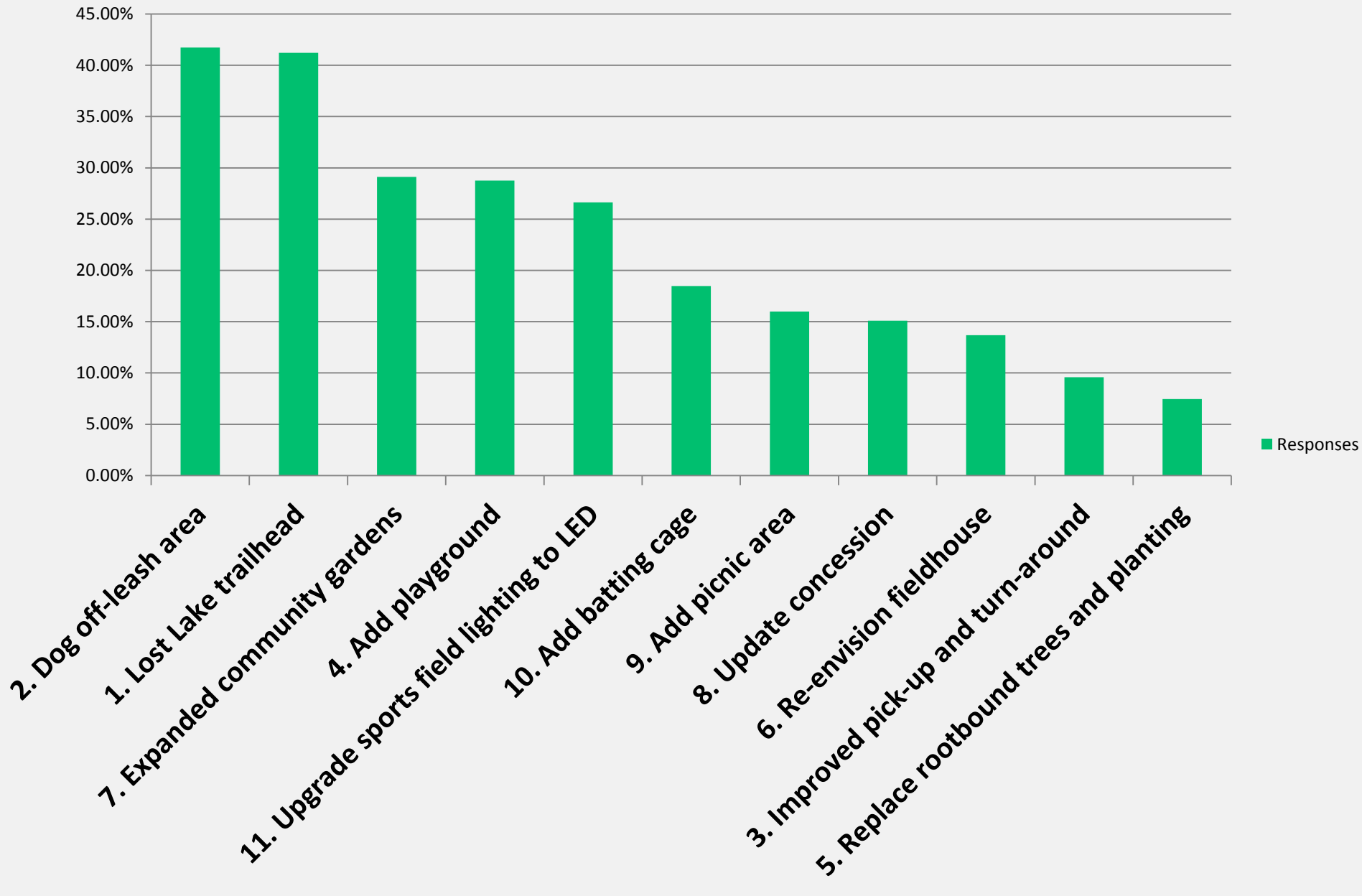
Meadow Park

Please select your top priorities for this park (choose up to three).



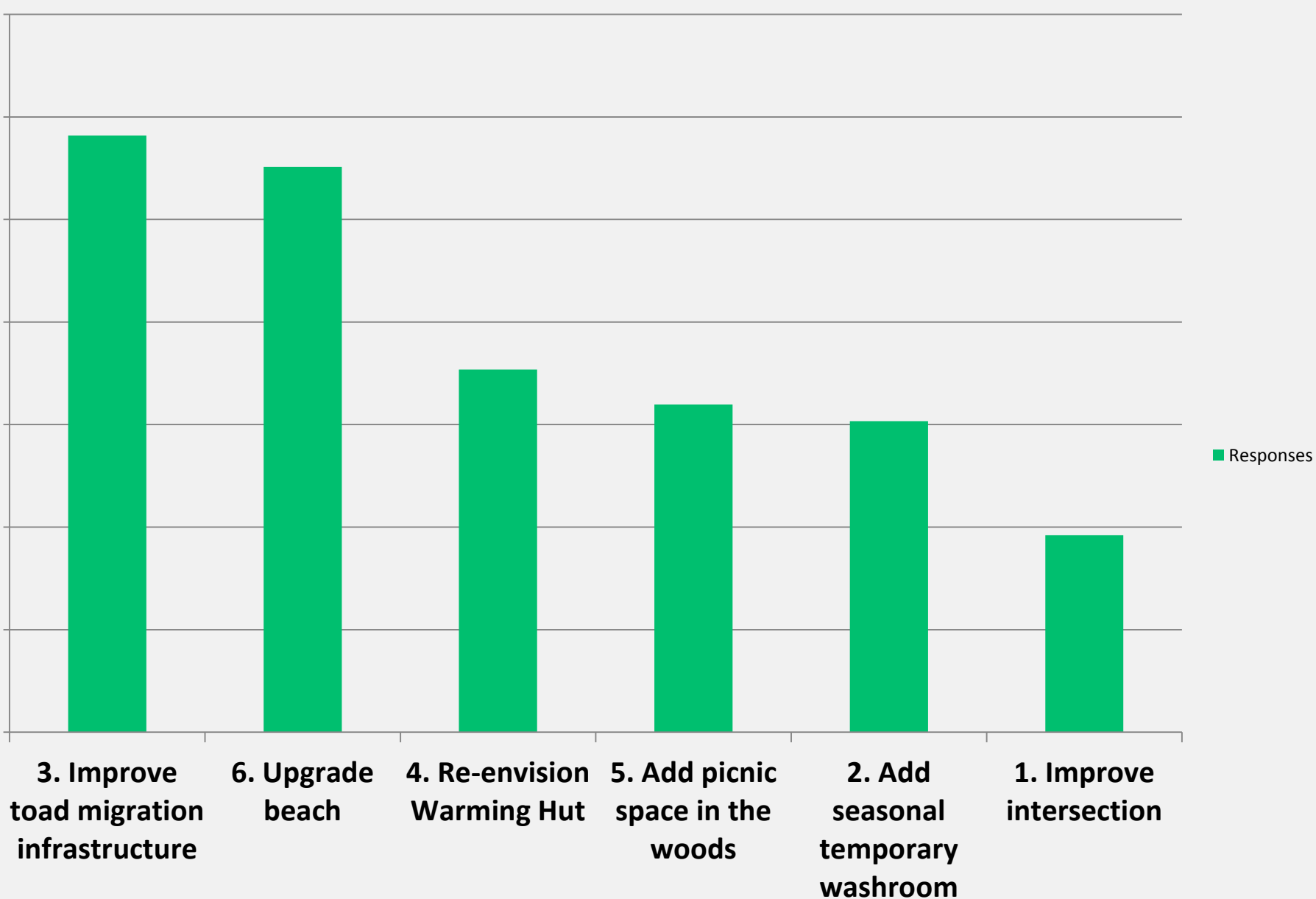
Spruce Grove Park

Please select your top priorities for this park (choose up to three).



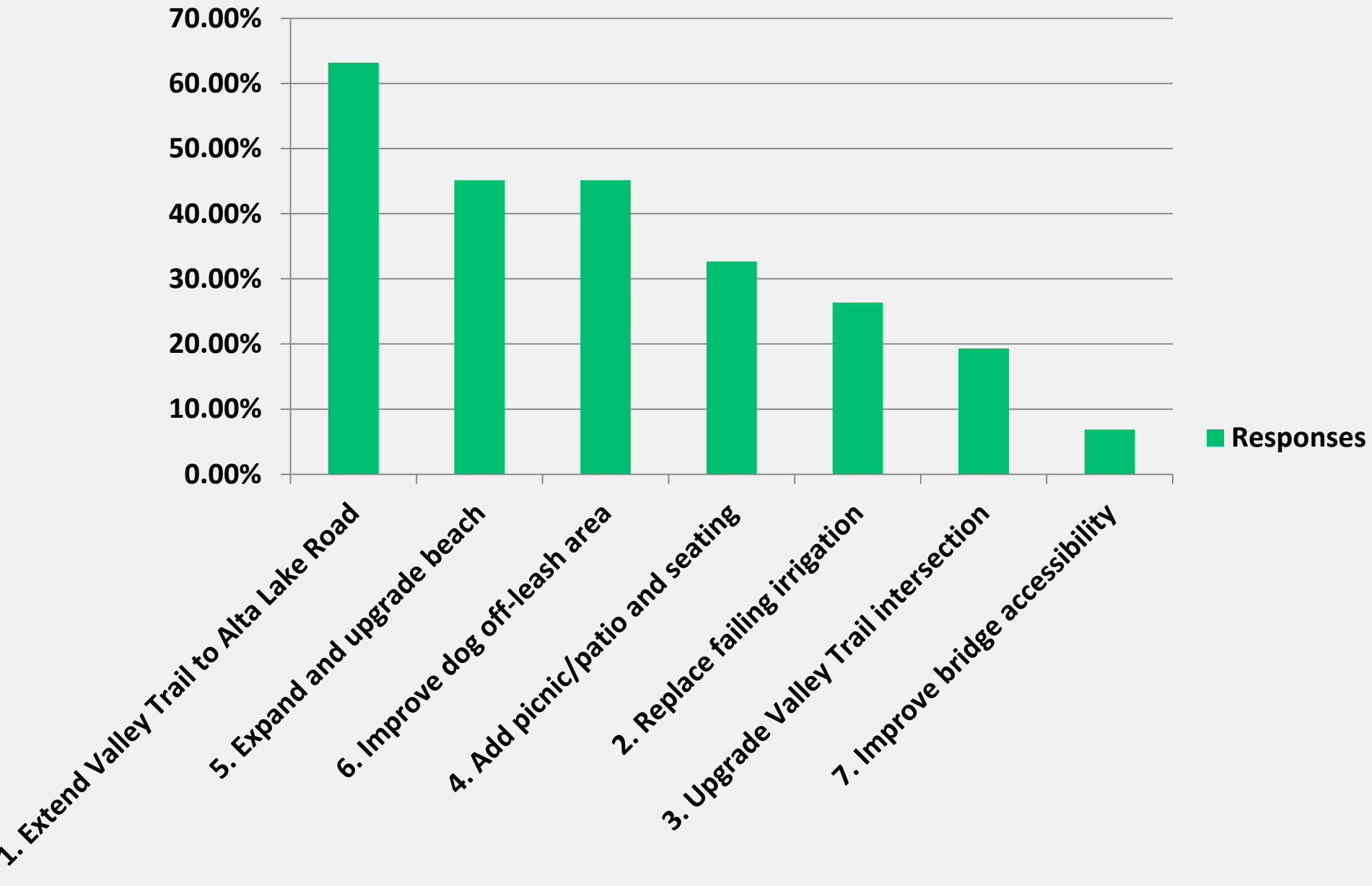
Lost Lake Park – Beach Area

Please select your top priorities for this park (choose up to three).



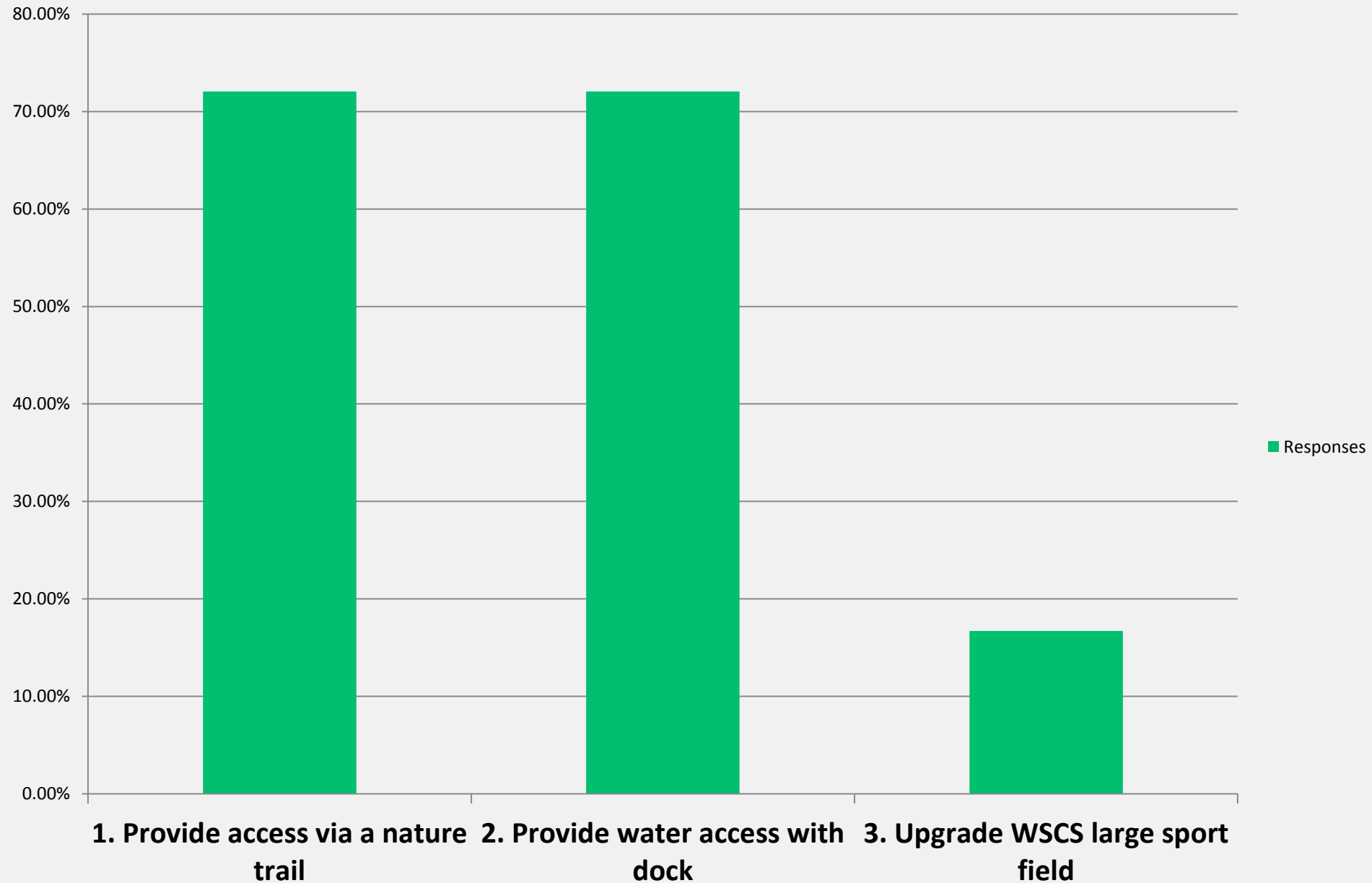
Alpha Lake Park

Please select your top priorities for this park (choose up to three).



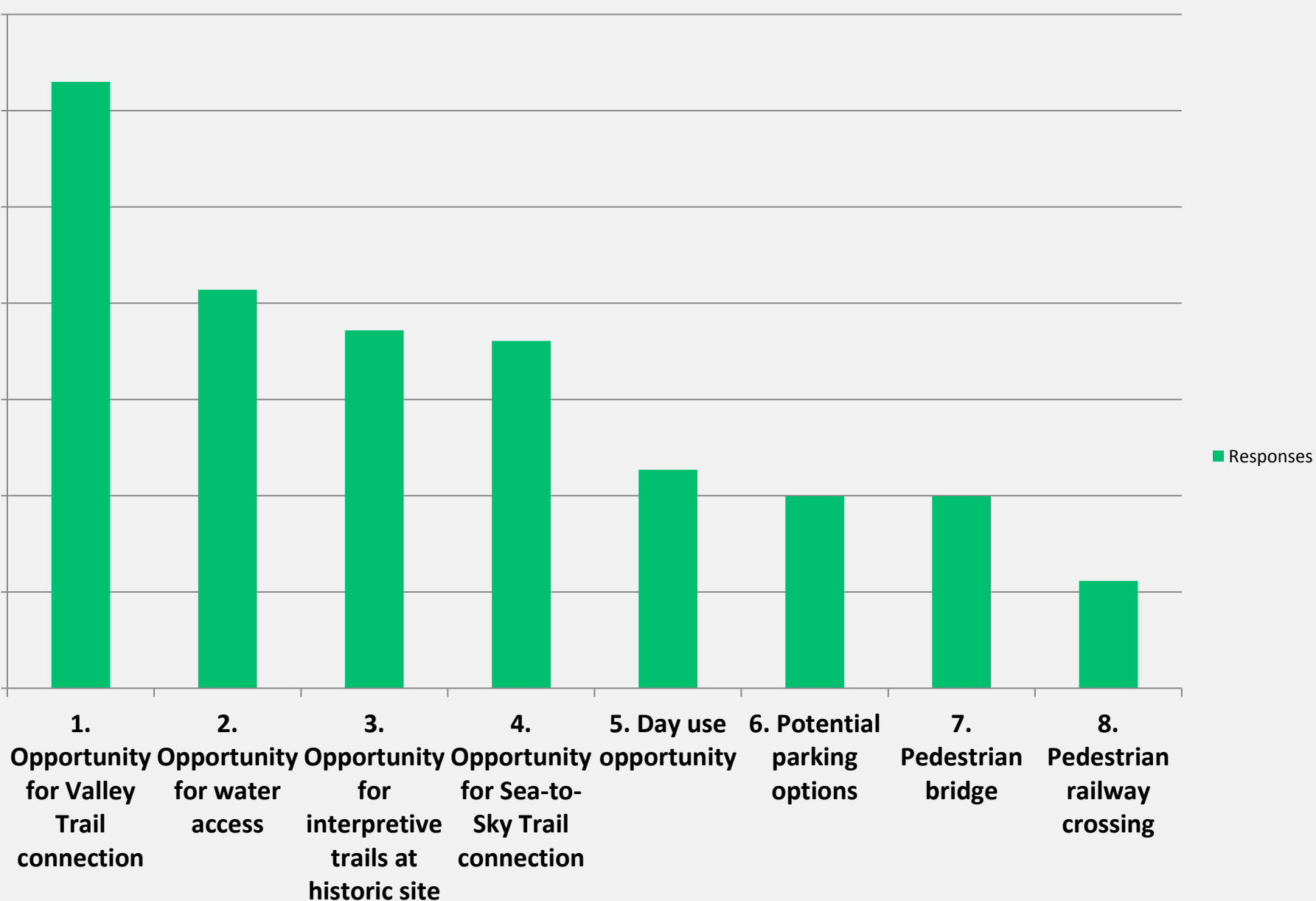
Wedge Park

Please select your top priorities for this park (choose up to two).



Parkhurst

Please select your top priorities for this park (choose up to three).

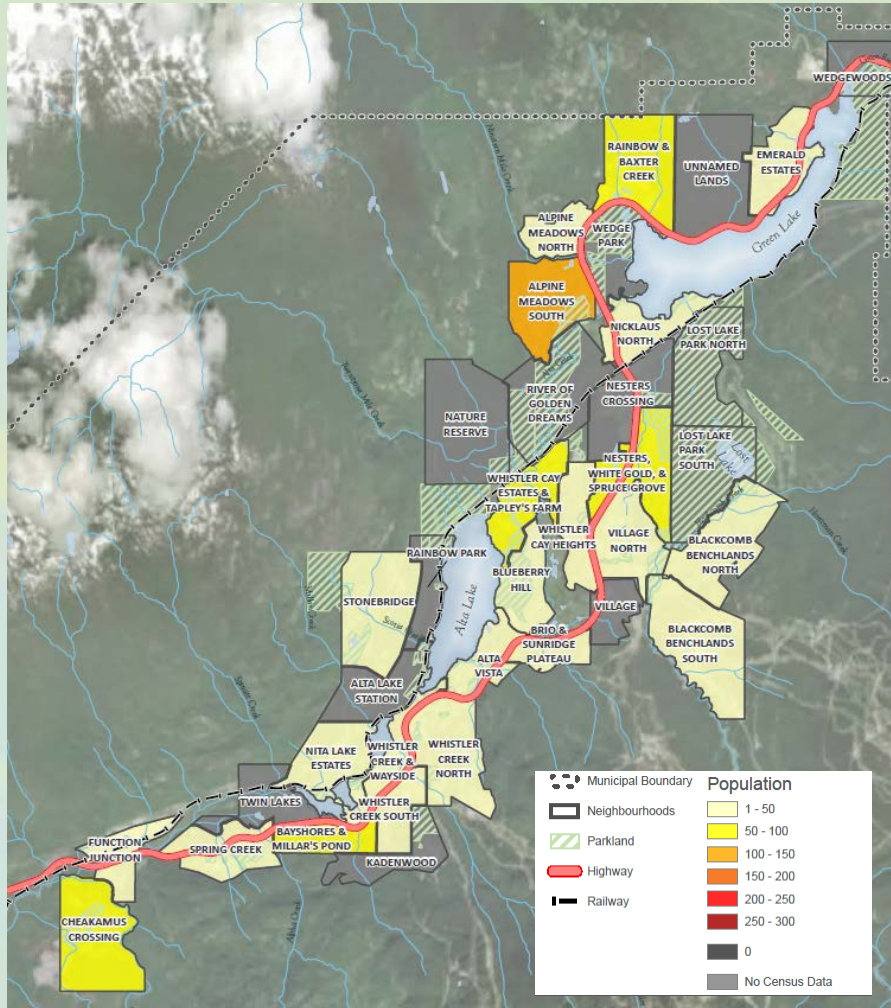


Parks Master Plan Update

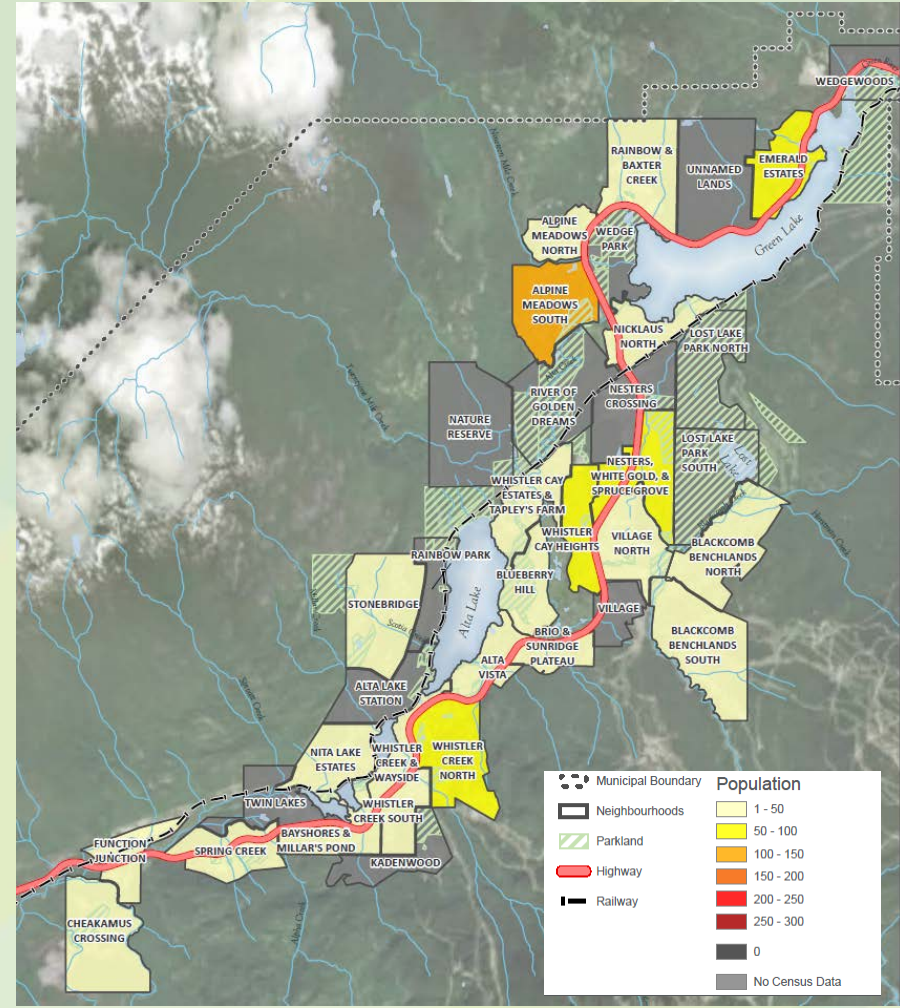
- Population Distribution Maps

- ✓ Show population location by neighbourhood in 10 year increments
- ✓ Based upon 2016 federal census data
- ✓ Useful for locating amenities near relevant population
- ✓ Further work
 - Mapping future population growth

Parks Master Plan Update



10-19 years



60-69 years

Parks Master Plan Update

- Phase 3

- ✓ Schedule
 - Now to spring 2020
- ✓ Includes further community engagement
- ✓ Deliverables
 - Conceptual designs for high priority park areas
 - Order of magnitude cost estimates
 - High level prioritization and timeline matrix
 - Complete Engagement Summary Report

Parks Master Plan Update

- Phase 3

- ✓ Prioritization Criteria

- Community feedback
- Alignment with other municipal initiatives including guiding plans, strategies and prospective capital projects
- Infrastructure condition, anticipated lifespan and risks if not renewed
- Capacity issues
- Universal design, inclusivity, and accessibility
- Environmental considerations
- Gap analysis
- Continuation of high quality park experiences

Parks Master Plan Update

- Emerging Top Initiatives

- ✓ Meadow Park Water Park Replacement
- ✓ Integrated plans for Meadow and Rainbow
 - Phase able, minimize public inconvenience, allow for alignment with other initiatives
- ✓ Toad migration initiatives at Lost Lake Park
- ✓ Rainbow Park - Valley Trail to Alta Lake Road
- ✓ Alpha Lake Park - Valley Trail to Alta Lake Road Alignment Feasibility Options

Parks Master Plan Update

- Next Steps

- ✓ Council Update (Information Report) October 22
- ✓ Launch into Phase 3
- ✓ Pre design Top Initiatives

- Questions?

2020 Capital Budget Process

- Agenda
 - ✓ Overview and Target Schedule
 - ✓ Relevant Potential 2020 Projects
 - ✓ Questions

2020 Capital Budget Process

- Agenda
 - ✓ Overview and Target Schedule
 - ✓ Relevant Potential 2020 Projects
 - ✓ Questions

2020 Capital Budget Process

- Relevant Potential 2020 Projects
 - ✓ Planning and Strategies
 - Parks Master Plan
 - Recreation Trails Strategy
 - ✓ Park Master Plan Outcomes
 - Meadow Park Rejuvenation
 - Rainbow Park Rejuvenation
 - Toad migration infrastructure Lost Lake

2020 Capital Budget Process

- Relevant Potential 2020 Projects
 - ✓ Planning and Strategies
 - Parks Master Plan
 - Recreation Trails Strategy
 - ✓ Park Master Plan Outcomes
 - Meadow Park Rejuvenation
 - Rainbow Park Rejuvenation
 - Toad migration infrastructure Lost Lake

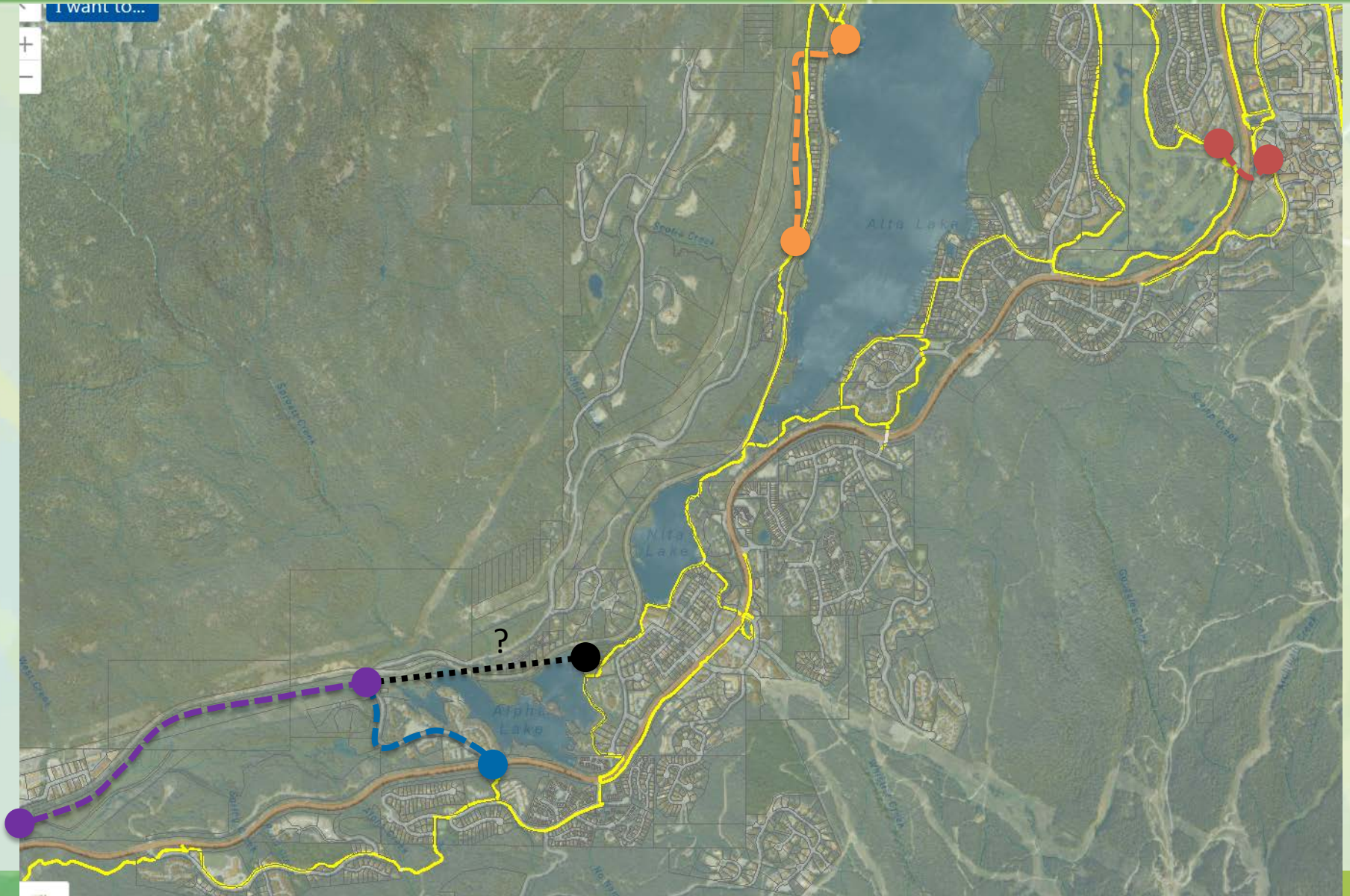
2020 Capital Budget Process

- Relevant Potential 2020 Projects

- ✓ Valley Trail

- VT Access and Safety Improvements
- VT Rainbow Park to Scotia Creek
- VT Alta Lake Rd to Function Junction
- VT Alta Lake Rd between RR tracks and Hwy 99
- VT Whistler Way to Golf Course Clubhouse
- VT Alignment Feasibility Study – Alpha Lake Park to Alta Lake Rd/RR tracks

2020 Capital Budget Process



2020 Capital Budget Process

- Relevant Potential 2020 Projects

- ✓ Recreation Trails

- Recreational Trail Program
 - Alpine Trail Program

- ✓ Other Ongoing Improvements

- Accessibility Improvements
 - Tennis Court Reconstruction
 - VT Reconstruction
 - Other General park Improvements

2020 Capital Budget Process

- Relevant Potential **2021** Projects
 - ✓ Lost Lake Park Gateway Improvements (post washrooms)
 - ✓ VT Lighting Alta Vista to Nita Lake
 - ✓ VT Alta Vista (part of underground service upgrade)
 - ✓ Recreation Trail Maps
 - ✓ Spruce Grove Ball Diamonds Light Replacement (LED)
- Questions?

Recreation Trail Strategy

- Discussion

E-Mobility Device Policy

- Agenda

- ✓ Monitoring
 - Survey results walkthrough
- ✓ Feedback
- ✓ Provincial changes
- ✓ Next steps
- ✓ Discussion
- ✓ Questions

E-Mobility Device Policy

- Monitoring

- ✓ Bylaw Park and Trail Ambassadors
- ✓ Park and Trail Host Program
- ✓ Alpine Rangers
- ✓ Trail and Store Intercept Trail Survey
- ✓ <https://tourismwhistler.ca1.qualtrics.com/Q/MyProjectsSection>

- Community Feedback

- ✓ Correspondence to staff and council
- ✓ Facebook
- ✓ WORCA
- ✓ SAR
- ✓ VCH

E-Mobility Device Policy

- Provincial

- ✓ BC Provincial Parks
- ✓ MVA/ICBC - ability to pilot scooters etc

- Next Steps

- ✓ Monitoring download and collating
- ✓ Understand provincial changes
- ✓ Potentially adjust e-mobility device
- ✓ Update and align Park Use Bylaw to accommodate e-mobility devices as per policy
- ✓ Update other Bylaws for alignment
- ✓ Return to Council for formal policy adoption
- ✓ Continue monitoring

- Discussion/Questions



RESORT MUNICIPALITY OF WHISTLER

4325 Blackcomb Way

Whistler, BC Canada V8E 0X5

www.whistler.ca

TEL 604 932 5535

TF 1 866 932 5535

FAX 604 935 8109

