



## POETRY COMPETITION FOR THE PUBLIC ART PROJECT: "POET'S PAUSE"

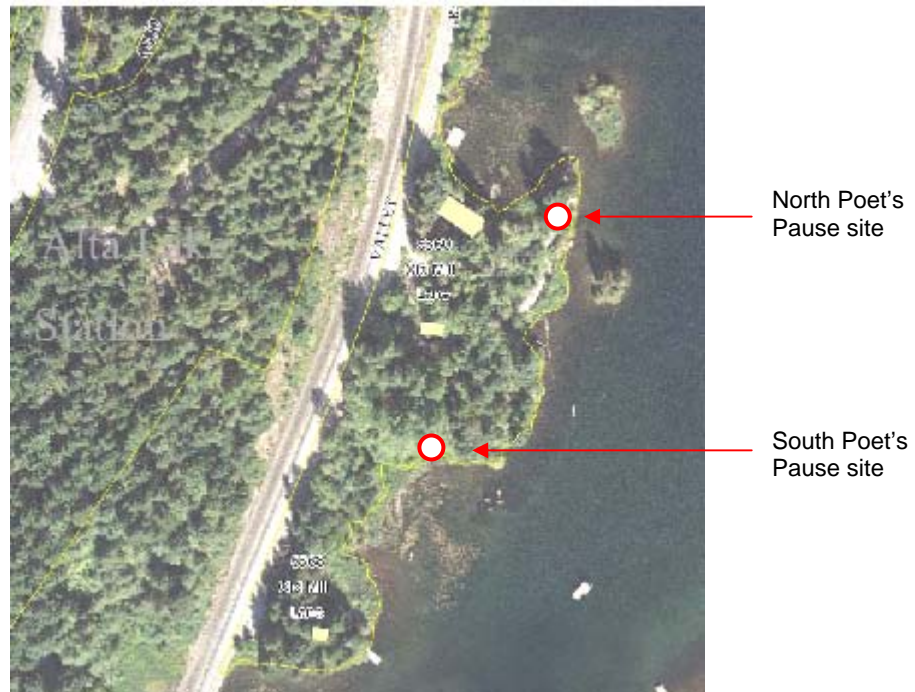
### Introduction

The Resort Municipality of Whistler (RMOW) and the Public Art Committee invite submissions of unpublished, original poetry for display at a public art project developed at two sites in Alta Lake Park. The public art project is known as Poet's Pause.

For this competition, writers are invited to submit poems for one or both of the display sites. The poems should respond to the theme selected for each site.

### The Display Sites:

Alta Lake Park

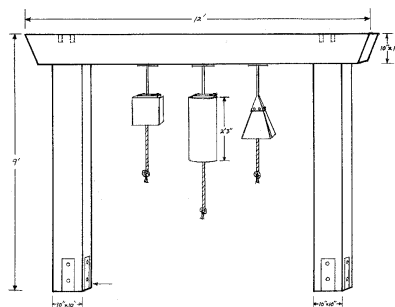


Alta Lake Park features a spectacular location along the southwest shore of Alta Lake. The park is connected to the Valley Trail network with easy trail links to Wayside Park and Alta Lake Road. The park does not have vehicle access (other than for emergency or service vehicles).

### Site One - Alta Lake Park North Site

In the north part of the park there is a house that has been used as a venue for the Whistler Art Workshops on the Lake series, staged by the Whistler Arts Council. It is also the venue for the Whistler Readers & Writers Festival Writer-in-Residence program, staged by the Vicious Circle.

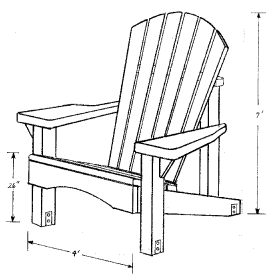
The sculptural setting for the poem at the north site in Alta Lake Park can be found along the path from the house to the lakeshore. The piece is a timber frame structure with large metal chimes. The theme for this site is **Listening**.



Drawing of timber chime structure

### Site Two - Alta Lake Park South Site

The south site in Alta Lake Park is by the lake shore. This site offers a great view of the lake and Whistler Mountain. The sculptural setting for this location is a pair of giant Adirondack chairs. The chairs are large enough to accommodate a couple of adults. The theme for this site is **Togetherness**.



Drawing of chair and photo of artist sitting in chair mock up

Each poem will be mounted on aluminum plate. The plates will be bolted to basalt stones which are located by the sculptures.

Artist Joan Baron has conceived the sculptures to be larger than life as she feels Whistler offers a larger than life experience. The sculptures are intended to inspire and be contemplative places to write.

The north and south sites are linked by a park path that features relics of the old lumber mill that once occupied this land.

### **Poetry Competition Terms of Reference**

1. Apart from the specified themes, the proponent is free to choose the type, size and format of the poem(s). The content cannot be offensive or hateful. It can be fun, serious, controversial, thought provoking, Whistler-centric or not...your choice.
2. The RMOW plans to restage the poetry competition on a regular, perhaps annual, basis, so that a collection of poems may be developed over time. Consequently, each poem will be on periodic, not permanent, display.
3. The RMOW will publish the selected poetry in the local newspapers. Over time, and with the development of a collection of poems, the RMOW may publish the poems for distribution to the public as a Valley Trail brochure or booklet. The RMOW will credit the poet in these publications.
4. The fee for each poem selected through this competition will be **\$200.00**. There will be no compensation for proposals.
5. A jury will review the submissions and make a selection recommendation to the RMOW.
6. The RMOW is not compelled to accept any proposal.
7. Poems submitted for prior Poets Pause competitions can be resubmitted. The jury composition is changed somewhat for each competition.

8. Questions can be forwarded to [kmcfarland@whistler.ca](mailto:kmcfarland@whistler.ca), or call Kevin McFarland at 604-935-8185.

**Submission Requirements:**

1. Proposals can be submitted in paper format or emailed as file attachments. The deadline for proposals is:

**3:00 pm Thursday, August 19, 2010**

Proposals should be submitted to:

or emailed to:

Resort Municipality of Whistler  
4325 Blackcomb Way  
Whistler, BC, V0N 1B4  
Attention: Kevin McFarland

[kmcfarland@whistler.ca](mailto:kmcfarland@whistler.ca)

2. The first stage in the jury review of submissions will be anonymous. Therefore, in submitting a proposal, please do not include your name on the poem. Instead, include a separate envelope or file with your name and contact information.
3. To help us keep track of the submission, please title the poem and include the title in the contact information.

Schedule:

Call for Poets first advertised	Week of July 15, 2010
Deadline for proposals	3:00 pm, Thursday, August 19, 2010
Notification of selection	Week of August 30, 2010
Installation and publication	September 2010 (depending on weather)



Photos taken at the opening ceremony for the Poets Pause project - from the left: poet Mary McDonald, commissioned for *Nature's Orchestra*; Poets Pause sculptor Joan Baron; and poet Pam Barnsley, commissioned for *Two*).

