

WHISTLER

MINUTES

REGULAR MEETING OF RECREATION LEISURE ADVISORY COMMITTEE

THURSDAY, JUNE 14, 2018, STARTING AT 3:00 P.M.

In the Flute Room

4325 Blackcomb Way, Whistler, BC V0N 1B4

PRESENT:

Manager, Resort Parks Planning, RMOW, Martin Pardoe
Recreation Manager, RMOW, Roger Weetman
Member at Large, Chair, Josie Chuback
Member at Large, Kirk Paterson
Member at Large, Roger Soane
Member at Large, Lynda Harnish
Member at Large, Andrew Ross
Member at Large, Murray Lunn
Member at Large, Dave Clark
Councillor, Jen Ford
Recording Secretary, RMOW, Shannon Perry

REGRETS:

Member at Large, Diane Ziff
Tourism Whistler representative, Meredith Kunza
Howe Sound School District 48 representative, Ian Currie

Meeting called to order at 3:05 p.m.

ADOPTION OF AGENDA

Moved by Lynda Harnish
Seconded by Jen Ford

That Recreation Leisure Advisory Committee adopt the Recreation Leisure Advisory Committee agenda of June 14, 2018

CARRIED

ADOPTION OF MINUTES

Moved by Jen Ford
Seconded by Murray Lunn

That Recreation Leisure Advisory Committee adopt the Regular Recreation Leisure Advisory Committee minutes of May 3, 2018.

CARRIED

PRESENTATIONS/DELEGATIONS

Artificial Turf Update An update for the committee on the Artificial Turf Field was provided from the Park Planning Manager.

Artificial Turf Field was approved by council June 5, 2018. Construction scheduled for late June working through to October 2018. Full usage anticipated for the Spring of 2019.

Parks planning manager presented the site development plan in detail to the committee. APPENDIX A

Questions & Answers:

Lynda: will the gravel parking lot be expanded? Staff will wait and see what the demand is like for the parking lot. There is possibility to expand if needed.

Murray: Can the dog park entrance has been adjusted? Suggested moving the entrance to reduce conflict. Yes.

Roger: Can the parking lot have lighting? Can be reviewed.

Jen: Parking signed? There is signage already in place advising people of the parking lot rules (no overnight)

Roger/Jen: Parking is becoming an issue in the Cheakamus community.

Kirk: When does the field close? The Bylaw is 8 am – 8pm. Spruce Grove ballfields in use until 10 pm due to high demand.

Lynda: Has the “trash” settled? Refer to details in March 2017 Council Report #17-017: *“Previous studies have identified a potential landfill membrane settlement of up to 1.75 metres over a 35 year period, starting from landfill closure in 2006. The same amount of settlement is anticipated at the surface. Site excavation in 2011 revealed that the membrane had settled between 0.4 and 0.9 metres, meaning that approximately half of the anticipated settlement had occurred. Additional settlement is expected over the next 25 years through to 2041.”* The RMOW surveyed the membrane again in 2017 and compared elevation information with that from 2011 and determined that on average 10cm of settlement has occurred since 2011. Settlement at turf surface is mitigated by installation of a turf shock pad and the anchoring of the turf surface. Standard practice at time of turf replacement (10-15 years) is to re level the subgrade below the reusable shock pad. The RMOW will continue to monitor the surface for settlement over time.

Roger: Could there be some more room along the sides for when goals are pushed off? Yes, there is goal storage space.

Jen: Will there be a locked gate at the fields? Can the public use it when not booked? The field is surrounded by a chainlink fence with gates. The field will

be bookable, if there is no-one on the field the public are welcome to use it for its intended purposes. This is typical practice in other jurisdictions.

Lynda: Is there potential for the balls go on the Legacy Way? A 1.2m height fence is along this edge of the field, and a landscaped berm beyond that. This is more than the current fence and there hasn't been a problem to date.

A discussion regarding curling in Whistler. This topic was brought to the committee by Councillor Jen Ford. "The mayor was approached by a group interested in bringing a curling rink in Whistler".

Recreation Manager provided an explanation to the Committee as to why Whistler doesn't have curling rink. Included but not limited to:

- Squamish has a curling facility
- \$15 - 20 million approximately to build a simple arena
- Pemberton may have an arena coming in the future
- Building a new rink at Meadow Park would take away from the ball fields.
- Whistler is one of the only locations with 12 month ice arena. MPSC has a lot of hockey tournaments.

Questions & Answers:

Curling

Lynda: Did the open house comments include anything about curling? No.

Jen: During the Olympics there were a private group the sprayed a material on the ice to use it for curling, would this be an option for the RMOW? No. That was at a different time when the ice wasn't in such high demand and there were Olympic resources.

Murray: Noticed that most of Whistler facilities were classified as world class when in fact they are not. That said, for the size and population of Whistler we are very fortunate to have the facilities we do.

Roger W: Regional funding - in 2008 Whistler reacted out to the SLRD and Village of Pemberton for a portion of their regional funding grant. The request was denied. MPSC notes usage from SLRD and the Village of Pemberton residents.

Roger S: Suggested MRDT funding be spent improving recreation facilities. RLAC should highly recommend that to be considered.

Jen: Suggested the RMOW should talking to the SLRD and Village of Pemberton again regarding regional fund sharing.

- OCP (Official
Community Plan)
Update
- An update on the OCP process and Recreation and Leisure Chapter provided by Parks Planning Manager.
- [Community forum June 25, 2018 4pm – 8pm.](#)
 - Use the online tool (include documents from the OCP, survey, feedback) to prepare for the open house.
 - First Nations revisions and reflecting the community vision. /
 - Council looking at streamlining language and meeting the community needs. Team working on the OCP have done a great job in there short time finalising the project.

Opportunity for further input is via the June 25 Forum or online at www.whistler.ca/ocp until July 13.

- Parks Master Plan
- An introduction and overview of the upcoming Parks Master Planning process presented by Manager Parks Planning.
- Overall intent is to develop a prioritized list of capital reinvestment and infrastructure plan.
 - The parks master plan primarily considers major resort parks of Meadow, Rainbow, Lakeside, Wayside, Alpha and Lost Lake Parks.
 - Will also consider neighbourhood and natural area parks, newly acquired parklands, and other areas of interest.
 - Next steps – staff and RLAC discussion, community engagement,
- Will conclude with
- Conceptual Park development and redevelopment plans
 - Prioritized capital reinvestment and infrastructure plan
 - Other recommendations

Committee to provide point of view on the parks. What do you like? What needs to change? What is your vision? Go out and visit the parks.

An overview of new Valley Trail and off road recreational trail maps and trail etiquette signs.

- New Maps
- Parks Planning Manager provided an update on the mapping work that the RMOW have been conducting. The new maps are required due to new trails completed and under construction. There were a number of things that were missing. Focus areas include Whistler Interpretative Forest, Mt Sproatt/Rainbow, Skywalk, Cougar Mountain, Lost Lake, and Comfortably Numb.

Committee reviewed the draft maps and the detailed “recreation information” sign that will be displayed in the kiosks.

Appendix B Sproatt Maps

OTHER BUSINESS

New software at MPSC	Coming to the RMOW the week of June 25, 2018
Cardio expansion	Cardio expansion room is going ahead, architect under review. Construction scheduled to start summer 2019.
MPSC such down	MPSC closed August 20, 2018 - September 03, 2018. Pool closer extended until September 19 for maintenance.
Whistler Blackcomb Foundation social services building future tenancy opportunity	RFEOI now closed – 3 proposals received. Applicants to be presented at Senior Management Wednesday June 20.
Update on SD48	SD48 made the recommendation to the ministry of education board for the construction of a new middle school in Whistler. It was approved and is now going to be incorporated in the 5 year capital plan.

NEXT MEETING

July 26, 2018 3 – 5 pm

TERMINATION

Moved by Lynda Harnish
Second by Andrew Ross

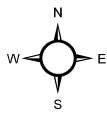
That Recreation Leisure Advisory Committee terminated the June 14, 2018 Recreation Leisure Advisory Committee meeting at 4:37 p.m.

CARRIED

Chair, Josie Chuback

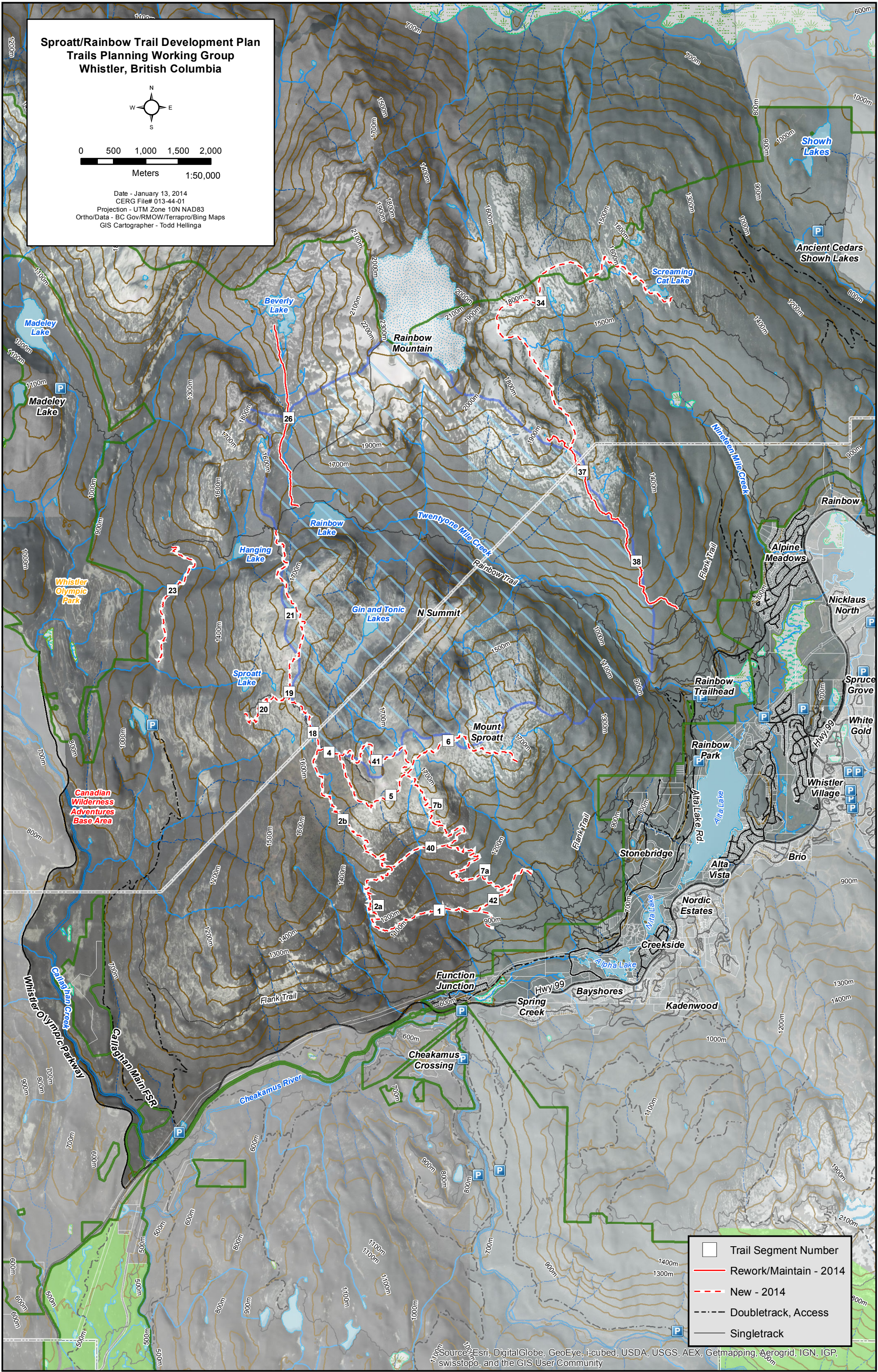
Recording Secretary, Shannon Perry

Sproatt/Rainbow Trail Development Plan
Trails Planning Working Group
Whistler, British Columbia

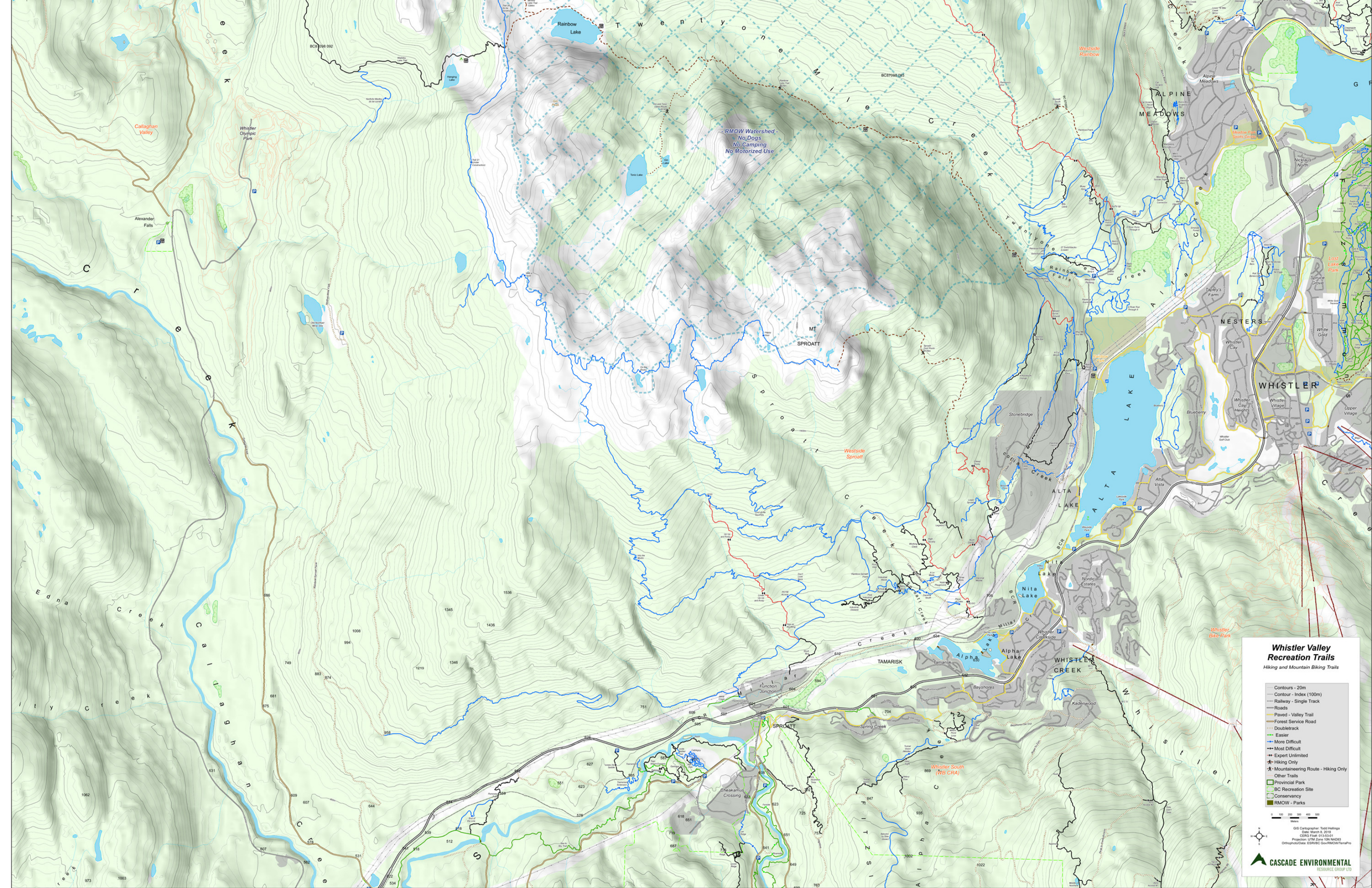


0 500 1,000 1,500 2,000
Meters 1:50,000

Date - January 13, 2014
CERG File# 013-44-01
Projection - UTM Zone 10N NAD83
Ortho/Data - BC Gov/RMOW/Terrapro/Bing Maps
GIS Cartographer - Todd Hellinga



Source: Esri, DigitalGlobe, GeoEye, i-cubed, USDA, USGS, AEX, Getmapping, Aerogrid, IGN, IGP, swisstopo, and the GIS User Community



Whistler Valley Recreation Trails

Hiking and Mountain Biking Trails

- Contours - 20m
- Contour - Index (100m)
- Railway - Single Track
- Roads
- Paved - Valley Trail
- Forest Service Road
- Doubletrack
- Easier
- More Difficult
- Most Difficult
- Expert Unlimited
- Hiking Only
- Mountaineering Route - Hiking Only
- Other Trails
- Provincial Park
- BC Recreation Site
- Conservancy
- RMOW - Parks

0 100 200 300 400 500
Meters

GIS Cartographer: Todd Helling
Date: March 9, 2018
CENR File: 013-53-01
Projection: UTM Zone 18N NAD83
Orthophoto Date: 2018; GeoBC: GeoRMOW/TerraPro

