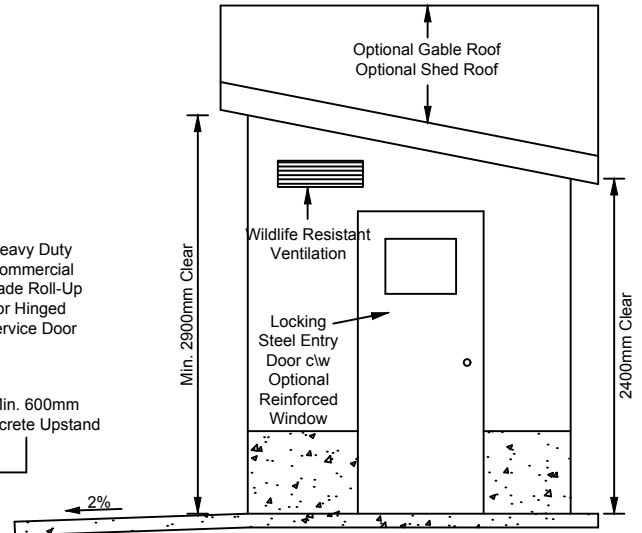


FRONT ELEVATION

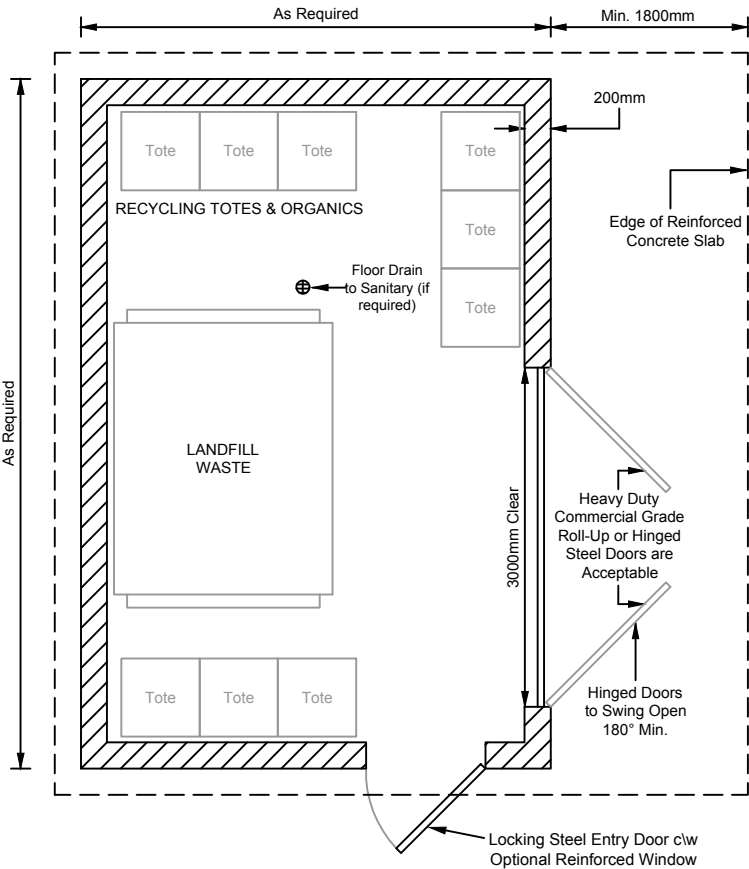
100mm Reinforced Concrete Slab on Compacted Gravel Fill



SIDE ELEVATION

NOTES:

1. Enclosure architecture (materials, etc) is to conform to Municipal Building and Development Permit requirements (as required).
2. Design concept only. Alternative designs meeting the intent of these requirements are invited.
3. Structures are to be constructed in accordance with the BC Building Code. Enclosures are to be designed to withstand snow loading, vehicular damage, operational damage, and bears.
4. Roofs should be designed to avoid snow shed in front of service and entry doors.
5. Service door(s) are to have dual locking mechanisms. Hinged doors require a heavy-duty cane bolt at the bottom and a slide bolt at the top of the stationary door. Roll-up doors require slide bolt locking mechanisms on the bottom of the door, each side. All locking mechanisms to be located on the interior; no hardware should be located on the service door(s) exterior.
6. Steel entry door is to be 36" wide (915mm) and be equipped with a self-closing mechanism. Door may have a round turning knob complete with a covered keyed knob guard on the exterior for access and panic hardware on interior for egress. Alternatively a push button lock with a turning knob is acceptable.
7. Adequate motion activated interior and exterior lighting is to be provided (if required).
8. Bear proof vent and steel entry door window openings should be sized such that a bear could not gain access in the case of breakage.
9. Units in mm unless otherwise noted.
10. Roll-up doors are preferable in areas that may have ice and snow build up but hinged doors are acceptable.
11. Separate enclosures for Commercial & Residential uses on the same property are strongly recommended.



PLAN VIEW

Dimensions shown serve as a guideline only, the ultimate size and configuration of the garbage enclosure will be dependant on the owners preference and services being provided.



WHISTLER

RESORT MUNICIPALITY of WHISTLER

SOLID WASTE WILDLIFE-PROOF ENCLOSURE

DRAWN BY: BL

DATE: JULY 2017

SCALE: N.T.S.

DWG. NO.: G11