

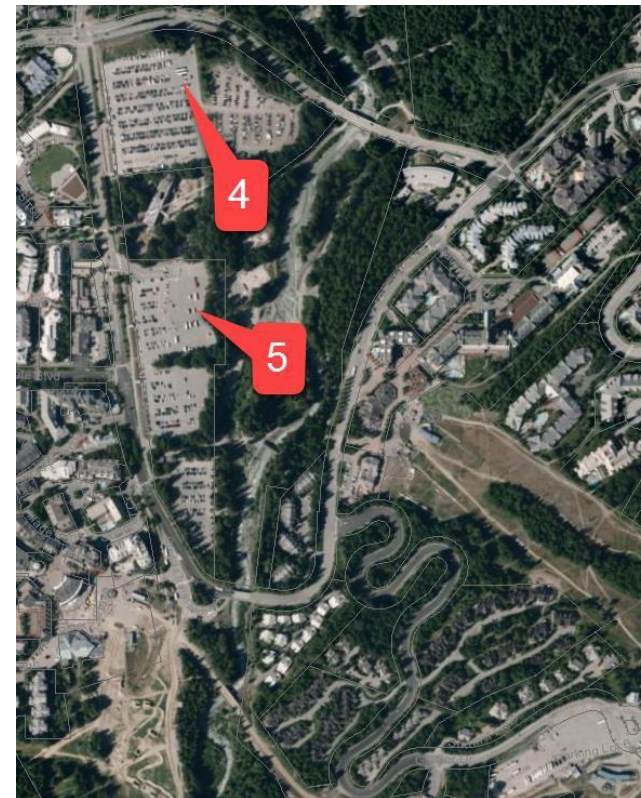
## Commercial Bus Parking

While it is up to individual coach operators to decide where to park their bus while it is in Whistler, the following six locations are recommended:

1. Long-term parking is available at **BC Transit's Facility** in Whistler. For more information, go to the following link:  
<https://bctransit.com/whistler/business/whistler-facility-parking>
2. **Mons Road:** Bus parking on west side shoulder, in designated areas only (overnight parking is permitted).
3. **Nesters Road:** Road shoulder parking in Nesters Crossing industrial area. Bus parking on the north end of Nesters Road (past BC transit Facility).  
Parking on east side shoulder only (overnight parking is permitted).
4. **Day Lot 4:** Full size bus (30+ seats) parking is permitted in the designated Bus Parking Area. Pay parking in effect (\$5.00 per hour or \$25.00 per day).  
Payment can only be completed through paybyphone.com or by downloading the Pay-by-Phone app, lot number 4076 (overnight parking is permitted).
5. **Day Lot 3 East:** Mini bus (Under 30 seats) parking available for the winter only. Pay parking in effect (\$5.00 per hour or \$20.00 per day). Payment can only be completed at the parking meter in Day Lot 3 East. (overnight parking is **NOT** permitted)
6. **Overflow Bus Parking:** Spruce Grove Park Parking Lot 4. Parking Lot 3 available weekends & holidays only.  
No bus parking in Spruce Grove Park Parking Lot 1, Lot 2 or Overflow Lot.

\*Keep Whistler idle free. In Whistler, vehicles are not permitted to park with the engine idling for a period longer than **one minute**.

\*\*Locations 1 - 6 are illustrated on the maps below...





SEE DETAILED  
MAPS ON  
REVERSE

