

WHISTLER PURPLEAIR/BAM NOVEMBER SUMMARY

Monitoring Period: November 1st – November 30th 2023

Location: Whistler, BC, Canada



Figure 1 - Monitoring Locations

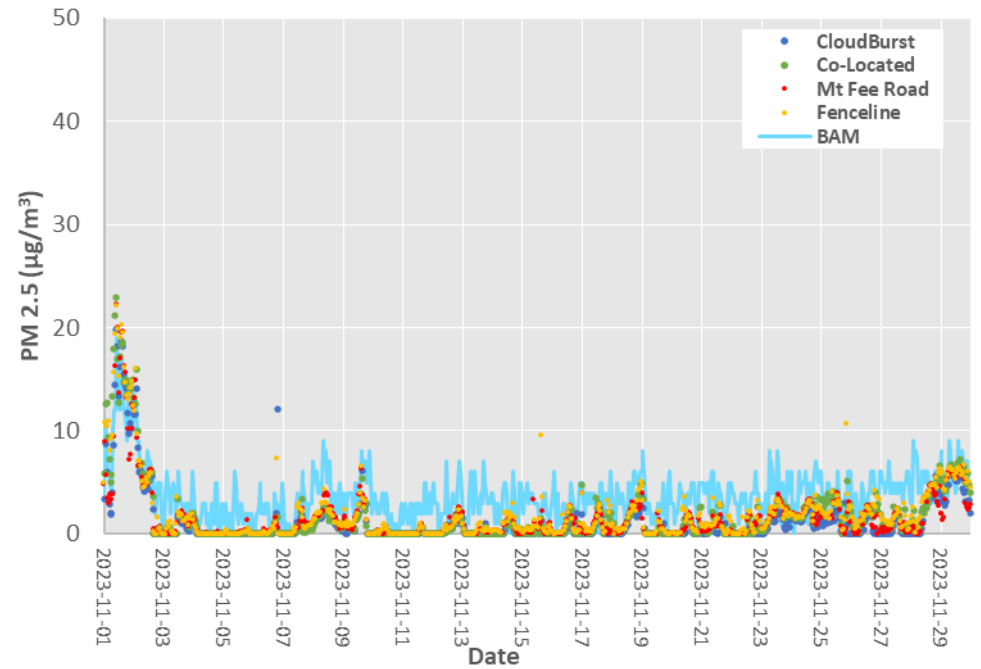


Figure 2 - PM_{2.5} Time Series of Purple Air Monitors and Whistler BAM

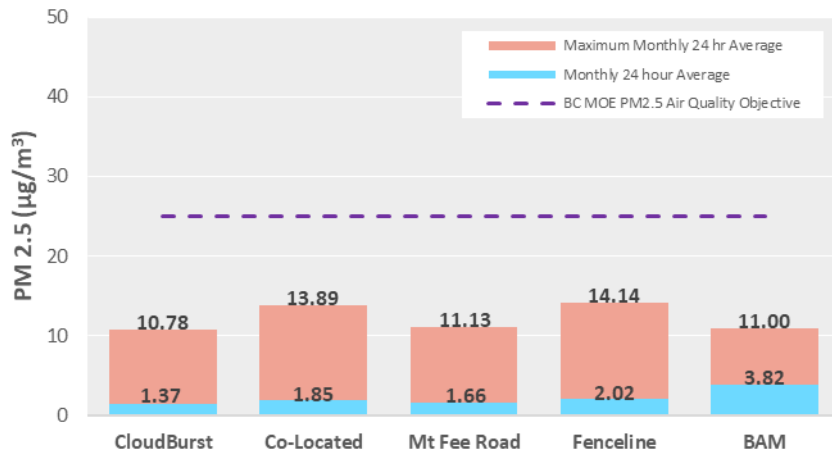


Figure 3 - Monthly Averages and Maximum 24-Hour Averages By Station

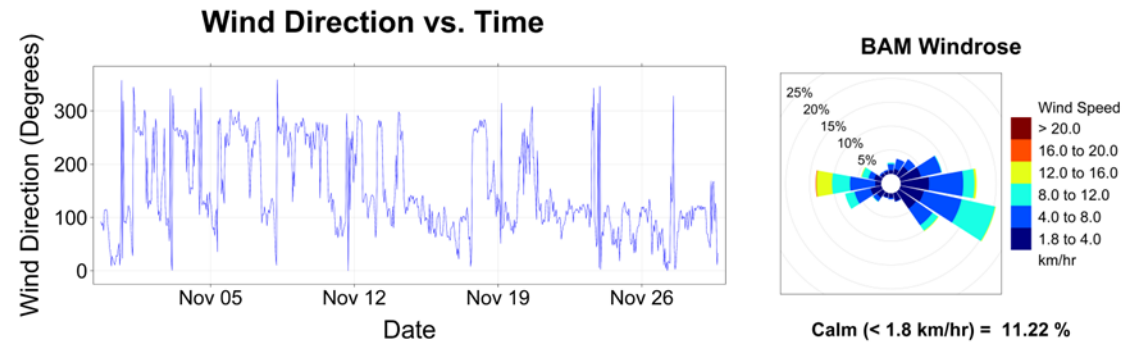


Figure 4 - Wind Direction vs. Time and BAM Windrose

Discussion: The 24-hour maximums for the monitors were all below the BC MOE PM_{2.5} Air Quality Objective as shown in Figure 3.

It was reported by the RMOW that during the end of October and beginning of November there were controlled burns being conducted in the area as part of fire mitigation efforts. This activity is likely the cause of the elevated levels of PM recorded in Figure 2.

Data from the PurpleAir monitors was corrected using Model 7, as suggested by Nilson et al. in the journal Atmospheric Measurement Techniques (<https://doi.org/10.5194/amt-2021-425>).