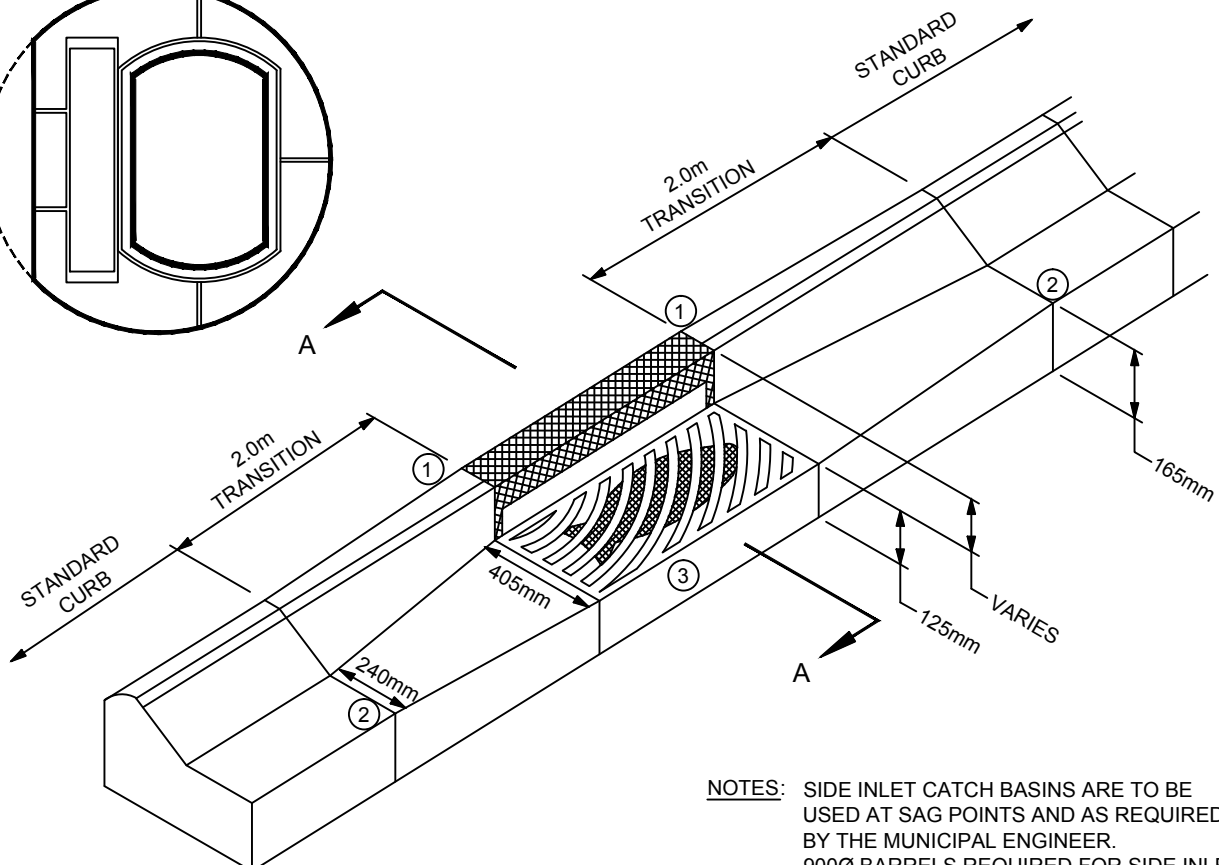


SECTION A-A



NOTES: SIDE INLET CATCH BASINS ARE TO BE
USED AT SAG POINTS AND AS REQUIRED
BY THE MUNICIPAL ENGINEER.
900Ø BARRELS REQUIRED FOR SIDE INLETS.

ADDITIONAL CATCH BASIN GRATE
INFORMATION SUPPLIED ON RMOW
STANDARD DRAWING S12

- ① EXTEND CONCRETE TO MATCH CASTING
- ② EXPANSION JOINT
- ③ KEEP FLUSH WITH CURB FACE



RESORT MUNICIPALITY of WHISTLER

SIDE INLET CATCH BASIN/CURB DETAIL (TYPE A & B CURBS)

DRAWN BY: BL

DATE: JULY 2008

SCALE: N.T.S.

DWG. NO.: S16