

# Whistler Transportation Action Plan Recommendations Medium-Term 2018-2019

Regular Meeting of Council – February 20, 2018

## RESORT MUNICIPALITY OF WHISTLER

4325 Blackcomb Way  
Whistler, British Columbia  
Canada V0N 1B4  
[www.whistler.ca](http://www.whistler.ca)

**TEL** 604 932 5535  
**TF** 1 866 932 5535  
**FAX** 604 935 8109



# Today's agenda

1. Background – TAG process
  - Research and reports
  - 2017 Summer Transportation Actions and Results
  - Actions for this winter
2. 2018 / 2019 Transportation Action Recommendations
3. Next Steps

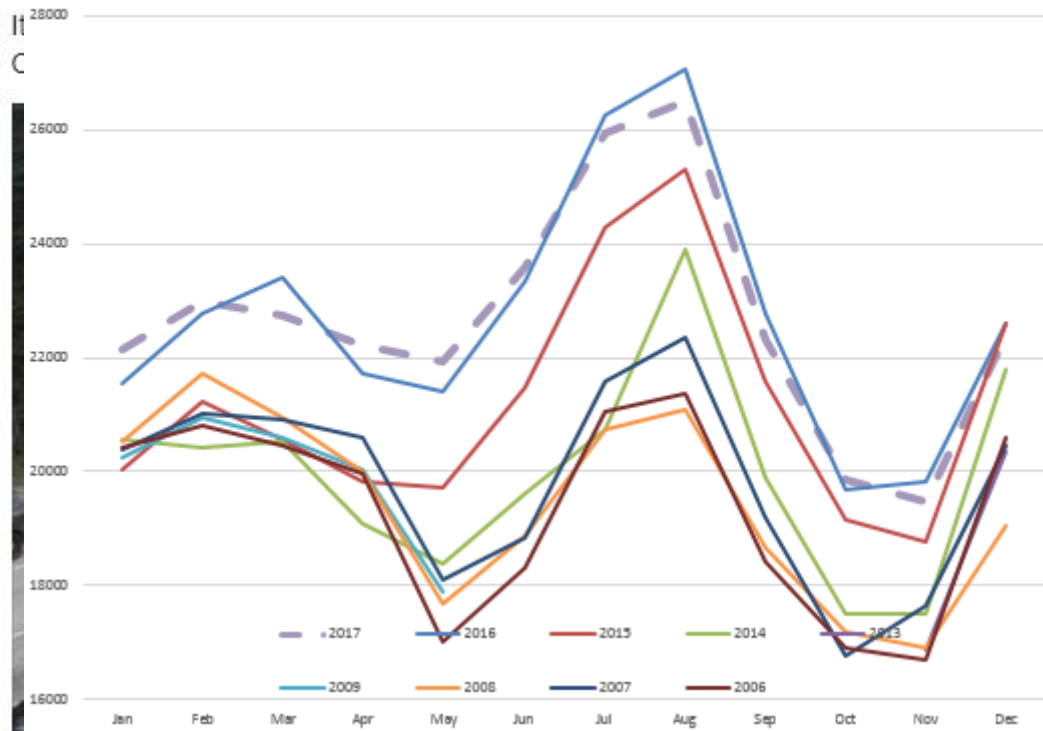
# Background

NEWS



**Traffic congestion marks an**  
Six thousand people attended July 1 VS

## Monthly AADT at Highway 99 and Brio



DriveBC.ca

May 19, 2017 4:40:13 PM





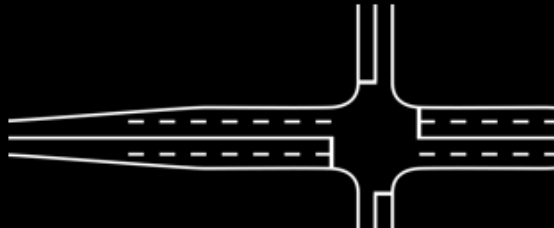
# Research & Reports

## Transportation Engineering 101

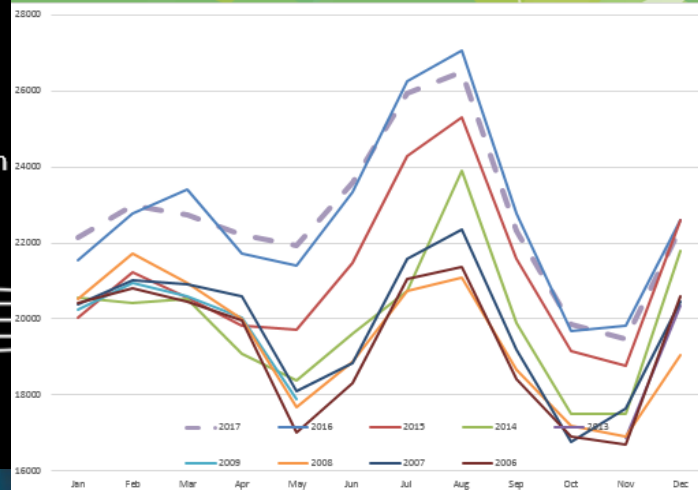
What is the capacity of a road?

Traffic lane:

- Highway = up to 2000 vph
- Signalized intersection = 500–1500 vph



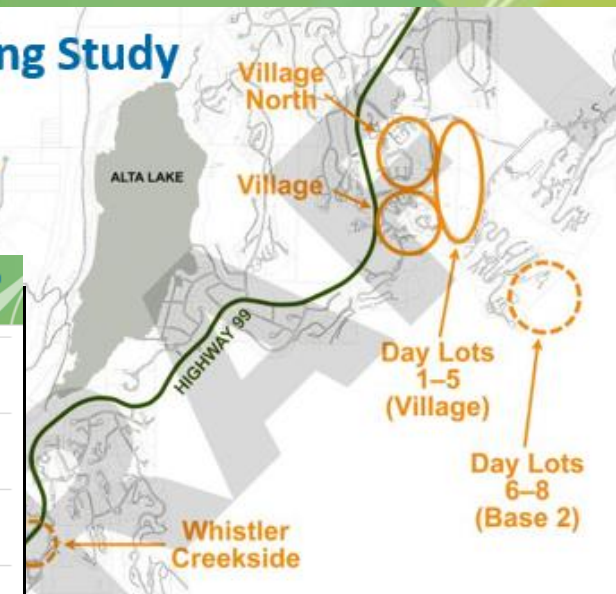
## Monthly AADT at Highway 99 and Brio



## Parking Study



— Winter + Summer  
- - - Winter Only



## 2016 Free Transit Pilot Project

- 1,600 – Average NEW rides per Saturday
- 52% increase

Number of Passengers by route & total

Route	1	2	6	7	Total
Before the Pilot Project	2,385	480	92	112	3,069
During the Pilot Project	3,654	671	156	196	4,677
% Increase	53%	40%	70%	75%	52%

## Resort Municipality of Whistler Sea to Sky Highway 99 Existing and Future Base Model

September 22, 2016

Transit Future Plan  
SEA TO SKY | 2015



## TRANSPORTATION STUDY

WHISTLER.COM | 1.800.WHISTLER



# TAG Vision & Goals

*Whistler's transportation system efficiently and affordably moves people and products to, from and within Whistler while delivering a high quality experience and minimizing impacts on natural areas.*

- **Improve customer experience**
- **Continue integrated / holistic approach**

## Current Reality



Traffic congestion



Visitor and resident complaints

Business success limited by congestion

More contribution to climate change



Whistler population in 1996

Approximately 7,000

Whistler population in 2016

Approximately 12,000

Whistler annual visitors in 1996

Approximately 1.7 million

Whistler annual visitors in 2016

Approximately 3 million



## This led to

10

community partner workshops

5,000

surveys responses

500

participants at public meetings

5

professional reports



## Let's Get Moving, Whistler

Over the past 20 years there have been investments in transportation but more investment is needed to address Whistler's current reality. The community transportation vision is to create an integrated transportation system that provides efficient and affordable options while minimizing environmental impact. Integrating parking and highway management, transit service, and active transportation actions addresses the current reality and reflects community support for action.

## Key Research Findings



Whistler has a parking availability problem, but there is enough capacity if existing spaces are better used

About half the traffic during peak times starts in Whistler



The majority of Whistler survey respondents are supportive of the 2017 Transportation Action Plan

Congestion will be best addressed by integrated transportation solutions



## 2017 Actions



### TRANSIT AVAILABILITY

- 1,750 more service hours and one more bus
- 10 free summer weekends with extra buses
- \$15 reduction in monthly pass
- Work with partners on Sea to Sky Regional Transit



### ACTIVE TRANSPORTATION

- More Village bike parking
- Improved Valley Trail signage and maps
- New tools for employers



### PARKING AND HIGHWAY AVAILABILITY

- Direct parking revenues to increase transit and cycling opportunities
- Expand app to share parking availability
- Increase visitor YVR shuttle amenities
- Lots 1 - 3: \$10/day, \$20/day oversize

During peak season:

- Lots 4 + 5: \$5/day, \$30/month Resident - Employee Pass



## Medium and Long Term Actions



### PARKING AND HIGHWAY AVAILABILITY

- Expand app to share parking availability
- Increase medians at hazard locations
- Promote alternatives to single occupant vehicle use



### TRANSIT AVAILABILITY

- 3 new buses + 6,500 new service hours
- Reduce cost for transit
- Provide more bus shelters
- Test bus queue-jumper lane on Highway



### ACTIVE TRANSPORTATION

- Increase gear storage in Village + Creekside
- Improve cycling safety
- Build more sidewalks
- Improve pedestrian highway crossings



## Anticipated Results



- Increased availability of parking
- Increased flexibility in travel options
- Reduced highway congestion
- Reduced contributions to climate change
- Less complaints
- More business success

All details can be found at  
[www.whistler.ca/MovingWhistler](http://www.whistler.ca/MovingWhistler)



Resort Municipality  
of Whistler





# 2017 Action Plan was Successful!

- Transit was well used
- Bike parking facilities were well used
- Local traffic on the highway was down
- Parking availability was improved

Average daily ridership	Summer 2016		Summer 2017	
	Pay	Free	Pay	Free
Saturday	3,070	4,680		5,390
Sunday	2,970			4,650
Holiday Mondays	2,060			3,930
Weekday	3,110		3,390	



	July 2016		July 2017	
Highway 99 Avg. Daily Traffic at:	Southbound	Northbound	Southbound	Northbound
Brio	12,967	12,918	13,065	13,155
Function	5,652	5,900	6,965	6,913
Difference – Local vehicle trips starting and ending in Whistler	7,315	7,018	6,100	6,242

## Summer 2017: Days When All Lots Full

Day	2016	2017
Friday	6	1
Saturday	9	4
Sunday	9	3
<b>Totals</b>	<b>24</b>	<b>8</b>



[Home](#) » [Services](#) » [Transportation](#) » [Enhancing Transportation](#)

## Enhancing Transportation in Whistler



### Traffic in Whistler

- › [TAG members and meetings](#)
- › [2017 Transportation Actions and initiatives](#)
- › [Community Energy and Climate Action Plan](#)
- › [Greenhouse gas emissions monitoring in Whistler](#)



### Community Presentations and Feedback

- › [Transportation reports and presentations](#)



### Parking Study Reports

- › [2017 Parking Study](#)
- › [2016 Parking Study](#)
- › [2016 Key Findings](#)
- › [Video presentation - Parking study presentation to Council December 20, 2016](#)



### Transit in the Sea to Sky Corridor

- › [Sea to Sky Corridor Regional Transit Study Update](#)
- › [The Sea to Sky Transit Future Plan \(BC Transit\)](#)
- › [Results from Phase 1 and 2 consultation](#)



### 2017-2019 Transit expansion plan

- › [July 4, 2017 Whistler Transit System TSA, AOA & Expansion MOU Presentation Slides](#)
- › [Whistler Transit System 2018/21 Approved Expansion Plan and Agreements](#)
- › [July 15, 2016 News Release](#)



### More transportation projects

- › [Compressed natural gas buses and fueling station](#)
- › [Gateway Loop Improvement Project](#)
- › [Wayfinding Project](#)
- › [Municipal Paving Project](#)



# TAG Action Plan Recommendations

## TAG Vision & Goals

Whistler's transportation system efficiently and affordably moves people and products to, from, and within Whistler while delivering a high quality experience and minimizing impacts on natural area.



**Highway 99  
Efficiencies**



**Transit  
Improvements**



**Better Parking  
Management**



**Active Transportation  
options**



**Others**



# 2018-2019 Proposed Transportation Actions



## Highway 99 Efficiencies



## Transit Improvements



## Better Parking Management



## Active Transportation Options



## Other

### 2018 spring/summer

Work with Ministry of Transportation on study to understand costs and impacts on natural areas, for highway capacity improvements from Function to Whistler Village.	Work with BC Transit to study the opportunities to improve and expand regional transit service from Pemberton/ Mt. Currie all the way to Metro Vancouver.	Monitor the winter 2017/2018 Parking Actions and review the results of the 2017 Improving Parking Availability Strategy.	Expand secure bicycle parking offerings in the Village and Upper Village, including secure overnight and event parking.	Explore peak time carpooling strategies to encourage more people to carpool to the ski hill.
Work with Sea to Sky municipalities, RCMP, to implement findings of Sea to Sky Highway Road Closure Protocol Assessment Report.	Work with Ministry of Transportation and BC Transit to develop transit queue jumper lanes as a pilot project in 2018.	Work with Tourism Whistler and Chamber to explore feasibility of expanding parking app that illustrates all available parking in Whistler.	Install Valley Trail lighting south of Blueberry.	Partner with Whistler businesses and organizations, to increase number and affordability of end of trip and storage facilities (e.g. bike & ski lockers) in Village and at Creekside.
	Provide safe trails from neighbourhoods to highway bus stops.	Develop and deliver parking inventory learning session inviting all public and private parking operators in Whistler.	Provide paved shoulders on Highway 99.	Build more neighbourhood ski-outs.
		Introduce multiple day parking passes (beginning summer 2018) and phase out monthly parking passes in 2019/2020.	Build sidewalks in Function Junction.	
		Encourage private lots and hotel owners to offer multi-day passes or carpool passes for their staff at their lots.		

### 2018 fall/winter

Study potential changes to Highway 99 at Britannia Beach to reduce or eliminate major highway congestion point.	Explore alternate revenue sources for funding improved transit services, including Transit contribution from other businesses or combination transit and activity pass.	Develop winter 2018/2019 carpool incentive program based on results of the 2017/2018 pilot program.	Develop and implement a marketing campaign including an incentive program to encourage people to leave their car at home.	
-----------------------------------------------------------------------------------------------------------------	-------------------------------------------------------------------------------------------------------------------------------------------------------------------------	-----------------------------------------------------------------------------------------------------	---------------------------------------------------------------------------------------------------------------------------	--

### 2019 spring/summer

Work with MOTI to continually improve Highway 99 traffic signals with state-of-the-art network signal systems.	Develop a strategy to further reduce transit rider fares year round. Consider free youth passes for students enrolled in Whistler schools full-time.		Repaint bike lanes on highway, including north of Whistler, as part of ongoing maintenance and safety improvement.	Work with Whistler Blackcomb/Vail to develop and offer a "Whistler Card" to guests as a combo pass (including transportation to and from Whistler), to experience and get around the resort.
	Provide basic bus shelters at all highway bus stops.			

### 2019 fall/winter

	Start planning for free transit year-round.		Assess feasibility and RMOW actions needed for private sector to provide electric bike and other share services	Build permanent Village end-of-trip facility or reinstate existing one at Library (for active transportation and transit users).
--	---------------------------------------------	--	-----------------------------------------------------------------------------------------------------------------	----------------------------------------------------------------------------------------------------------------------------------

# 2018 Spring/Summer Recommendations



- **Highway 99 Efficiencies**
  - ✓ Complete RMOW - Highway 99 Capacity Review Function to Whistler Village
  - ✓ Implement findings from Accident investigation
  - ✓ Improve Highway 99 Maintenance – Winter & Summer
- **Transit Improvements**
  - ✓ Improve Local Transit within Whistler (testing express service)
  - ✓ Plan for Regional Transit between Mt. Currie and Vancouver
  - ✓ Work with MoTI on transit queue jumper pilot project for 2018
  - ✓ Improve access to Highway Bus stops
  - ✓ Expand transit pass options (vendor locations and Spirit Transit Pass)
- **Better Parking Management**
  - ✓ Monitor winter parking actions
  - ✓ Deliver a Parking inventory learning session for all parking owners/operators
  - ✓ Explore a single Whistler-wide parking app for public and private lot availability
  - ✓ Introduce Multi-day Parking Passes
- **Active Transportation Options**
  - ✓ Expand secure bike parking offerings
  - ✓ Continue to improve Valley Trail linkages and lighting
  - ✓ Work with MoTI on improving cycling facilities on Highway 99
  - ✓ Expand communications on Action Plan
- **Other**
  - ✓ Explore Peak Time Carpool strategies to encourage more carpooling to ski hill
  - ✓ Investigate opportunities for secure bicycle parking for events
  - ✓ Communications to promote alternative parking locations



# 2018 Fall/Winter Recommendations



- **Highway 99 Efficiencies**
  - ✓ Study potential changes to Highway 99 at Britannia Beach
- **Transit Improvements**
  - ✓ Explore alternate revenue sources for funding improved transit services such as contribution from business, combo transit/activity pass
  - ✓ Implement real time bus tracker on all Whistler Transit system vehicles
- **Better Parking Management**
  - ✓ Develop Carpool incentive program based on results of 2017/2018 pilot program
- **Active Transportation Options**
  - ✓ Develop and implement a marketing campaign/incentive program to encourage people to leave their car at home

# 2019 Recommendations



- **Highway 99 Efficiencies**
  - ✓ Implement improvements to Highway 99 traffic signals
- **Transit Improvements**
  - ✓ Develop a strategy to further reduce transit rider fares
  - ✓ Explore mechanism to offer free youth passes for Whistler students
  - ✓ Provide basic bus shelters at all highway bus stops
  - ✓ Explore funding options to offer free transit year-round
- **Active Transportation Options**
  - ✓ Assess feasibility and RMOW actions needed for private sector to provide electric bike and other share services
- **Other Options**
  - ✓ Work with WB to developed and offer a “Whistler-card” to guests as a combo pass, packaging preferred transportation to/from/within resort
  - ✓ Build permanent Village end-of-trip facility

# Next Steps

- TAG to determine lead organizations for actions
  - ✓ Plan and confirm budget
  - ✓ Implement actions
- TAG continuing to work on
  - ✓ Review of OCP Transportation Vision and Policies
  - ✓ Recommend criteria for Community Transportation Initiative Funding
  - ✓ Review winter monitoring program and lessons learned
  - ✓ Long-term Actions Recommendation (fall 2018)



# Recommendation

- **That** Council receive the Transportation Advisory Group medium-term (2018-2019) Transportation Action Plan recommendations as attached as Appendix “A” to Administrative Report to Council No. 18-018; and
- **That** Council direct staff to work with Transportation Advisory Group members and partners to start implementing the 2018 actions as recommended in Administrative Report to Council 18-018.



**Questions?**