

OPERATIONAL FUEL
REDUCTION MANAGEMENT
PROGRAM

RAINBOW FUEL
MANAGEMENT
PRESCRIPTIONS

INFORMATION SHARING:
RAINBOW NEIGHBOURHOOD
LOCAL RESIDENT

Submitted by:

B.A. Blackwell and Associates Ltd.
270-18 Gostick Place,
North Vancouver, B.C. V7M 3G3
Tel: 604-986-8346

Submitted to:

Resident
Whistler, BC

November 27, 2018



**B.A. Blackwell
& Associates Ltd.**

B.A. BLACKWELL AND ASSOCIATES LTD.

270-18 Gostick Place, North Vancouver, B.C. V7M 3G3
Telephone: (604) 986 8346 Fax: (604) 986 8246
www.bablackwell.com

November 27, 2018

Dear resident(s),

B.A. Blackwell and Associates Ltd. seeks to share information with residents of the Rainbow neighbourhood regarding two Fuel Management Prescriptions that are currently under development and review in the Resort Municipality of Whistler (RMOW).

B.A. Blackwell and Associates Ltd. (Blackwell), established in 1988, provides integrated forestry consulting services to a wide range of clients in government and industry. In the spring of 2018, Blackwell was retained by the RMOW to provide consulting services for two fuel management projects, one of which is funded by the Union of BC Municipalities' Strategic Wildfire Prevention Initiative. The projects entail the development of fuel management prescriptions to guide future on-the-ground implementation of operational fuel reduction treatments.

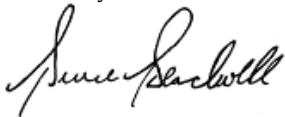
The prescriptions describe forest fuel management techniques that will be applied to several treatment areas. Techniques include thin from below, pruning, removal of surface fuels, local biomass utilization and chipping or burning to dispose of unusable biomass. The primary goals of this project are to reduce forest fuel loads identified in the area and enhance stand structure. Other objectives include increasing public safety; protecting critical infrastructure, facilities and existing recreational trails; and creating a shaded-fuel break

B.A. Blackwell requests information from interested and affected parties and stakeholders to assist in the identification of potential impacts to stakeholder interests requiring consideration and addressing during this phase in fuel management prescription development. The treatments are isolated to defined areas around the Rainbow development (see Map 1 below) and will undergo various levels of fuel reduction based on proximity to residential homes. **Due to the time-sensitive nature of the project, we respectfully request a response within 14 days of receiving this correspondence.** Further information sharing will take place with the public prior to implementation of these treatment operations.

Enclosed is a summary of the proposed fuel treatments, location of treatment area, potential treatment type(s), and a map.

Please contact us if you have any questions or require any further information.

Sincerely,



Bruce A. Blackwell, M.Sc., R.P. Bio, R.P.F.
B.A. Blackwell & Associates

Contents

1.0	INTRODUCTION	1
2.0	PROPOSED FUEL MANAGEMENT TREATMENTS.....	2
3.0	MAPS	3

1.0 Introduction

B.A. Blackwell and Associates Ltd. (Blackwell) are Canadian forestry consultants dedicated to providing high quality and professional forestry and environmental management services. Blackwell holds diverse experience in a range of forest management disciplines and is at the forefront of Canadian forestry and practices in British Columbia (BC). We have entered into a contract with the Resort Municipality of Whistler to write prescriptions for fuel reduction treatments in the wildland urban interface surrounding the Rainbow neighbourhood in Whistler.

The objective of fuel management prescriptions is to address the challenges associated with fuel hazards identified in the area of interest by Blackwell. Our goal for fuel treatments is to reduce both surface and crown fuel loads to reduce fire hazard and fire behaviour potential, consistent with higher-level goals and objectives for the area. The activities associated with this work will likely include:

- Understorey thinning and bucking of coniferous tree species,
- Overstorey thinning of coniferous trees and dead lodgepole pine to separate crowns and reduce future fuel loading,
- Pile burning or chipping to reduce surface fuel and dispose of debris,
- Utilization of available biomass – managed locally,
- Slashing of flammable understory vegetation, and
- Pruning of retained trees.

A visual example of pre- and post-treatment conditions from fuel treatment work is illustrated below.



Pre-treatment

Post-treatment

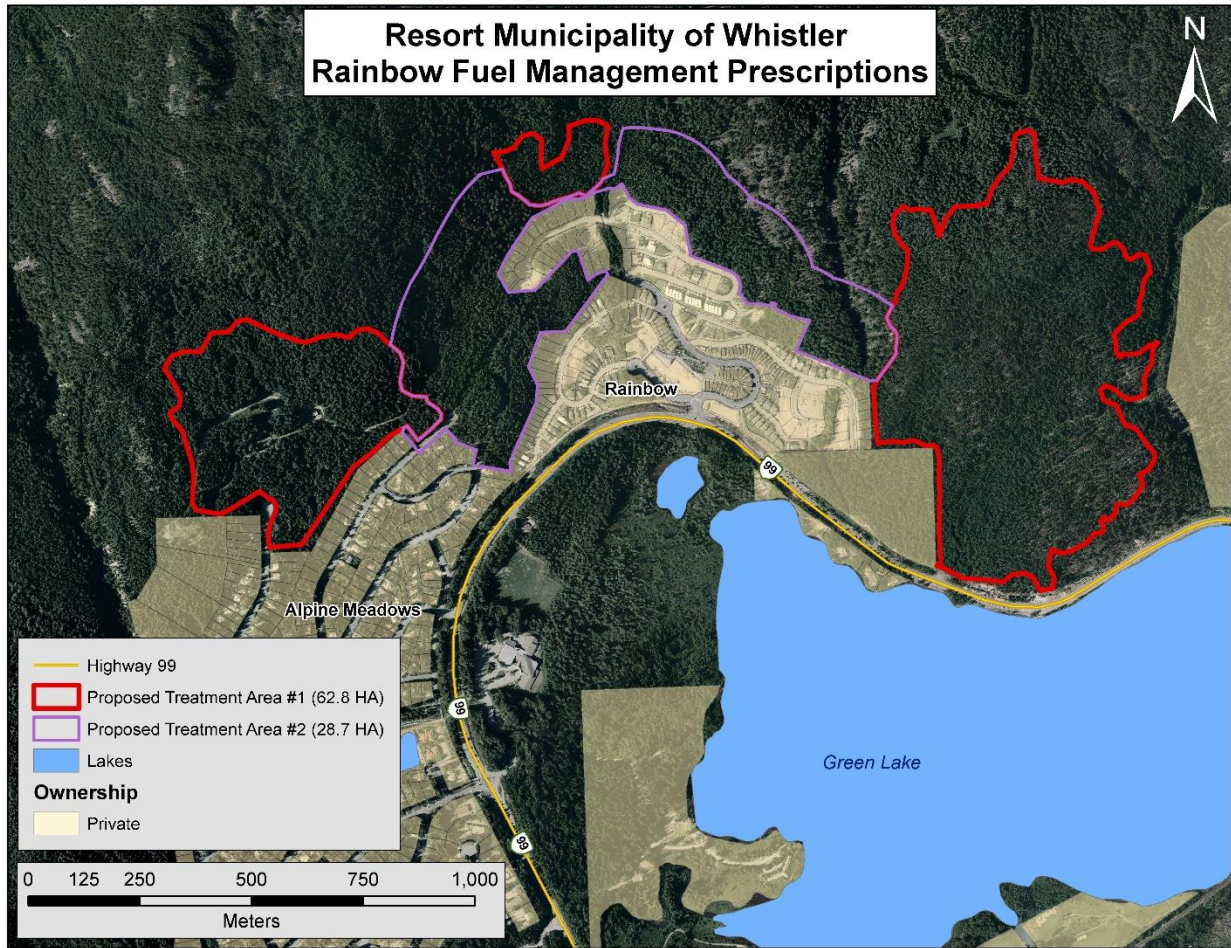
2.0 Proposed Fuel Management Treatments

Table 1 is a summary of proposed treatment areas and their associated treatment specifications. The attached map provides additional context for the location of proposed treatment areas, which are subject to change following the delineation of individual treatment units in the field. After final approval, the units decided upon within the Rainbow proposed treatment areas will be awarded to the Cheakamus Community Forest.

Table 1. Areas proposed for fuel management on Crown lands in the (see Map 1 for location of proposed treatment areas).

Unit	Land Jurisdiction	Proposed Treatment Specifications	Gross Treatment Area (ha)
Treatment Area #1	Crown Provincial	Thin from below (TFB), hazard tree removal (HTR), pruning (P), surface fuel removal (SFR) and pile/burn (PB) or chip (C).	62.8
Treatment Area #2	Crown Provincial/Crown Municipal	TFB, HTR, P, SFR, PB/C	28.7
Total area:			91.5

3.0 Map



Map 1. Designated area of interest identified for proposed fuel treatments on Crown lands in the Resort Municipality of Whistler (Gross area: 91.5 ha).