

The Resort Municipality of Whistler's 2023 Tax Toolkit

PROPERTY TAXES ARE DUE TUESDAY, JULY 4, 2023

Paying your property taxes can be conveniently done online through your Canadian bank account or on our website at my.whistler.ca using a credit card. See the back of your tax notice for payment options.

For information on how to claim your **Home Owner Grant** or apply for the **Property Tax Deferment program** visit the Province of BC's website at gov.bc.ca/homeownergrant and gov.bc.ca/propertytaxdeferment

We offer a convenient prepayment plan that allows you to pay next year's property taxes through monthly installments from your Canadian chequing account. Visit whistler.ca/preauthorizedpropertytaxes to learn more.

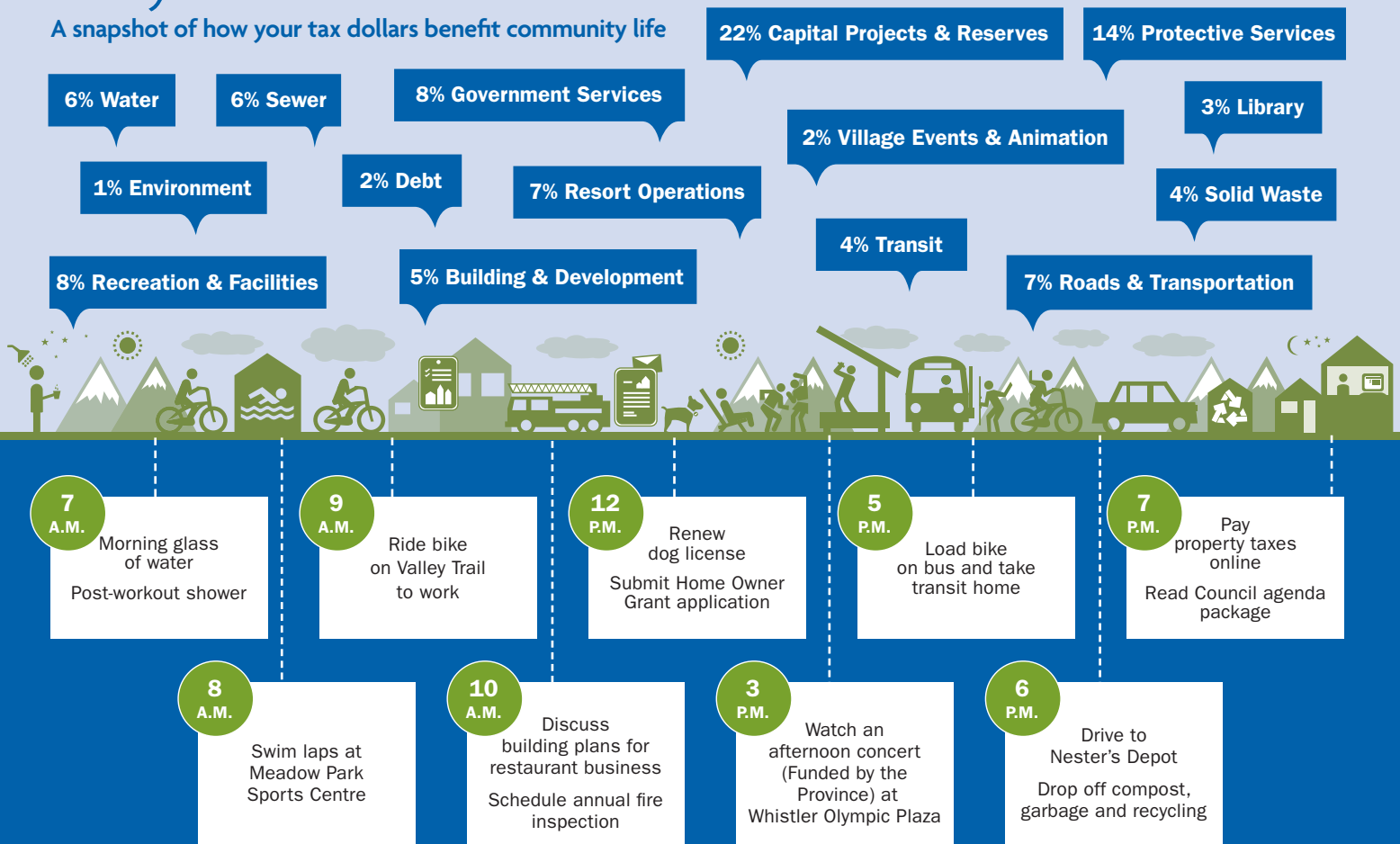
Welcome to MyWhistler

Review your property tax information online anytime. Visit my.whistler.ca to register for your MyWhistler account and access online services.

- ➔ Register to receive your **property tax and utility notice** by email
- ➔ Review previous years transactions
- ➔ Renew **business and dog licences**
- ➔ Pay for **building and planning permits**

A Day in the Life in Whistler

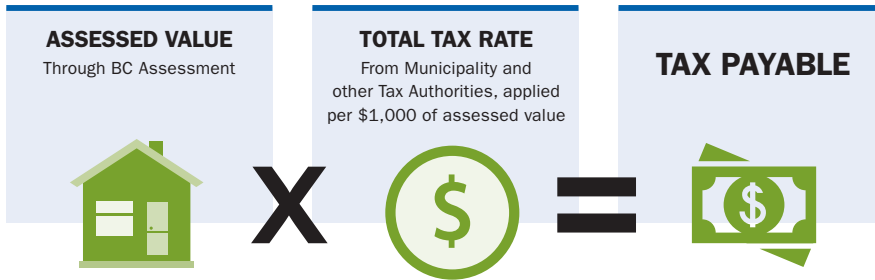
A snapshot of how your tax dollars benefit community life



Resort Municipality of Whistler
whistler.ca/propertytax



How are property taxes calculated?



Your tax payable also includes Parcel Taxes and Municipal User Fees to pay for water, sewer and solid waste services. Utility parcel taxes and user fees are charged as a flat rate per property.

Impact of assessed property values

Wondering why the change in your taxes differs from the Municipality's approved property tax increase?

If the increase in your property value is higher than the average increase in your property class (e.g. Residential Class), the taxes you owe may increase more than the average property tax increase that Council approved.

Similarly, if the increase in your assessed property value is lower than the average increase in your property class, the taxes you owe may increase less than the approved average property tax increase.

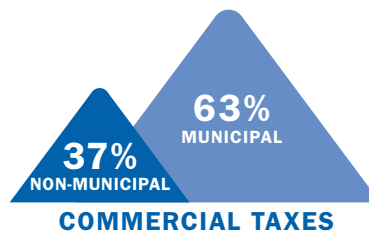
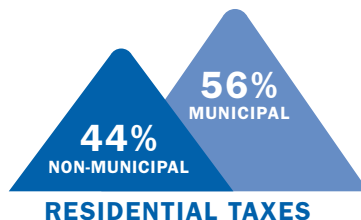


From 2022 to 2023, the average residential and commercial property assessment in Whistler increased by 13% and 28%, respectively.

Taxes for other Government Agencies

The RMOW collects "Other" taxes on behalf of the following government agencies:

- Province of BC School Tax
- Squamish Lillooet Regional District
- Sea to Sky Hospital District
- BC Assessment
- Municipal Finance Authority



Property Tax Questions?

If you have questions, don't delay! Contact us at your earliest convenience with your inquiries:

Resort Municipality of Whistler
Finance Department
finance@whistler.ca
604-935-8130
whistler.ca/propertytaxes

For information regarding non-municipal taxes, please contact:

Province of BC (School Tax)
1-888-355-2700 | gov.bc.ca/schooltax
BC Assessment
1-866-825-8322 | bcassessment.ca
Municipal Finance Authority
1-250-383-1181 | mfa.bc.ca

Connect with us!

Facebook RMOWhistler

Follow for the latest news, council updates, engagement opportunities, and events from the RMOW.

Instagram RMOWhistler

Enjoy highlights of the best from the RMOW and the community.

Twitter RMOWhistler

Get up-to-the-minute news and operational updates from the RMOW.

LinkedIn RMOWhistler

Learn about rewarding career opportunities at the RMOW.

Stay in-the-know about current and past engagement opportunities.

COUNCIL MEETINGS

View Council meeting agenda, minutes and videos at whistler.ca/Council. Agenda packages are available Friday mornings prior to the regularly scheduled Council meetings.

**Be informed. Stay safe.
Get the alerts.**

**WHISTLER
ALERT**

Whistler Alert is the official emergency notification system used by the Resort Municipality of Whistler to communicate with residents and visitors during emergencies.

Scan the QR Code with your phone to sign up today!



RESORT MUNICIPALITY OF WHISTLER

4325 Blackcomb Way
Whistler, BC Canada V8E 0X5
www.whistler.ca

TEL 604 932 5535
TF 1 866 932 5535
FAX 604 935 8109

