

# WHISTLER PURPLEAIR/BAM DECEMBER SUMMARY

Monitoring Period: December 1<sup>st</sup>- December 31<sup>st</sup> 2022

Location: Whistler, BC, Canada



Figure 1 - Monitoring Locations

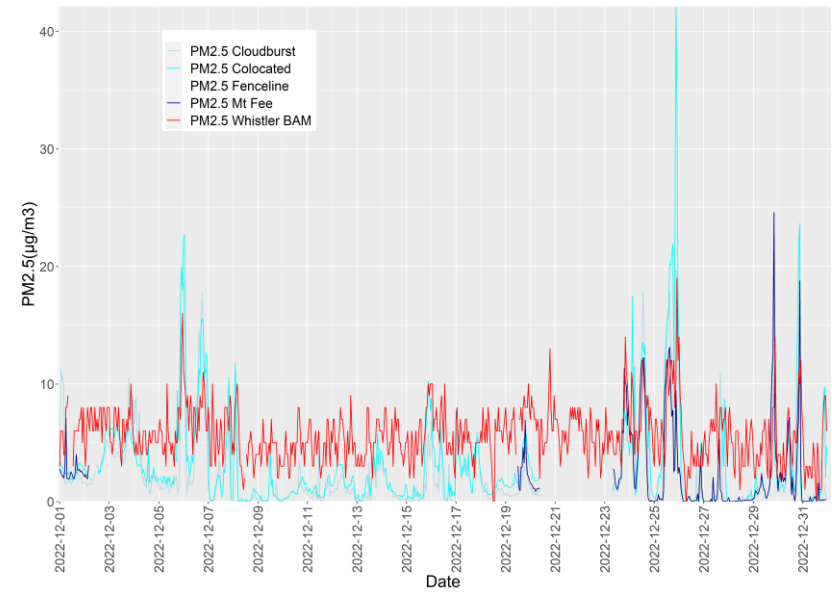


Figure 2 - PM<sub>2.5</sub> Time Series of Purple Air Monitors and Whistler BAM

\*Mt Fee Road PA was offline from 2022-12-02 05:00:00 to 2022-12-19 11:00:00

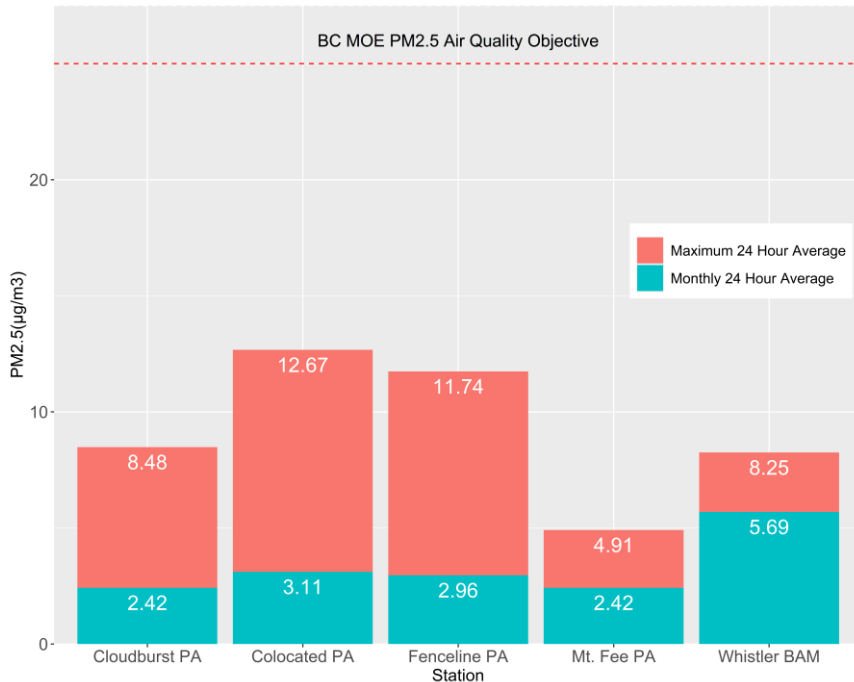


Figure 3 - Monthly Averages and Maximum 24-Hour Averages By Station

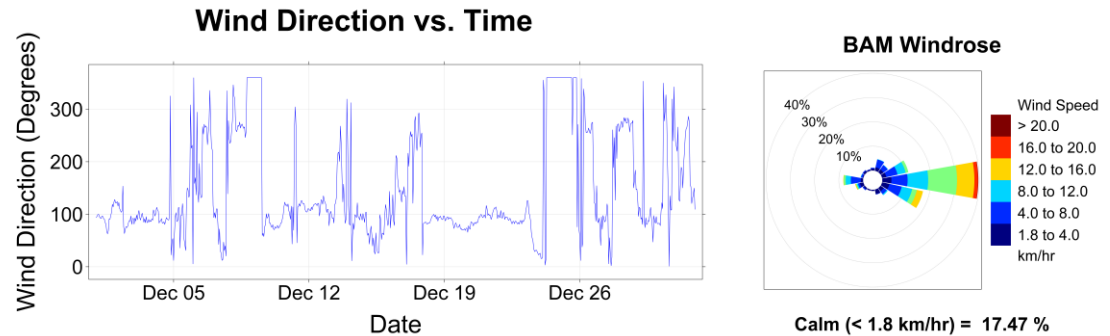


Figure 4 - Wind Direction vs. Time and BAM Windrose

## Discussion:

The air quality recorded at the Air Quality monitors for the month of December did not appear to be affected by any significant events. The Mt.Fee station was offline for a portion of the month due to equipment issues. The 24-hour maximums for the monitors were all below the BC MOE PM<sub>2.5</sub> Air Quality Objective as shown in Figure 3.