

# WHISTLER PURPLEAIR/BAM JANUARY SUMMARY

Monitoring Period: January 1st- January 31<sup>st</sup> 2023

Location: Whistler, BC, Canada



Figure 1 - Monitoring Locations

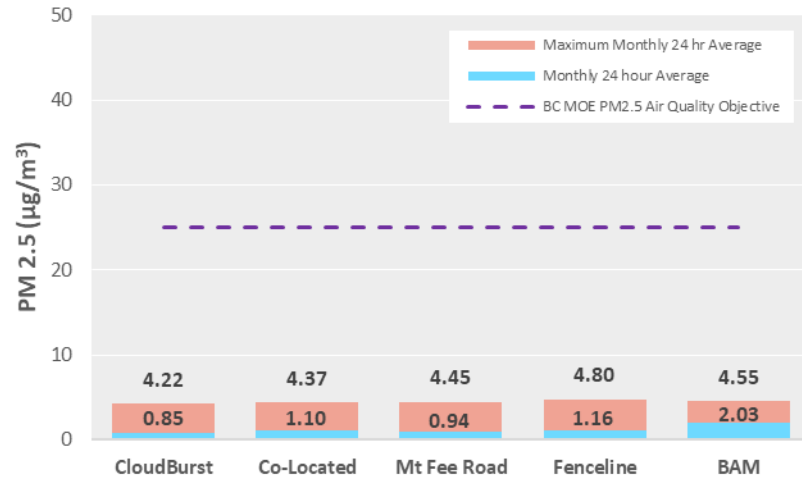


Figure 3 - Monthly Averages and Maximum 24 Hour Averages By Station

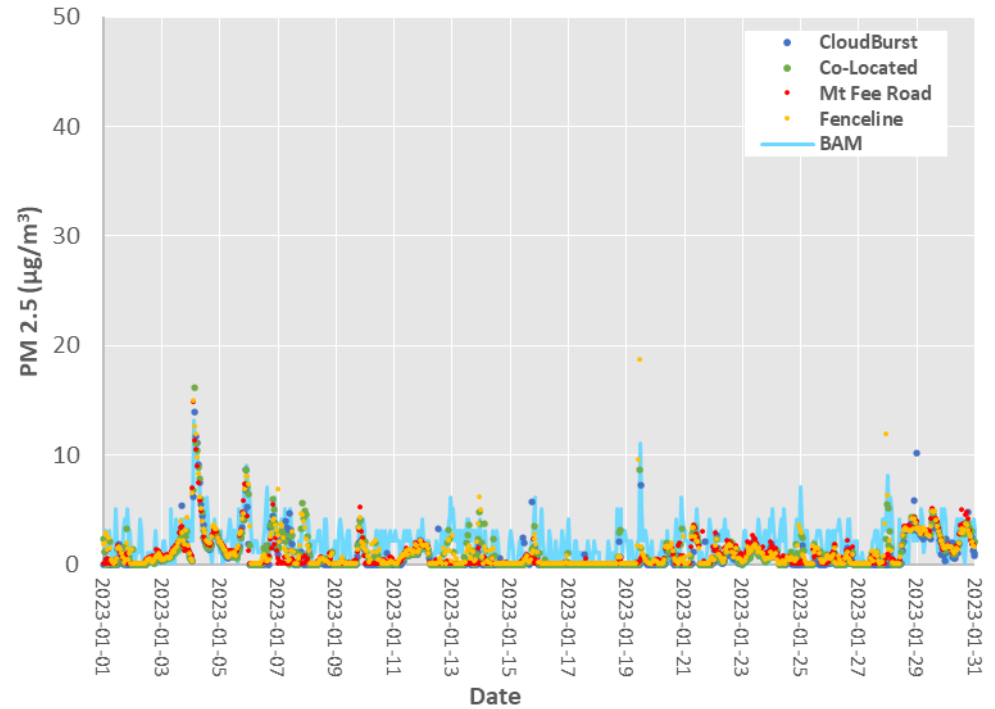


Figure 2 - PM<sub>2.5</sub> Time Series of Purple Air Monitors and Whistler BAM

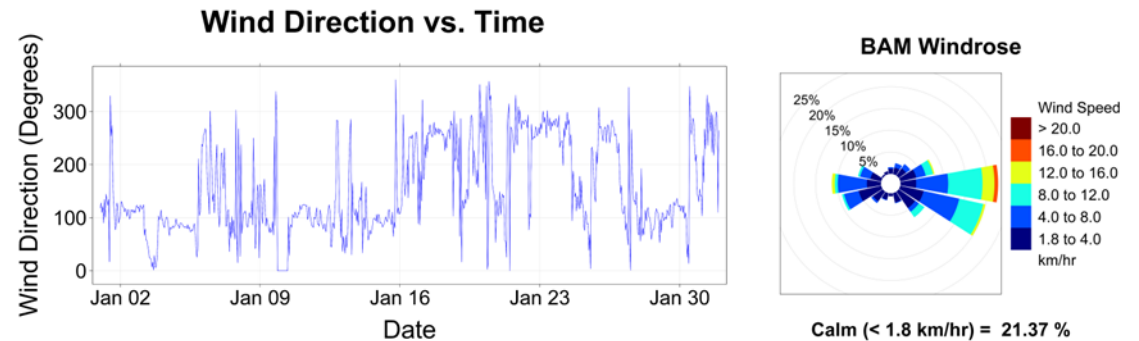


Figure 4 - Wind Direction vs. Time and BAM Windrose

**Discussion:** The air quality recorded at the Air Quality monitors for the month of January did not appear to be affected by any significant events. The 24-hour maximums for the monitors were all below the BC MOE PM<sub>2.5</sub> Air Quality Objective as shown in Figure 3.

Data from the PurpleAir monitors was corrected using Model 7, as suggested by Nilson et al. in the journal Atmospheric Measurement Techniques (<https://doi.org/10.5194/amt-2021-425>). Even with the correction factor, PurpleAir units typically under report PM<sub>2.5</sub> values below 10µg/m<sup>3</sup>. These values do not pose a health threat, as they are well below the BC MOE PM<sub>2.5</sub> Air Quality Objective.