

WHISTLER PURPLEAIR/BAM OCTOBER SUMMARY

Monitoring Period: October 1st- October 31st 2022

Location: Whistler, BC, Canada



Figure 1 - Monitoring Locations

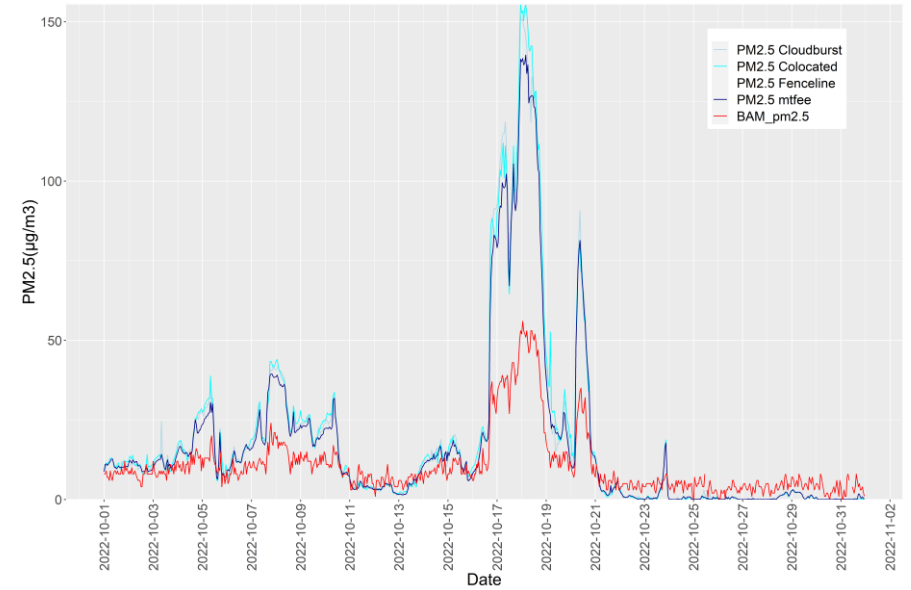


Figure 2 - PM_{2.5} Time Series of Purple Air Monitors and Whistler BAM

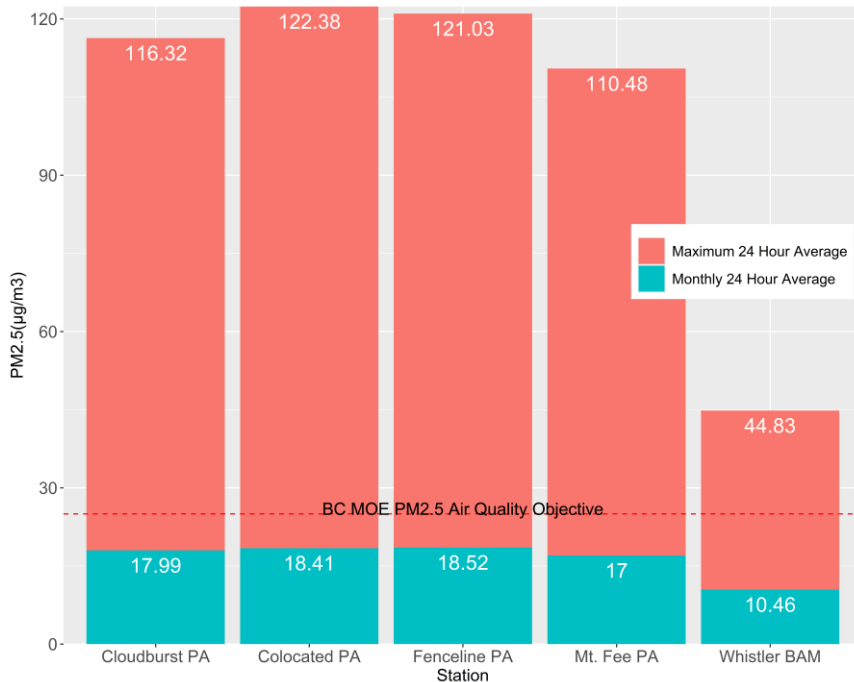
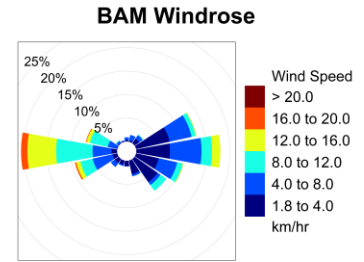
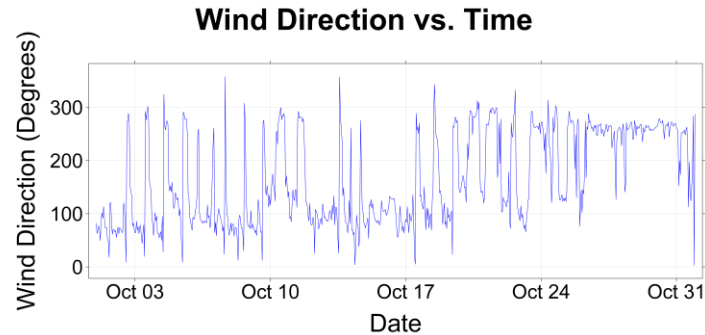


Figure 3 - Monthly Averages and Maximum 24 Hour Averages By Station



Calm (< 1.8 km/hr) = 10.22 %

Discussion:

There were multiple Air Quality Advisories issued by Metro Vancouver during October which ended by the 21st. The region was affected by this forest fire smoke which elevated the PM readings at all our monitors. The smoke in the region caused the 24-hour average to exceed the objective for the PurpleAir monitors on seven days (Oct. 7, 8, and 16 to 20) and two days (Oct. 17 and 18) for the BAM monitor. This was expected as at higher levels the PA units read higher than the BAM.