

WHISTLER PURPLEAIR/BAM SEPTEMBER SUMMARY

Monitoring Period: September 1st- September 30th 2022

Location: Whistler, BC, Canada



Figure 1 - Monitoring Locations

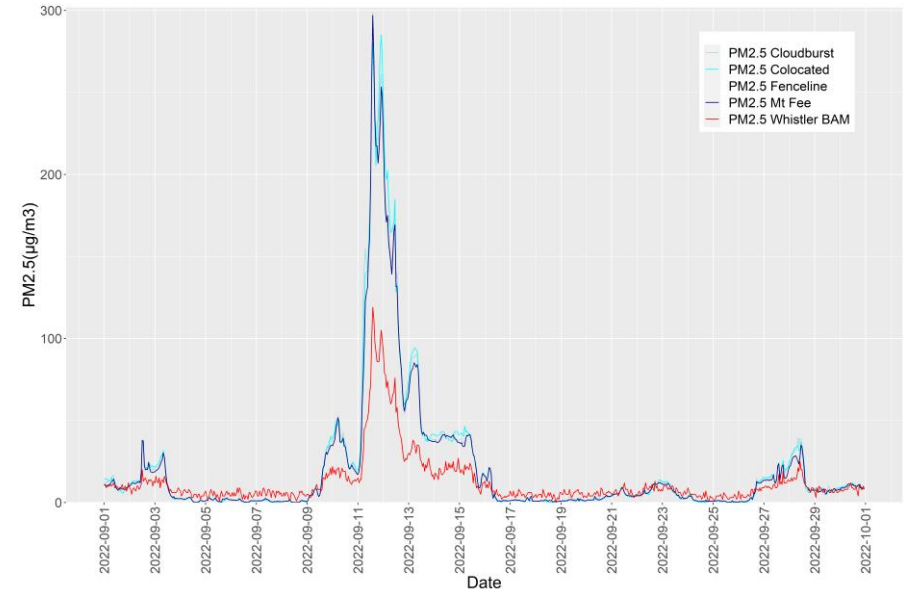


Figure 2 - PM_{2.5} Time Series of Purple Air Monitors and Whistler BAM

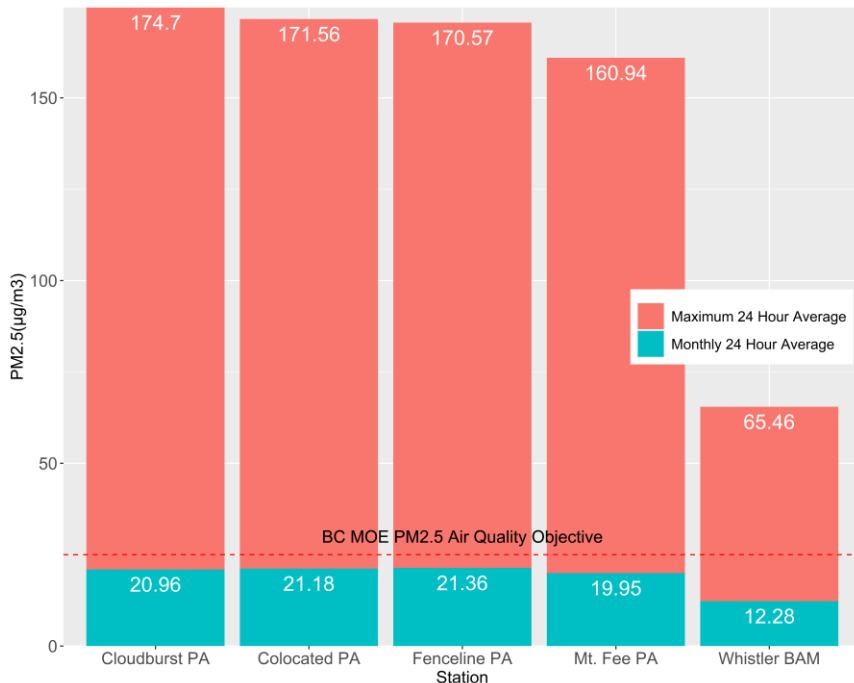


Figure 3 - Monthly Averages and Maximum 24 Hour Averages By Station

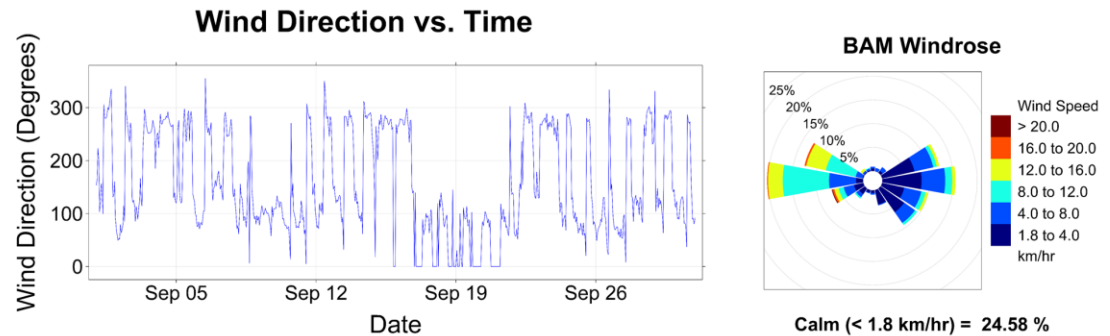


Figure 4 - Wind Direction vs. Time and BAM Windrose

Discussion:

There was an Air Quality Advisory issued by Metro Vancouver (Sept 10-15). The Whistler region was affected by this forest fire smoke which elevated the PM readings at all our monitors. The smoke in the region caused the 24-hour average to exceed the objective for the PurpleAir monitors on six days (Sept. 10-15) and three days (Sept. 11-13) for the BAM monitor. This was expected as at higher levels the PA units read higher than the BAM.