

# WHISTLER PURPLEAIR/BAM JUNE SUMMARY

Monitoring Period: June 1<sup>st</sup> – June 30<sup>th</sup> 2023

Location: Whistler, BC, Canada



Figure 1 - Monitoring Locations

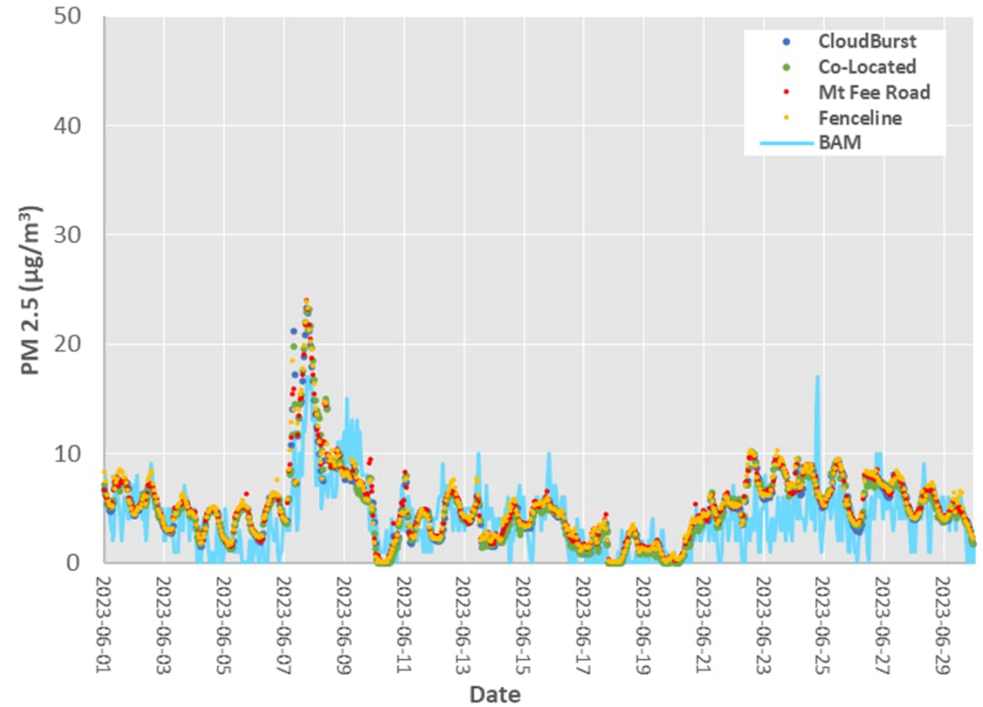


Figure 2 - PM<sub>2.5</sub> Time Series of Purple Air Monitors and Whistler BAM

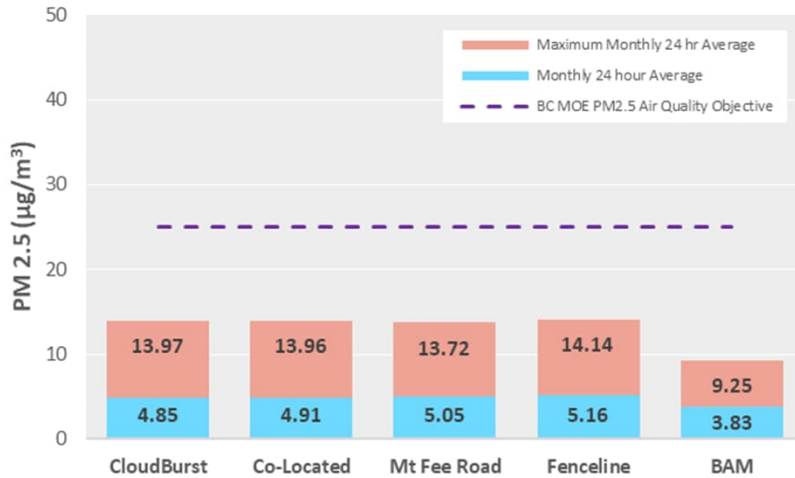


Figure 3 - Monthly Averages and Maximum 24-Hour Averages By Station

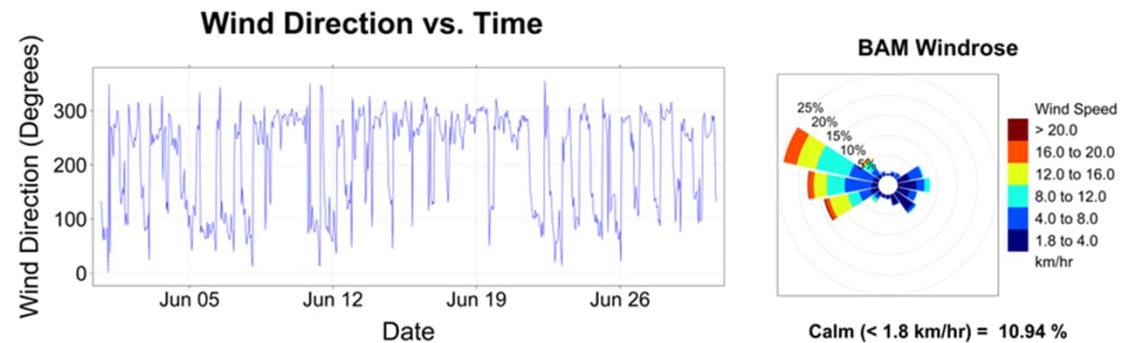


Figure 4 - Wind Direction vs. Time and BAM Windrose

**Discussion:** The 24-hour maximums for the monitors were all below the BC MOE PM<sub>2.5</sub> Air Quality Objective as shown in Figure 3.

In Figure 2, the peak in PM<sub>2.5</sub> concentrations during June 7 and June 8 coincides with an Air Quality Advisory issued by Metro Vancouver due to wildfire smoke. ([metrovancouver.org](https://www.metrovancouver.org))

Data from the PurpleAir monitors was corrected using Model 7, as suggested by Nilson et al. in the journal Atmospheric Measurement Techniques (<https://doi.org/10.5194/amt-2021-425>).