

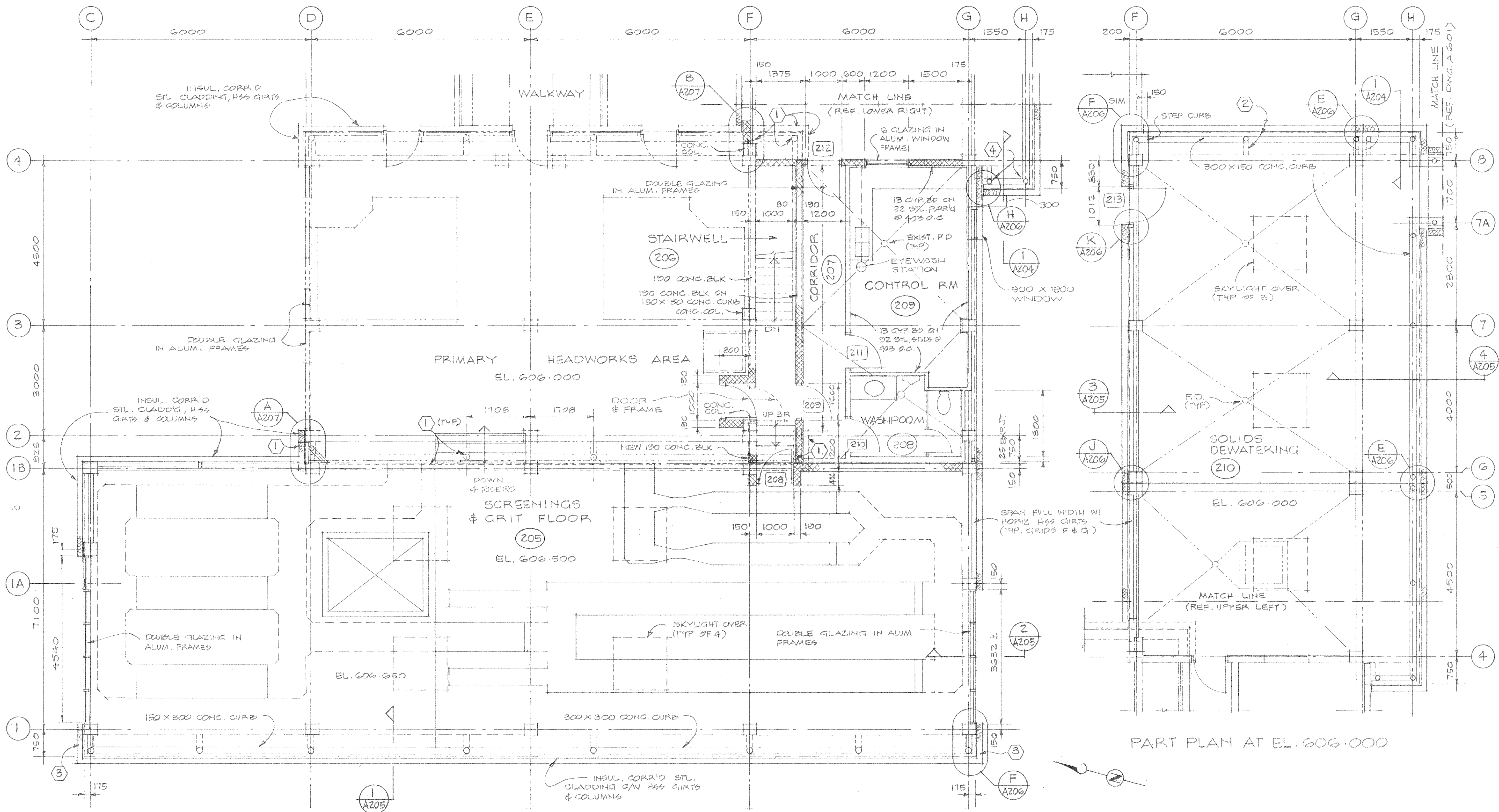
REVISIONS	ISSUE	DATE	DRN	CHD	APP'D	DESCRIPTION	ISSUE	DATE	DRN	CHD	APP'D	DESCRIPTION	DESIGNED	DRAWN	CHECKED	SCALE	DRAWING No.	SHEET	OF	ISSUE	PLANS @ EL. 601.000	
	B	APR/91	CU		tk	RECORD DRAWING							TRW/EIP	CO	Dkm	1:50	179.3.6	10	OF	82	B	A 101/201

DAYTON & KNIGHT LTD. CONSULTING ENGINEERS

RESORT MUNICIPALITY OF WHISTLER SEWAGE TREATMENT PLANT - STAGE IIA EXPANSION

- ① REMOVE EXIST. INSUL. CORR'D STL. CLADDING S/W HSS GIRTS & COLUMNS
- ② POSS. RELOCATED EXIST. INSUL. CORR'D STL. CLADDING, HSS GIRTS & COLUMNS
- ③ POSS. RELOCATED EXIST. INSUL. CORR'D STL. CLADDING
- ④ POSS. RELOCATED EXIST. HSS COLUMN(S)

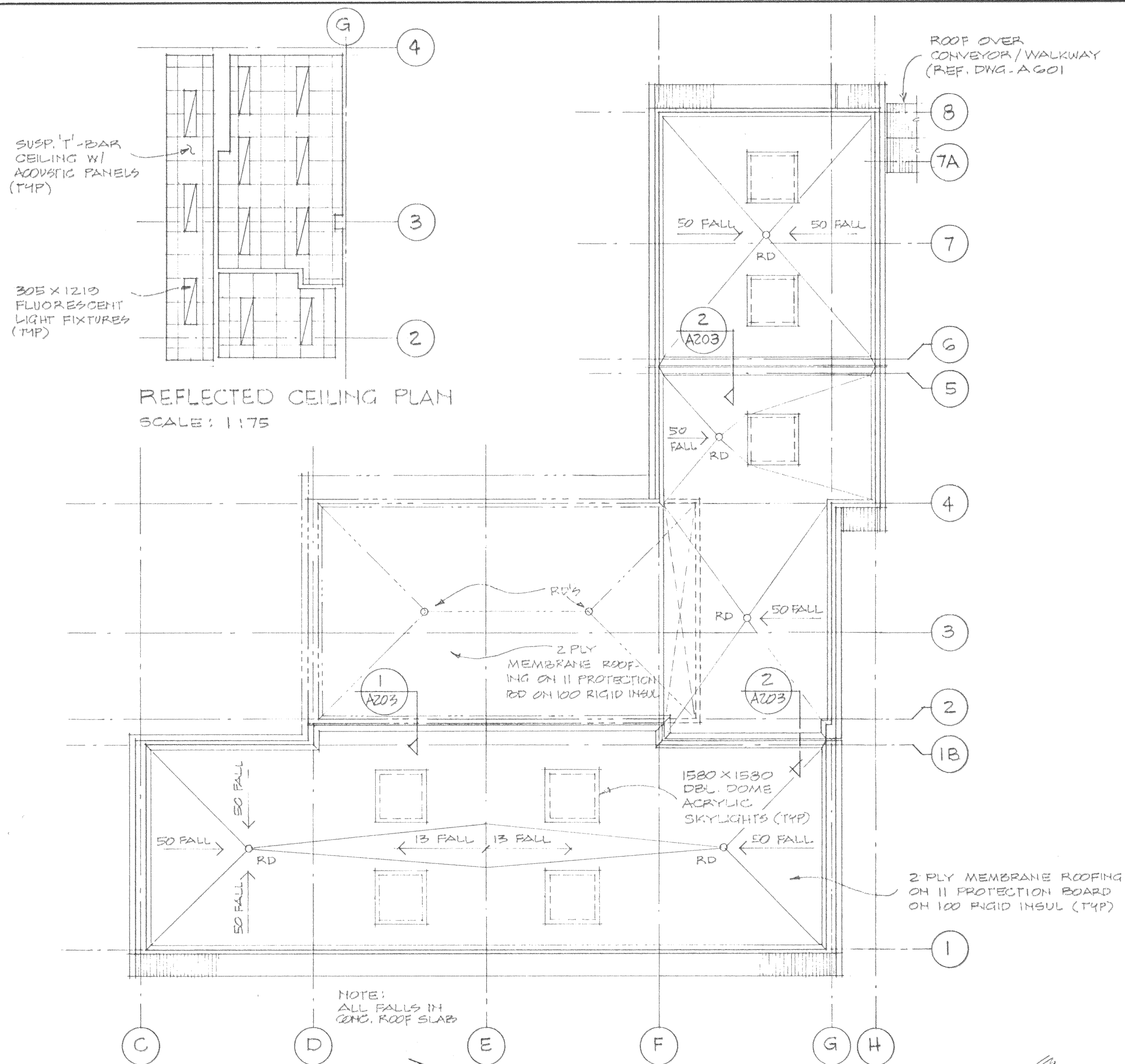
NOTE:
 CONTRACTORS OPTION TO REUSE, MODIFY & REUSE EXISTING CLADDING, INSULATION HSS GIRTS & COLUMNS. NO MIXING OF NEW & OLD EXTERIOR CORRUGATED FACE SHEETS WILL BE PERMITTED ON ANY SINGLE WALL FACE. MAKE GOOD EXIST. WHERE REQUIRED.



PART PLAN AT EL. 606.000, 606.500 & 606.650

PART PLAN AT EL. 606.000

ISSUE	DATE	DRN	CHD	APPD	DESCRIPTION	ISSUE	DATE	DRN	CHD	APPD	DESCRIPTION	DESIGNED	DAYTON & KNIGHT LTD.	RESORT MUNICIPALITY OF WHISTLER	SCALE: 1:50
B	MAR/91	JCH			RECORD DRAWING							TRB/SIP	CONSULTING ENGINEERS	SEWAGE TREATMENT PLANT - STAGE IIA EXPANSION	1:50
												CO		PLANS @ EL. 606.000 & 606.500	11 OF 82
												DKW			ISSUE B



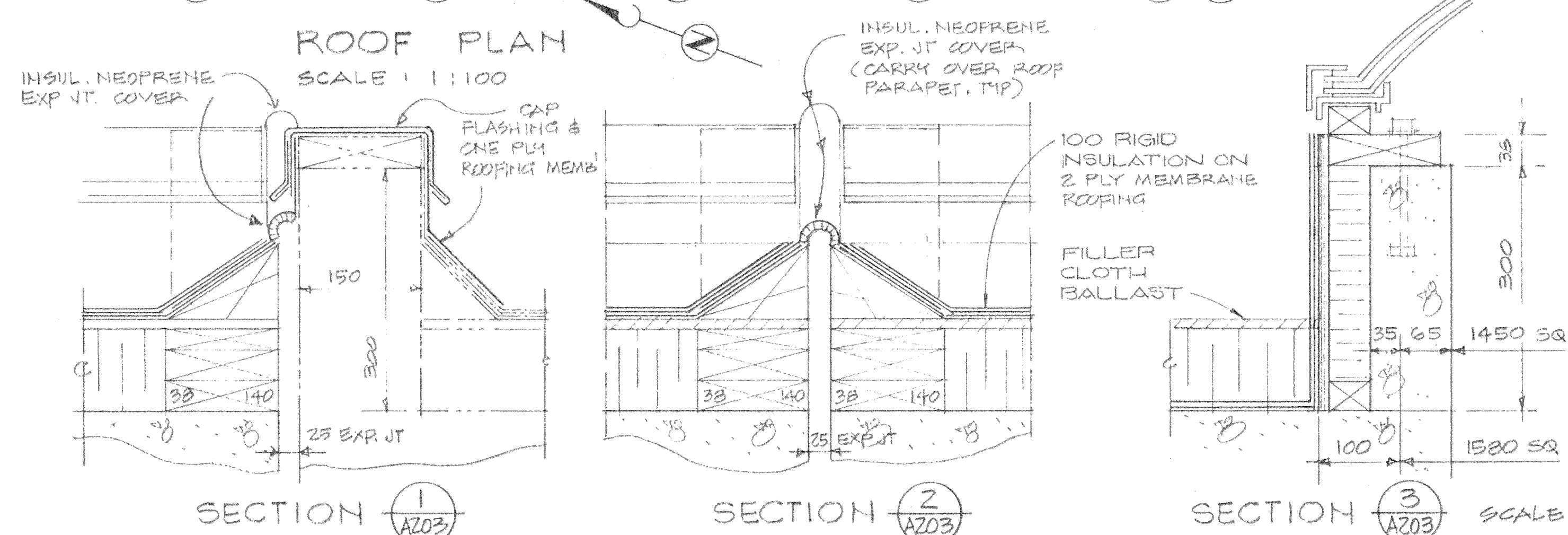
REFLECTED CEILING PLAN
SCALE: 1:75

ROOM FINISH SCHEDULE

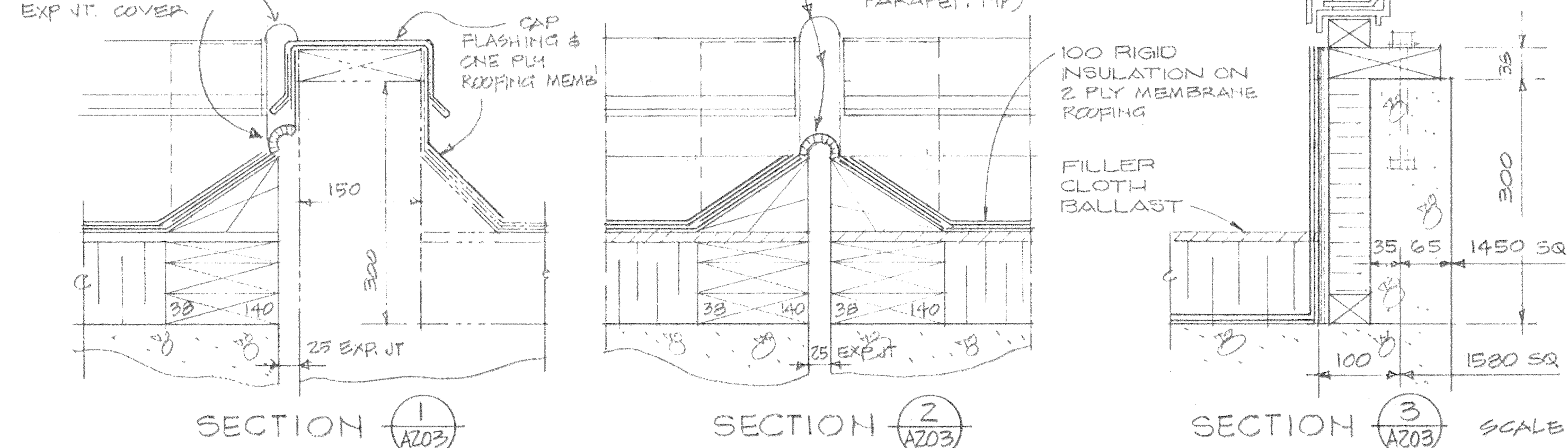
NUMBER	ROOM	FLOOR	BASE	DADO	WALL		CEILING			REMARKS
					MATERIAL	PAINT	TYPE	MATERIAL	PAINT	
201	COMPRESSOR RM.	CONCRETE	NIL	NIL	CONCRETE	YES	SLAB	CONCRETE	YES	
202	SCREENINGS LOADING ROOM	CONCRETE	NIL	NIL	CONCRETE	YES	SLAB	CONCRETE	YES	
203	STORAGE RM	CONCRETE	NIL	NIL	CONCRETE	YES	SLAB	CONCRETE	YES	
204	CORRIDOR	CONCRETE	CONC.	NIL	CONCRETE	YES	SLAB	CONCRETE	YES	4800
205	SCREENINGS # GRIT FLOOR	CONCRETE	CONC.	NIL	CONC. & C. BLK STL. CLADD'G *	YES	SLAB & BM'S	CONCRETE	YES	3800 * FINISH PAINT ALL EXPOSED SURFACES OF ALL STL. MEMBERS
206	STAIRWELL	CONCRETE	CONC.	NIL	CONC. BLK	YES	SLAB & BM'S	CONCRETE	YES	4300
207	CORRIDOR	VINYL TILE	RUBBER	NIL	CONC. BLK GYPSUM BD	YES	SUSPENDED	AC. PANELS	NO	2743
208	WASHROOM	VINYL TILE	RUBBER	NIL	GYPSUM BD	YES	SUSPENDED	AC. PANELS	NO	2743
209	CONTROL RM	VINYL TILE	RUBBER	NIL	GYPSUM BD	YES	SUSPENDED	AC. PANELS	NO	2743
210	SOLIDS DEWATERING	CONCRETE	CONC.	NIL	CONC. & C. BLK STL. CLADD'G *	YES	SLAB & BM'S	CONCRETE	YES	4300 * FINISH PAINT ALL EXPOSED SURFACES OF ALL STL. MEMBERS
501	SLUDGE CONTROL RM	CONCRETE	NIL	NIL	ACRYLIC STUCCO	NO	SLAB	CONCRETE	YES	
502	STAIRWELL PENTHOUSE	CONCRETE	CONC.	NIL	STEEL CLADDING *	NO	CORRUGATED	STEEL * CLADDING	NO	VARIABLES * FINISH PAINT ALL EXPOSED SURFACES OF ALL STL. MEMBERS
503	CONVEYOR/WALKWAY	CONCRETE	CONC.	NIL	STEEL CLADDING *	NO	CORRUGATED	STEEL * CLADDING	NO	VARIABLES * FINISH PAINT ALL EXPOSED SURFACES OF ALL STL. MEMBERS
504	STAIRWELL	CONCRETE	CONC.	NIL	STEEL CLADDING *	NO	CORRUGATED	STEEL * CLADDING	NO	VARIABLES * FINISH PAINT ALL EXPOSED SURFACES OF ALL STL. MEMBERS

DOOR SCHEDULE

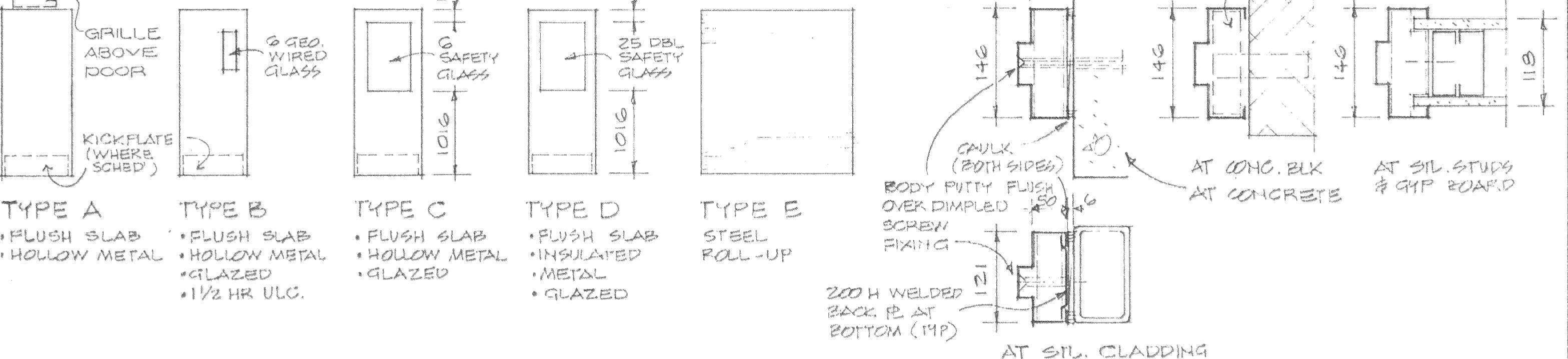
NUMBER	LOC'N	TYPE	WIDTH	HEIGHT	THICK	MAT'L	GLASS	THRESH	FRAME	DOOR HAND	HARDWARE										REMARKS			
											LOCKSET	BUTTS	CLOSER	LATCHET	PUSH PL	PULL PL	FLUSH ST	HOLDER	STOP	KICK PL		BEAD BLOCK		
201	201	D	1800	2150	45	STEEL	25 DBL SAFETY	ALUM	STEEL	LHR RHR *	0	0	0											* ACTIVE LEAF
202	202	E	3500	3700	-	STEEL	-	STEEL	NIL	ROLL-UP														* ALL HWWR BY DOOR MFR.
203	202	D	900	2150	45	STEEL	25 DBL SAFETY	ALUM	STEEL	RHR	0	0	0											* ACTIVE LEAF
204	203	D	2288	2150	45	STEEL	25 DBL SAFETY	ALUM	STEEL	LHR RHR *	0	0	0											* ACTIVE LEAF
205	203	D	900	2150	45	STEEL	25 DBL SAFETY	ALUM	STEEL	LHR	0	0	0											
206	204	D	900	2150	45	STEEL	25 DBL SAFETY	ALUM	STEEL	LHR	0	0	0											
207	204	D	900	2150	45	STEEL	25 DBL SAFETY	ALUM	STEEL	LHR	0	0	0											
208	205	B	900	2150	45	STEEL	6 MM GEO. WIRE	NIL	STEEL	LHR	0	0	0											
209	207	B	900	2150	45	STEEL	6 MM GEO. WIRE	NIL	STEEL	RH	0	0	0											
210	208	A	900	2150	45	STEEL	-	NIL	STEEL	LH	0	0	0											
211	209	C	900	2150	45	STEEL	6 MM SAFETY	NIL	STEEL	RH	0	0	0											
212	210	C	900	2150	45	STEEL	6 MM SAFETY	NIL	STEEL	RHR	0	0	0											
213	210	D	900	2150	45	STEEL	25 DBL SAFETY	ALUM	STEEL	LH	0	0	0											
501	501	D	1700	2250	45	STEEL	25 DBL SAFETY	ALUM	STEEL	LHR RHR *	0	0	0											* ACTIVE LEAF
502	501	D	1700	2250	45	STEEL	25 DBL SAFETY	ALUM	STEEL	LHR RHR *	0	0	0											* ACTIVE LEAF
503	502	D	900	2050	45	STEEL	25 DBL SAFETY	ALUM	STEEL	RH	0	0	0											
504	504	D	800	2150	45	STEEL	25 DBL SAFETY	NIL	STEEL	LHR	0	0	0											* CL2 STORE - EXIST'G CONTROL BLDG - REF A503
101	*	D	900	2150	45	STEEL	25 DBL SAFETY	ALUM	STEEL	RH	0	0	0											

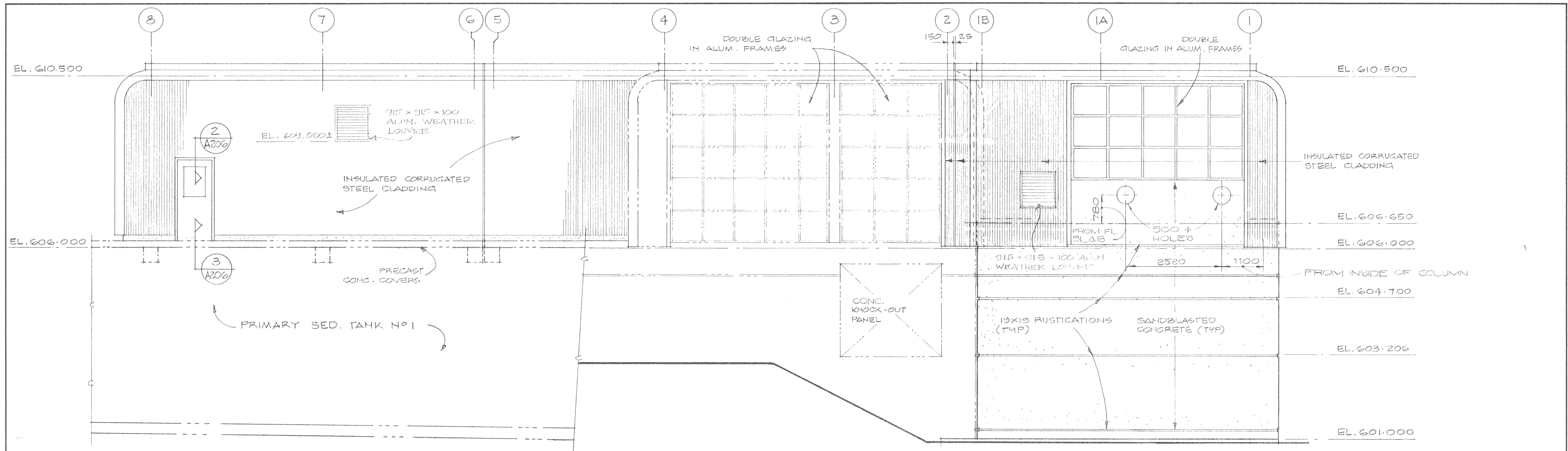


ROOF PLAN
SCALE: 1:100

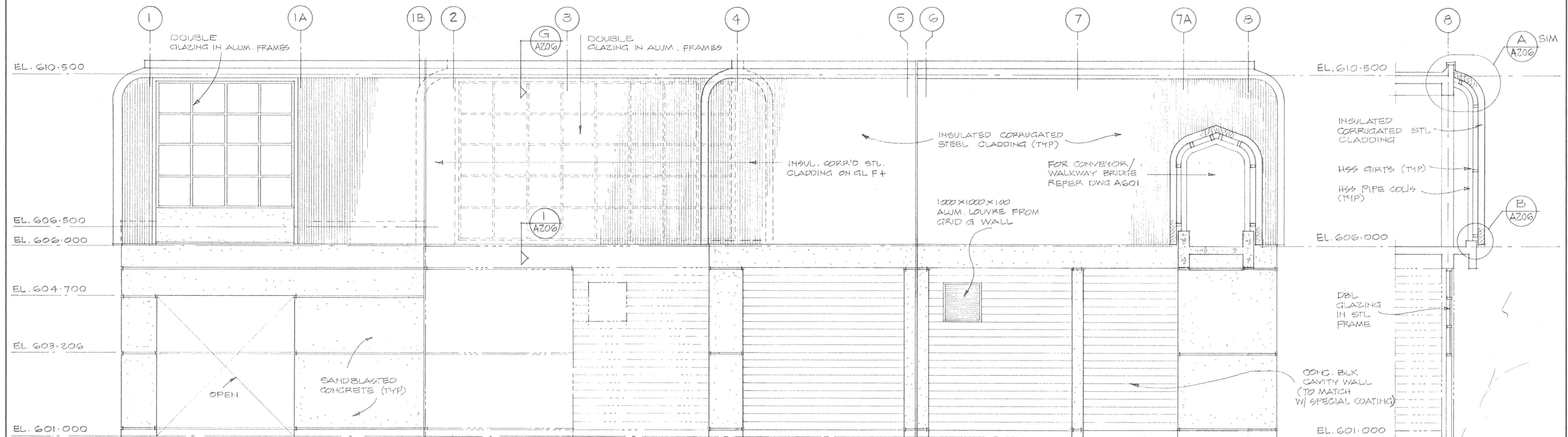


DOOR & FRAME TYPES





NORTH ELEVATION



SOUTH ELEVATION

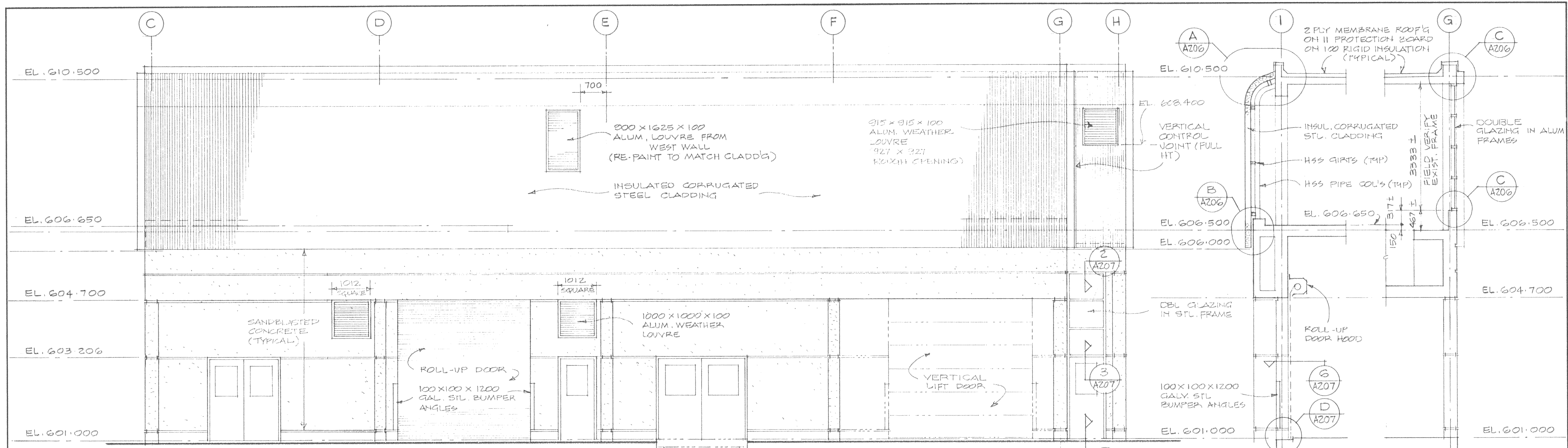
SECTION 1 A201 A202

ISSUE	DATE	DRN	CHD	APPD	DESCRIPTION	ISSUE	DATE	DRN	CHD	APPD	DESCRIPTION	DESIGNED	DRAWN	CHECKED	SCALE	DRAWING No.	SHEET	OF	ISSUE	NO.	
13	APR/91	JCHU		BA	RECORD DRAWING							TRG & P	CO	DKW	1:50	179.3.6	13	OF	32	ISSUE	3

DAYTON & KNIGHT LTD.
CONSULTING ENGINEERS

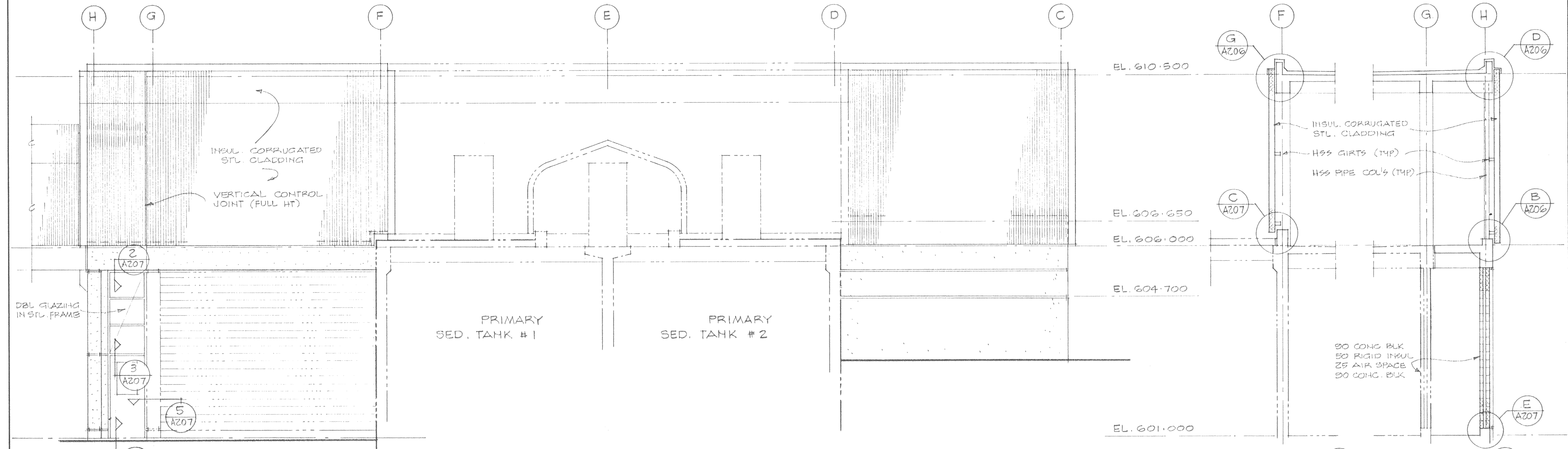
RESORT MUNICIPALITY OF WHISTLER
SEWAGE TREATMENT PLANT - STAGE IIA EXPANSION
NORTH ELEVATION - SOUTH ELEVATION

SCALE: 1:50
DRAWING No. 179.3.6
SHEET 13 OF 32 ISSUE 3



WEST ELEVATION

SECTION 1 SECTION 2



EAST ELEVATION

SECTION 3 SECTION 4

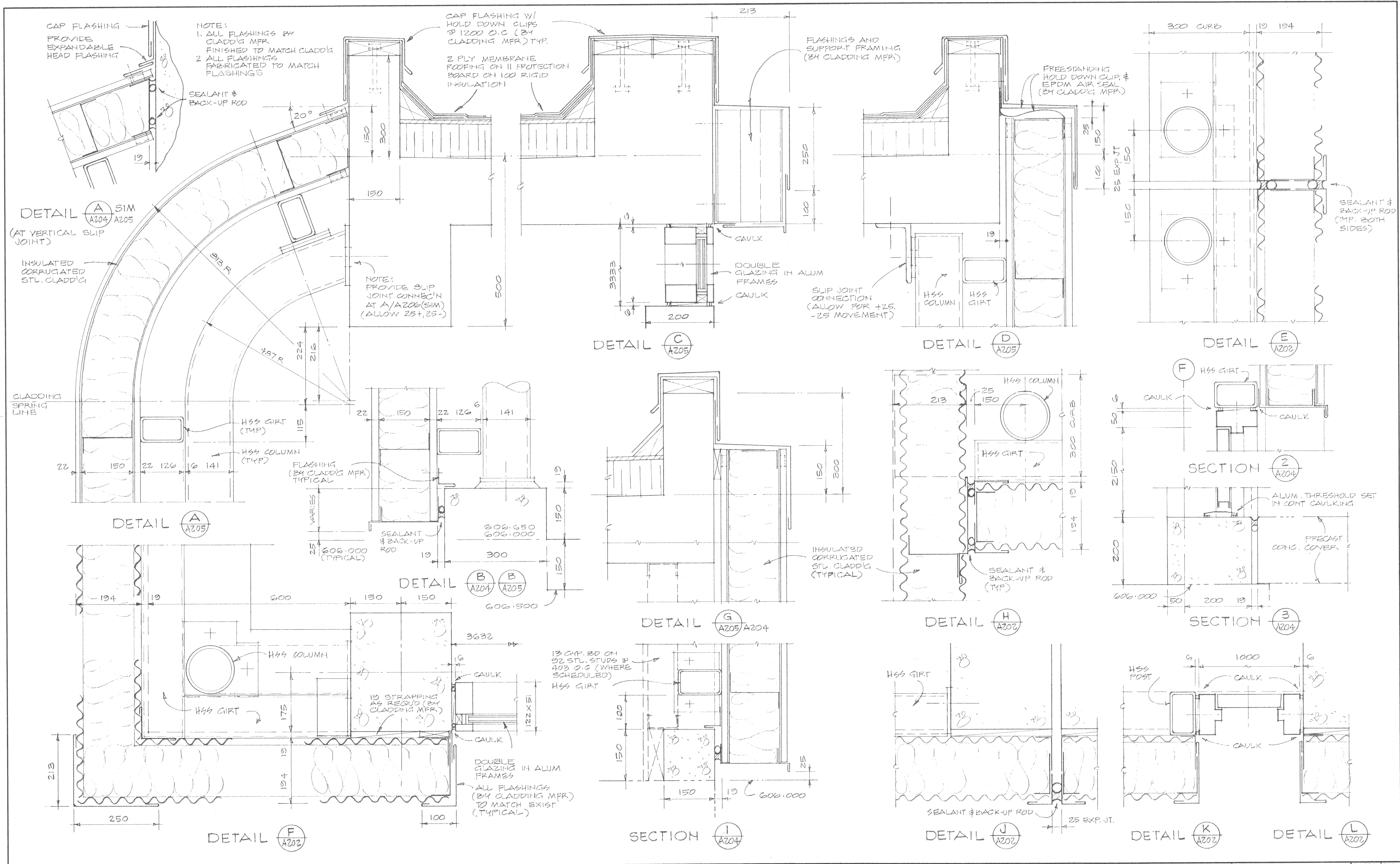
ISSUE	DATE	DRN	CHD	APPD	DESCRIPTION	ISSUE	DATE	DRN	CHD	APPD	DESCRIPTION
1	APR/91	JCH		DA	RECORD DRAWING						

DESIGNED: JRO/AP
 DRAWN: CO
 CHECKED: DKW

DAYTON & KNIGHT LTD.
 CONSULTING ENGINEERS
24 Aug 89

RESORT MUNICIPALITY OF WHISTLER
 SEWAGE TREATMENT PLANT - STAGE IIA EXPANSION
 WEST ELEVATION - EAST ELEVATION

SCALE: 1:50
 DRAWING No. 179.3.6
 SHEET 14 OF 32 ISSUE B
 A 105/205



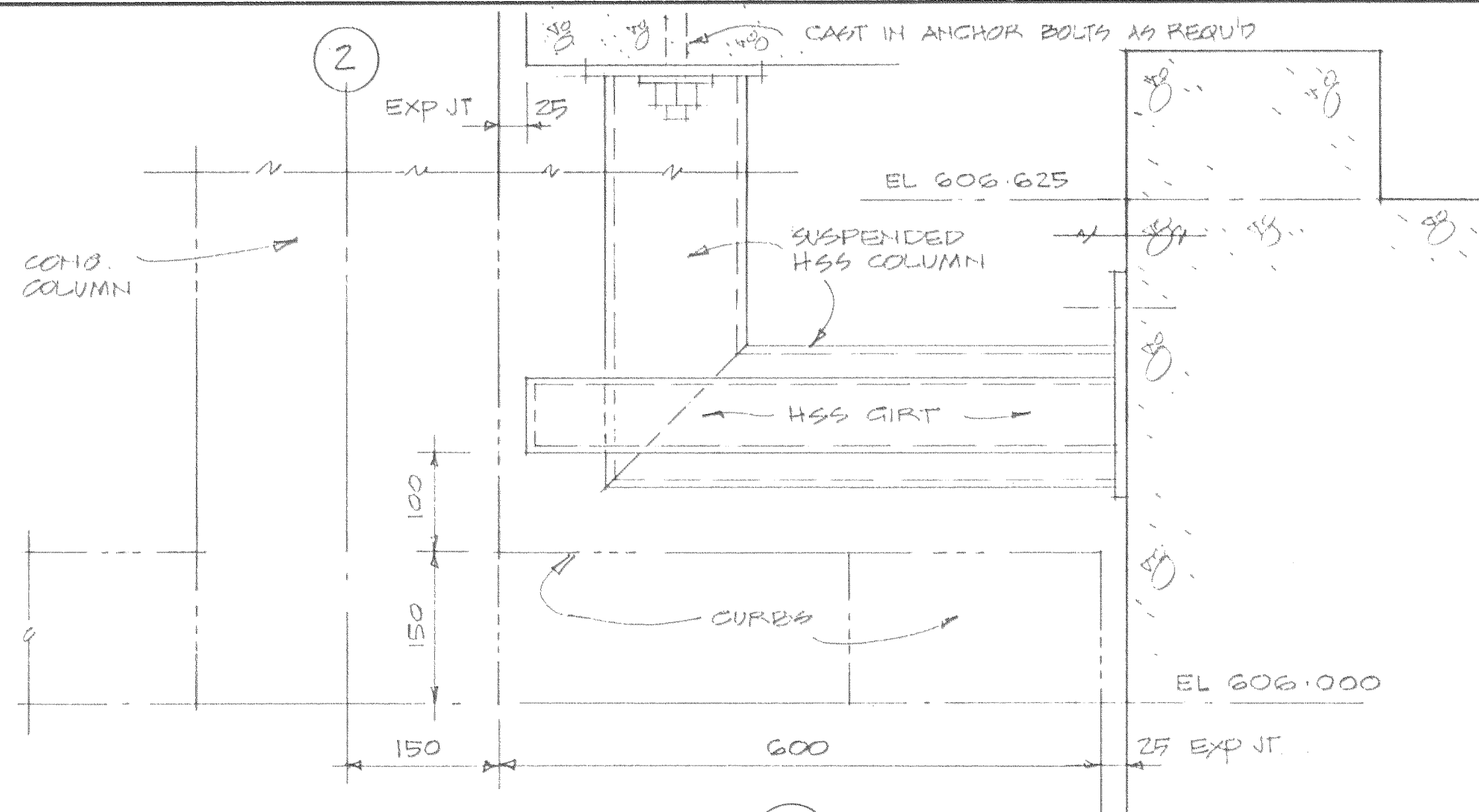
ISSUE	DATE	DRN	CHD	APPD	DESCRIPTION
B	APR/91	JCH			RECORD DRAWING

DESIGNED: TRB/SIP
 DRAWN: CO
 CHECKED: D/MW

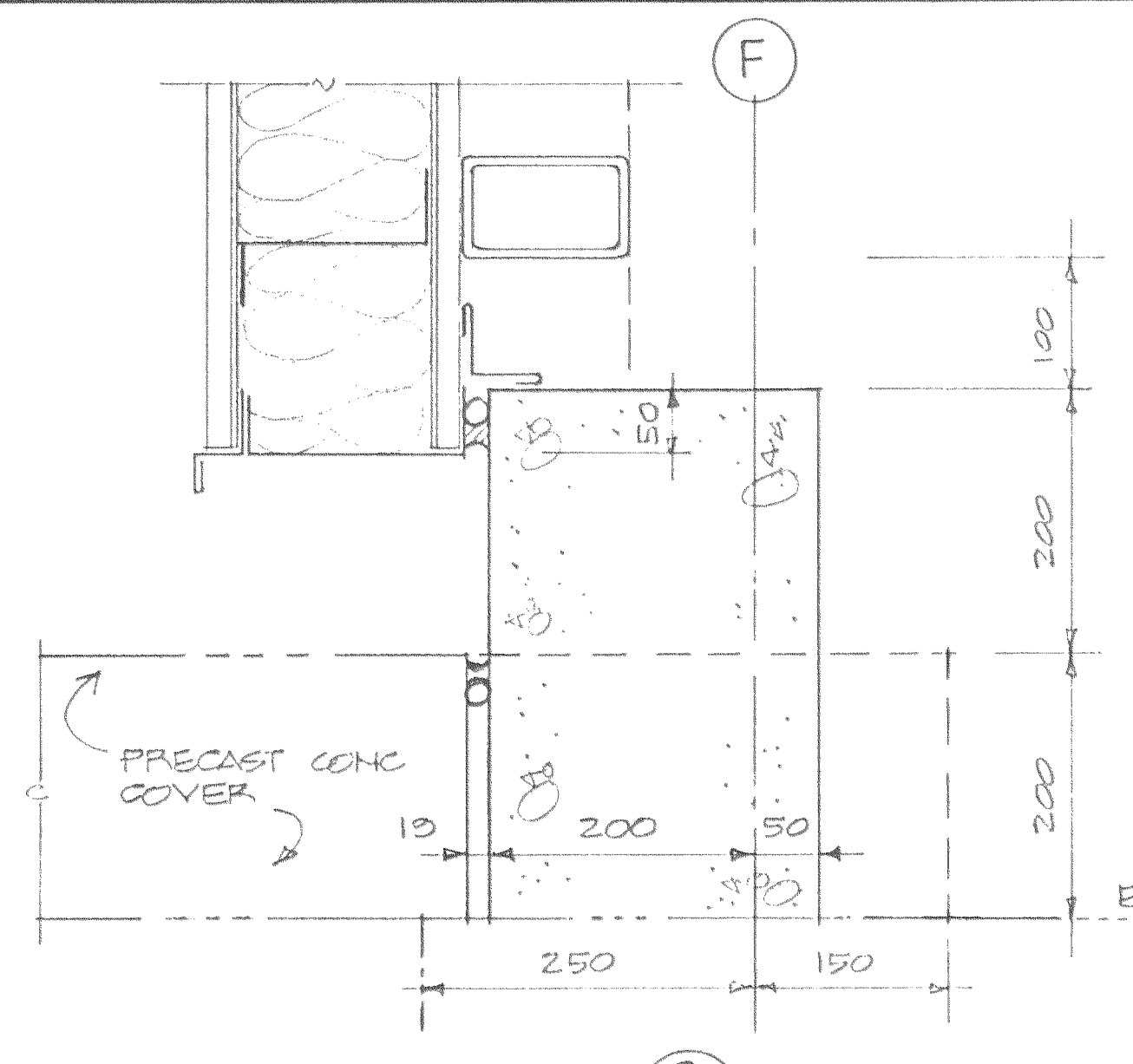
DAYTON & KNIGHT LTD.
 CONSULTING ENGINEERS

RESORT MUNICIPALITY OF WHISTLER
 SEWAGE TREATMENT PLANT - STAGE IIA EXPANSION
 DETAILS - SECTIONS

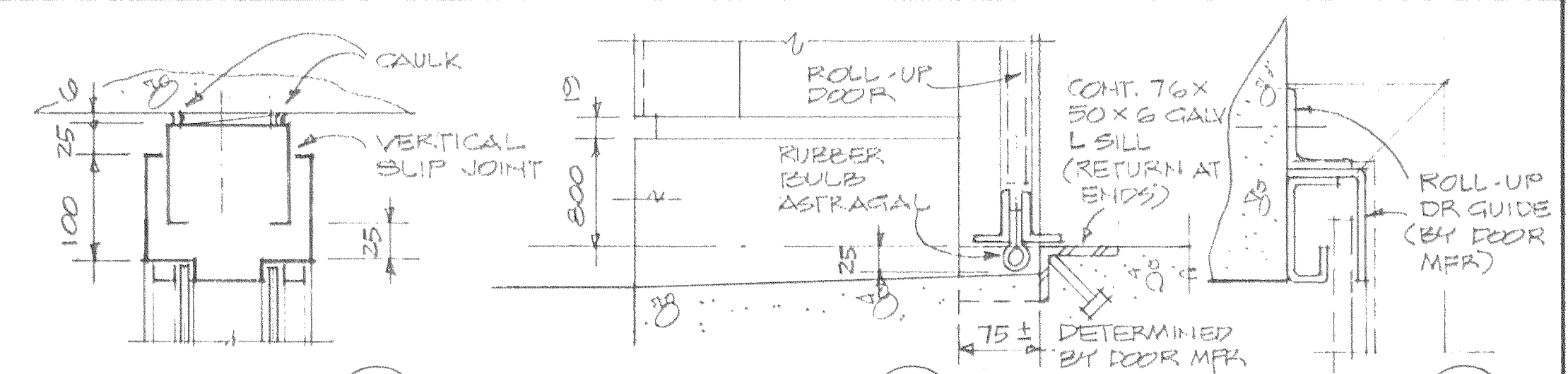
SCALE: 1:5
 DRAWING No. 179.3-6
 SHEET 19 OF 82 ISSUE B



SECTION 1 A207



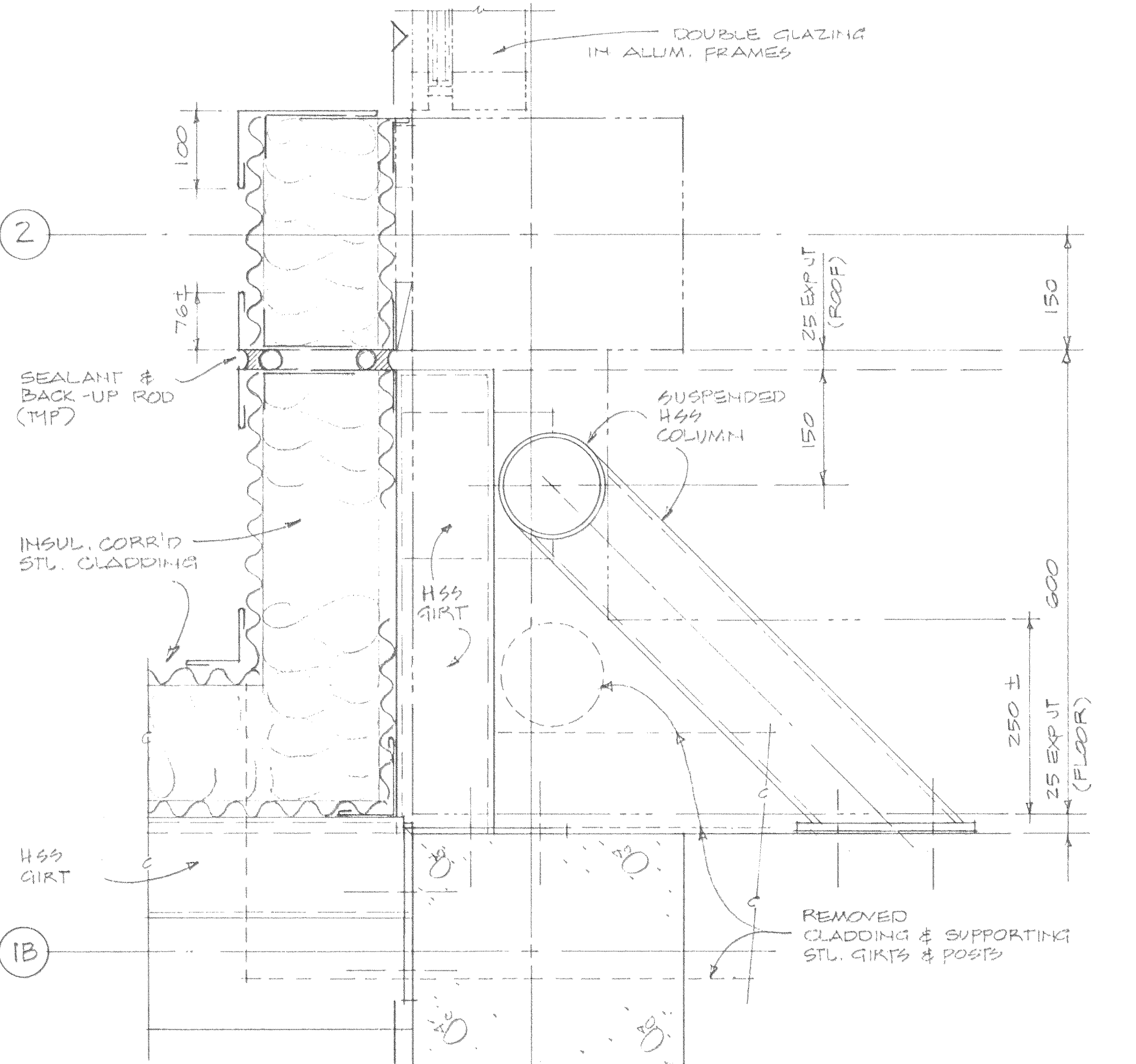
DETAIL C A205



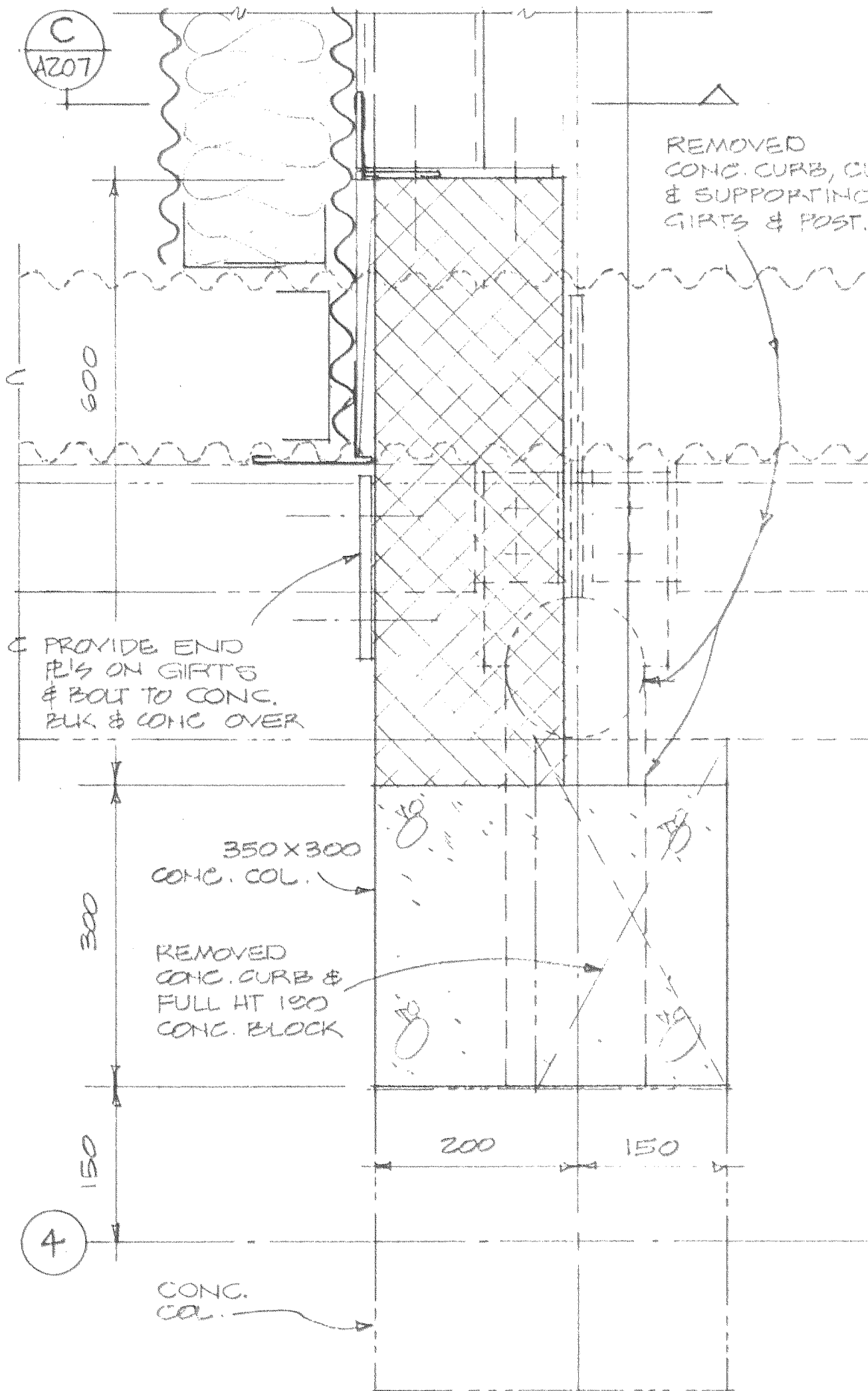
SECTION 2 A205

DETAIL D A205

SECTION 6 A205



DETAIL A A202 SCALE 1:5



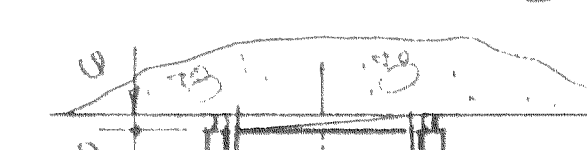
DETAIL B A202



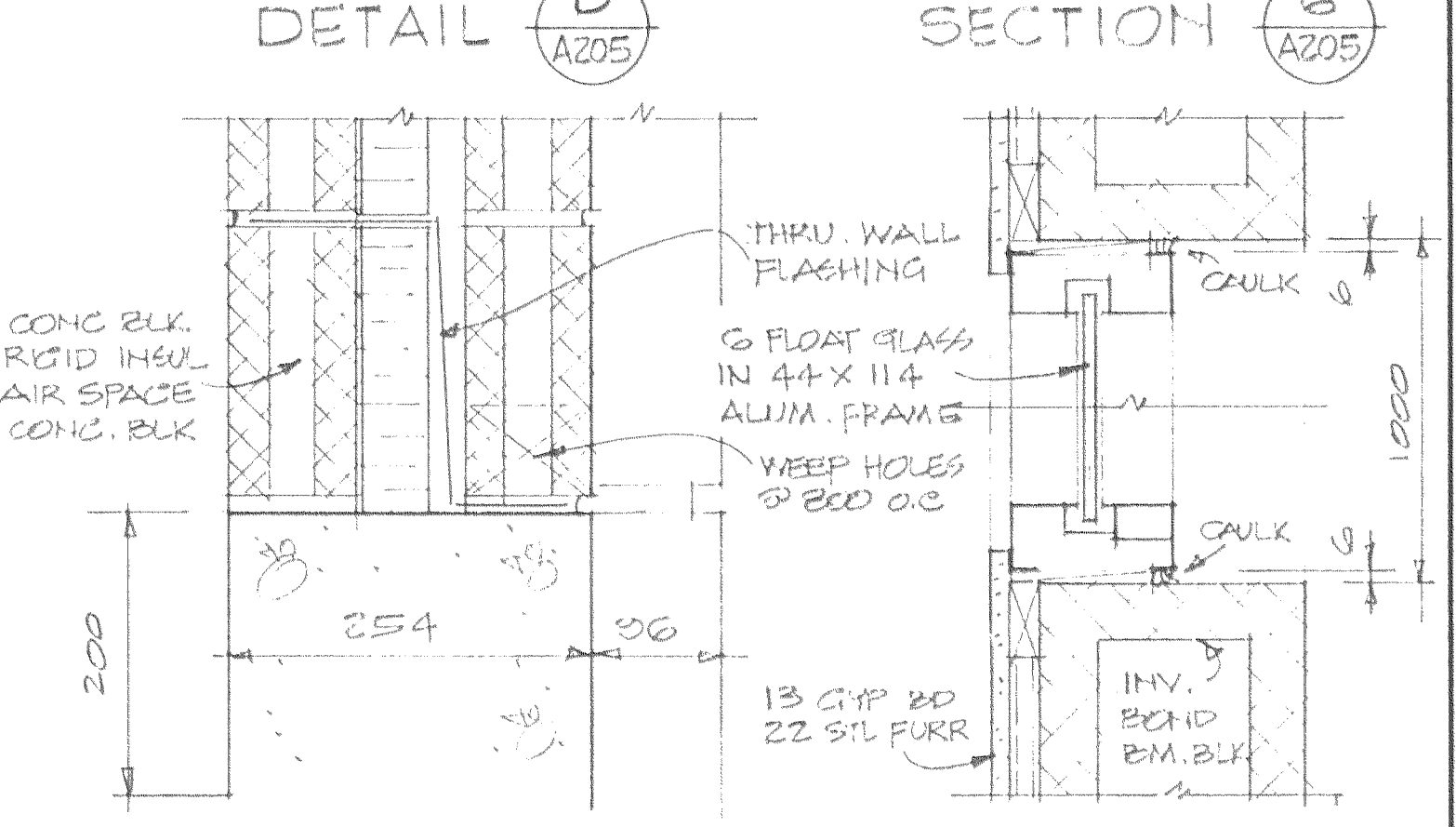
SECTION 3 A205



SECTION 4 A205



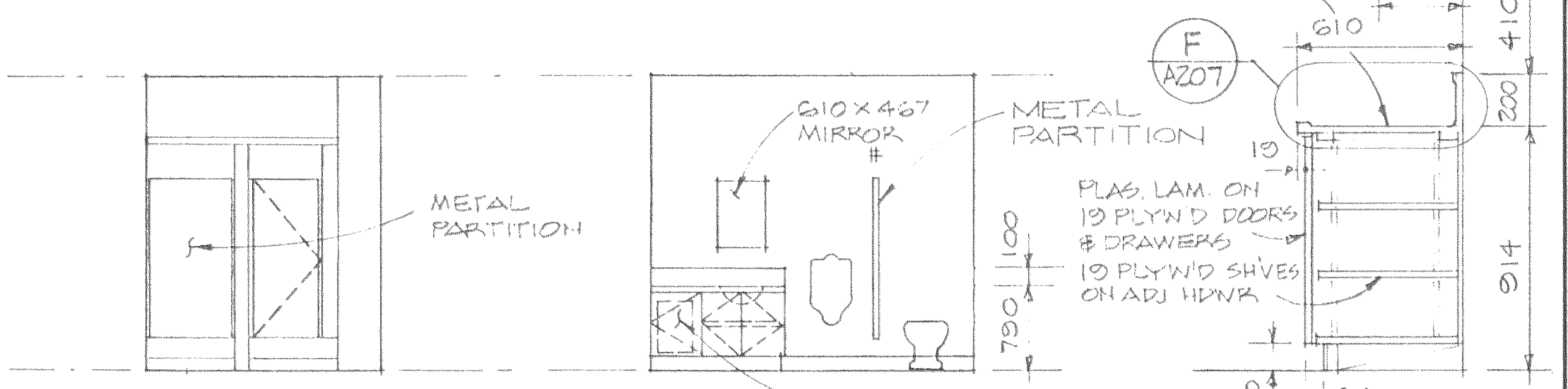
SECTION 5 A205



DETAIL E A205

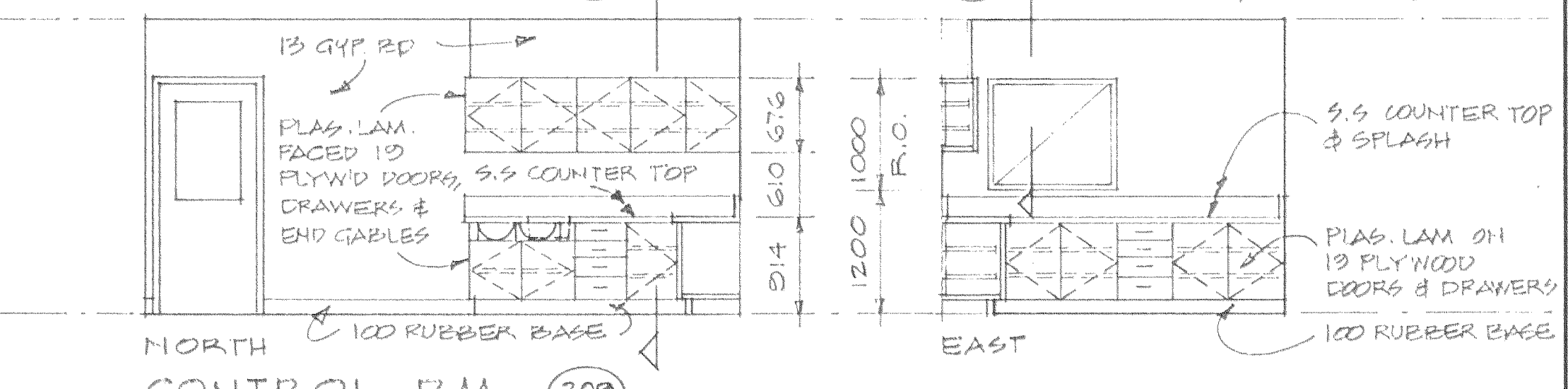
SECTION 7 A207

DETAIL F A207 SCALE 1:5



SOUTH WASHROOM 208

SECTION 8 A207



NORTH CONTROL RM 209

SECTION 9 A207 SCALE 1:50

REVISIONS

ISSUE	DATE	DRN	CHD	APPD	DESCRIPTION	ISSUE	DATE	DRN	CHD	APPD	DESCRIPTION
1B	APR/01/08	JCHU	WA		RECORD DRAWING						

DESIGNED: TRB SP
 DRAWN: CO
 CHECKED: DRW

DAYTON & KNIGHT LTD.
 CONSULTING ENGINEERS

RESORT MUNICIPALITY OF WHISTLER
 SEWAGE TREATMENT PLANT - STAGE IIA EXPANSION
 DETAILS - CONTROL ROOM

SCALE: AS NOTED
 DRAWING No. 179.3.6
 SHEET 16 OF 82 ISSUE 13
 A 107/207