

NOTE REFERENCES

EXISTING CONSTRUCTION

- (L) INSULATED FINISHED CORRUGATED STEEL CLADDING SYSTEM (TO MATCH EXISTING)
- (M) CORRUGATED TRANSLUCENT SKYLIGHT PANEL

NEW CONSTRUCTION

- (9) INSULATED FINISHED CORRUGATED STEEL CLADDING SYSTEM (TO MATCH EXISTING)
- (10) CORRUGATED TRANSLUCENT SKYLIGHT PANEL (TO MATCH EXIST.)
- (13) CONC. CURB (W x H)
- (15) PREFINISHED STEEL FLASHING (BY CLADDING SUPPLIER)
- (17) 64mm CONC. WEARING SLAB ON 6MIL. POLYURETHANE SLIP SHEET ON 75mm RIGID INSULATION
- (20) 2 PLY SBS ROOFING
- (21) 2 PLY SBS ROOFING ON 100mm RIGID INSULATION ON VAPOUR RETARDANT
- (23) PREFINISHED CORRUGATED STEEL CLADDING ON STRUCTURAL STEEL SUPPORT FRAMING
- (25) CONCRETE SURFACE SEALER (REFER TO STRUCT. SPEC.)
- (26) CONTINUOUS SEALANT & BACK-UP ROD.
- (31) GALV. STEEL GUARDRAIL (REFER MECH. DWGS.)
- (62) SHEET METAL DUCT (REFER MECH. DWGS.)
- (75) GALV. STEEL ACCESS LADDER (REFER MECH. DWGS.)

ACAD DWG: A104 1:100 96-04-24

ISSUE	DATE	DRAWN	CHK'D	APP'D	DESCRIPTION	ISSUE	DATE	DRAWN	CHK'D	APP'D	DESCRIPTION
B	APR/96	E.S.	C.O.	C.O.	ISSUED FOR CONSTRUCTION INCLUDES ADDENDA ITEMS						

DESIGNED: D.K.M.
DRAWN: B.D.C.
CHECKED: C.O.

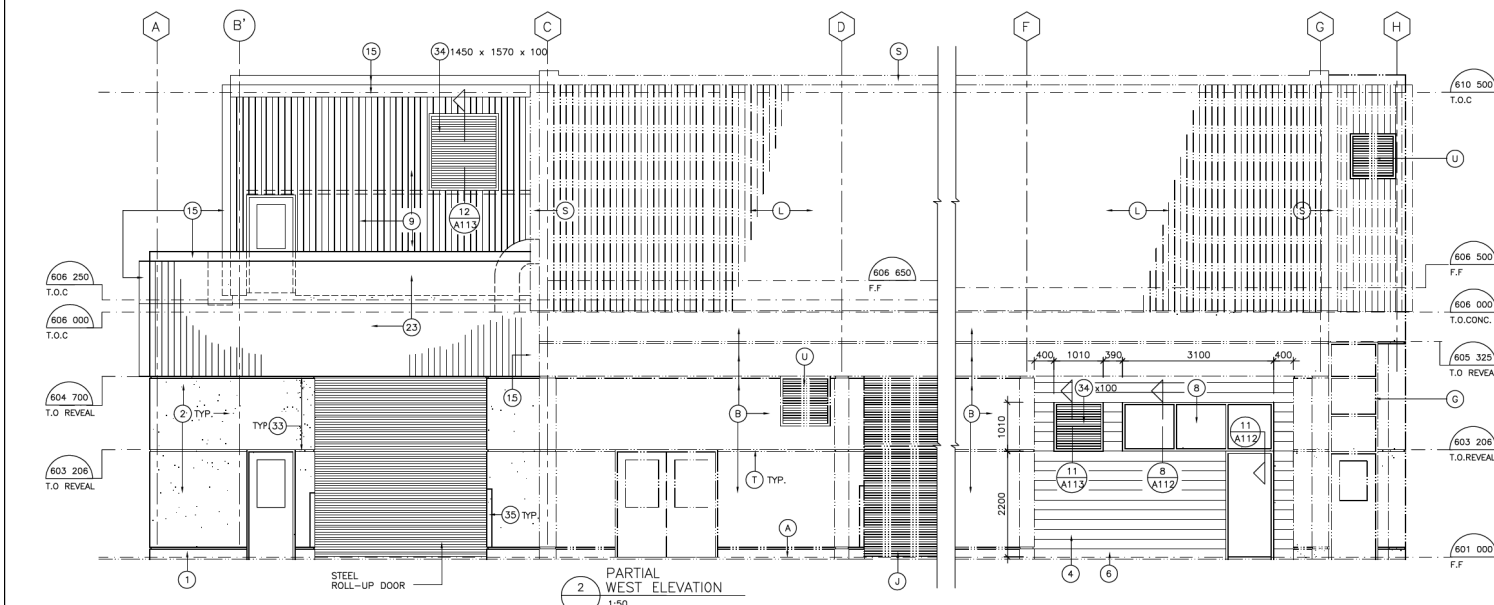
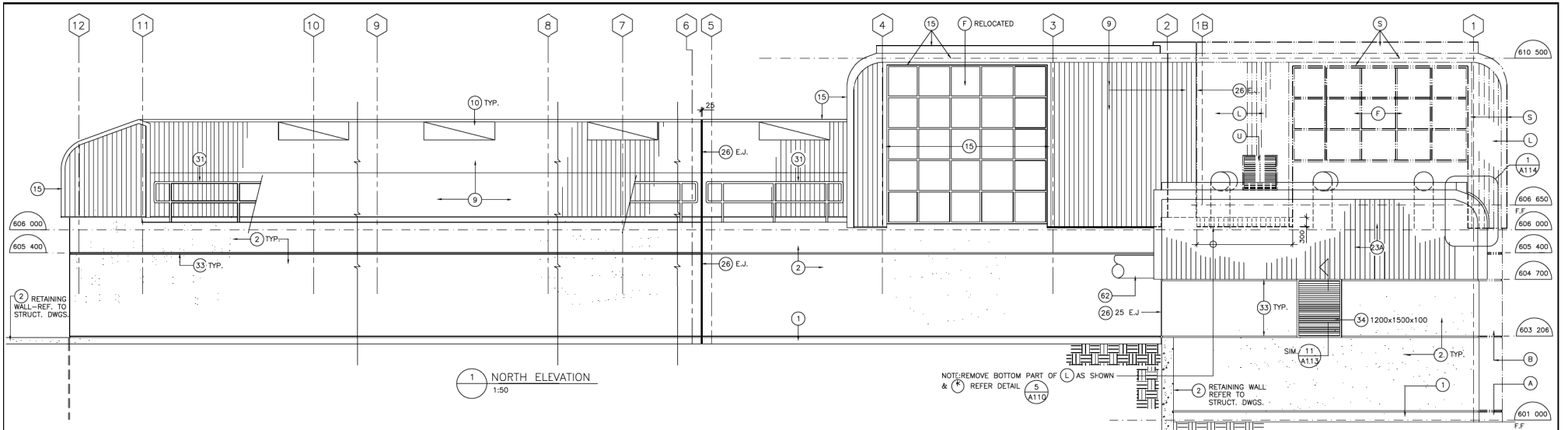
DAYTON & KNIGHT LTD.
Consulting Engineers

RESORT MUNICIPALITY OF WHISTLER
WASTEWATER TREATMENT PLANT-STAGE III EXPANSION - CONTRACT 1
HEADWORKS & PRIMARY SED. TANKS
ROOF PLAN

SCALE: 1:100
DRAWING No. 179.11.1
SHEET 45 OF 249 - ISSUE B

TOBY RUSSELL BUCKWELL & partners architects
1650 ALBERNI STREET, VANCOUVER, B.C.
CANADA, V6G 1B1. TEL.: [604] 382-6881
FAX: [604] 682-3081

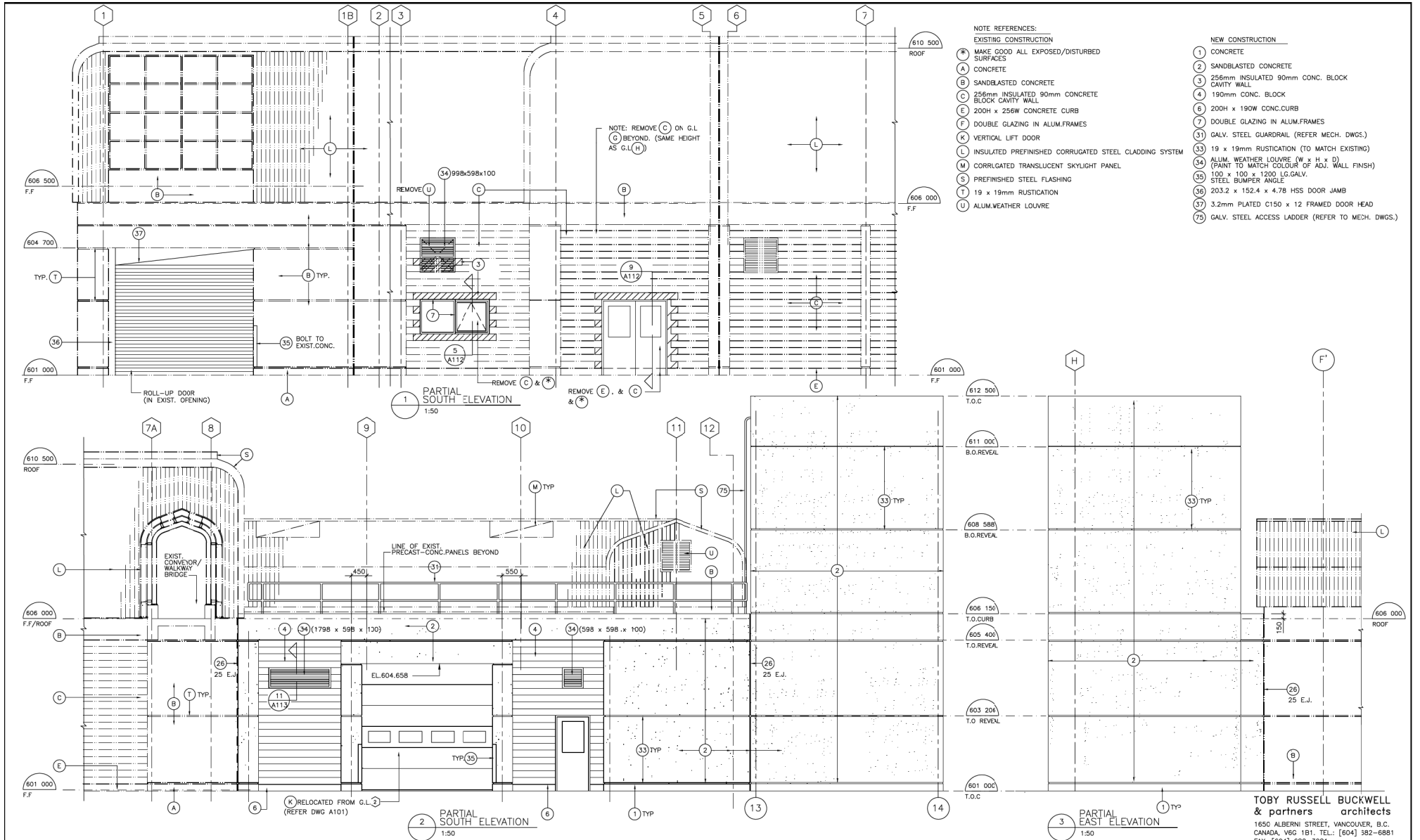




- NOTE REFERENCES:**
- EXISTING CONSTRUCTION**
- (*) MAKE GOOD ALL EXPOSED/DISTURBED SURFACES
 - (A) CONCRETE
 - (B) SANDBLASTED CONCRETE
 - (F) DOUBLE GLAZING IN ALUM. FRAMES
 - (G) GLAZED METAL DOOR, FRAME & TRANSOM PANELS
 - (J) ROLL-UP DOOR
 - (L) INSULATED PREFINISHED CORRUGATED STEEL CLADDING SYSTEM
 - (S) PREFINISHED STEEL FLASHING
 - (T) 19 x 19 RUSTICATION
 - (U) ALUM. WEATHER LOUVRE
- NEW CONSTRUCTION**
- (1) CONCRETE
 - (2) SANDBLASTED CONCRETE
 - (4) 190mm CONC. BLOCK
 - (6) 200H x 190W CONC. CURB
 - (8) DOUBLE 6mm FLOAT GLASS IN 146 x 50mm STEEL FRAMES
 - (9) INSULATED PREFINISHED CORRUGATED STEEL CLADDING SYSTEM (TO MATCH EXIST.)
 - (10) CORRUGATED TRANSLUCENT SKYLIGHT PANEL (TO MATCH EXIST.)
 - (15) PREFINISHED STEEL FLASHING (BY CLADDING SUPPLIER)
 - (23) PREFINISHED CORRUGATED STEEL CLADDING ON STRUCTURAL STEEL SUPPORT FRAMING
 - (24) PREFINISHED CORRUGATED STEEL CLADDING ON 1.22mm G90 GALV. SPLIT 'Z' SUB-GIRTS
 - (26) CONTINUOUS SEALANT & BACK-UP ROD
 - (31) GALV. STEEL GUARDRAIL (REFER MECH. DWGS.)
 - (33) 19 x 19mm RUSTICATION (TO MATCH EXISTING)
 - (34) ALUM. WEATHER LOUVRE (W x H x D) (PAINT TO MATCH COLOUR OF ADJ. WALL FINISH)
 - (35) 100 x 100 x 1200 LG. GALV. STEEL BUMPER ANGLE
 - (62) SHEET METAL DUCT (REFER MECH. DWGS.)

TOBY RUSSELL BUCKWELL & partners architects
 1650 ALBERNI STREET, VANCOUVER, B.C.
 CANADA, V6G 1B1. TEL.: [604] 382-6881
 FAX: [604] 682-3081

ACAD DWG: A108 1:50 95-04-24										DESIGNED - D.K.M.		DAYTON & KNIGHT LTD. Consulting Engineers		RESORT MUNICIPALITY OF WHISTLER WASTEWATER TREATMENT PLANT - STAGE III EXPANSION - CONTRACT 1 HEADWORKS & PRIMARY SED. TANKS NORTH & WEST ELEVATIONS		SCALE: 1:50 DRAWING No. 179.11.1 SHEET 46 OF 249 - ISSUE B	
ISSUED FOR CONSTRUCTION										DRAWN - B.D.C.				A105/A205 A105/A205			
REVISED	ISSUE	DATE	DRAWN	CHK'D	APP'D	DESCRIPTION	ISSUE	DATE	DRAWN	CHK'D	APP'D	DESCRIPTION	DESIGNED	WASTEWATER TREATMENT PLANT - STAGE III EXPANSION - CONTRACT 1 HEADWORKS & PRIMARY SED. TANKS NORTH & WEST ELEVATIONS		SCALE: 1:50 DRAWING No. 179.11.1 SHEET 46 OF 249 - ISSUE B	
	B	APR/96	E.S.	C.O.	C.O.	ISSUED FOR CONSTRUCTION							CHECKED				



ACAD DWG: A106 1:50 95-04-24

ISSUE	DATE	DRAWN	CHK'D	APP'D	DESCRIPTION	ISSUE	DATE	DRAWN	CHK'D	APP'D	DESCRIPTION
B	APR/96	E.S.	C.O.	C.O.	ISSUED FOR CONSTRUCTION						

DESIGNED: D.K.M.
 DRAWN: B.D.C.
 CHECKED: C.O.

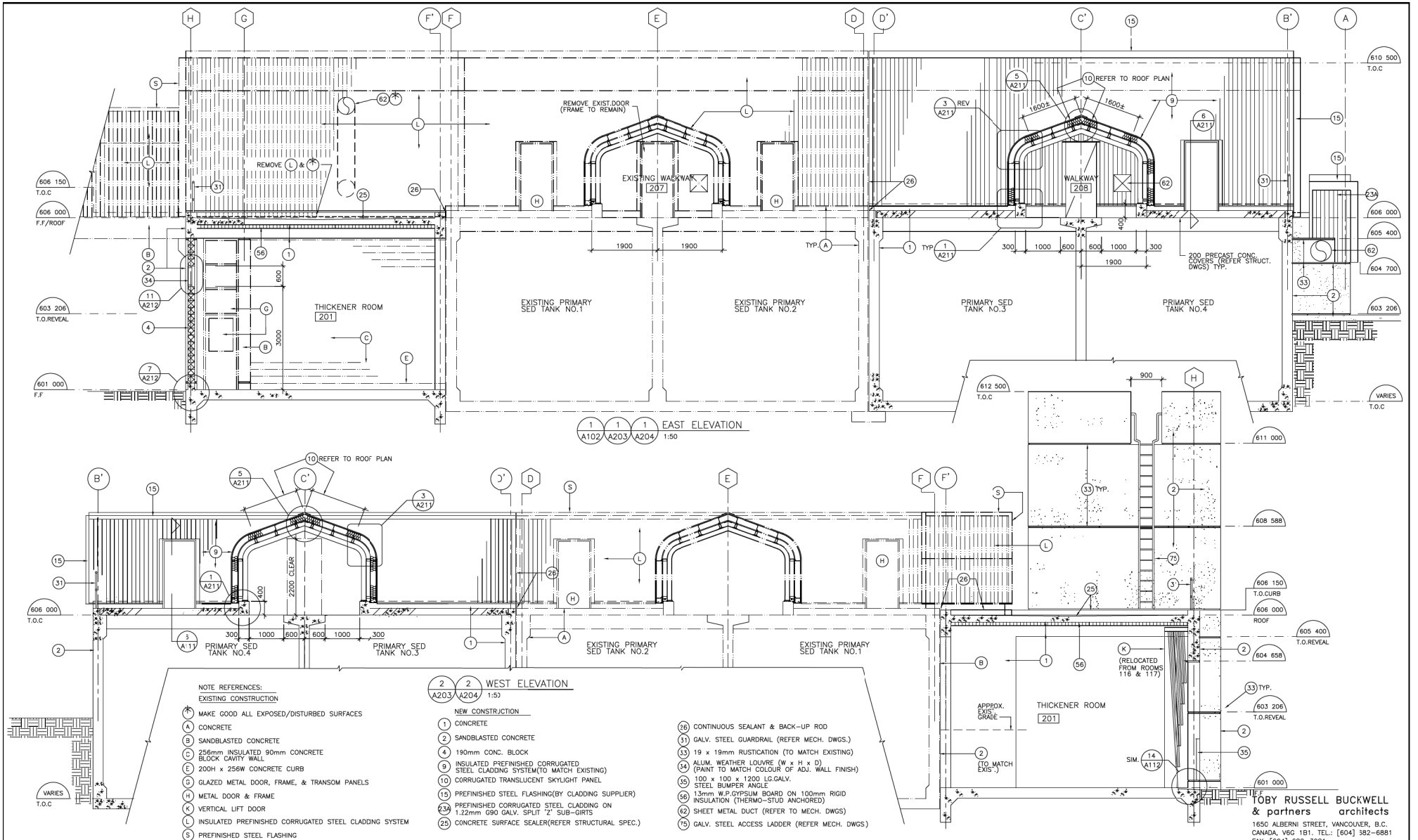


RESORT MUNICIPALITY OF WHISTLER
 WASTEWATER TREATMENT PLANT-STAGE III EXPANSION - CONTRACT 1
 HEADWORKS & PRIMARY SED. TANKS
 SOUTH ELEVATION

TOBY RUSSELL BUCKWELL & partners architects
 1650 ALBERNI STREET, VANCOUVER, B.C.
 CANADA, V6G 1B1. TEL.: [604] 382-6881
 FAX: [604] 682-3081

SCALE: 1:50
 DRAWING No. 179.11.1
 SHEET 47 OF 249 ISSUE B

A106/206



ACAD DWG: A107 1:50 96-04-24

ISSUE	DATE	DRAWN	CHK'D	APP'D	DESCRIPTION	ISSUE	DATE	DRAWN	CHK'D	APP'D	DESCRIPTION
B	APR/96	E.S.	C.O.	C.O.	ISSUED FOR CONSTRUCTION						

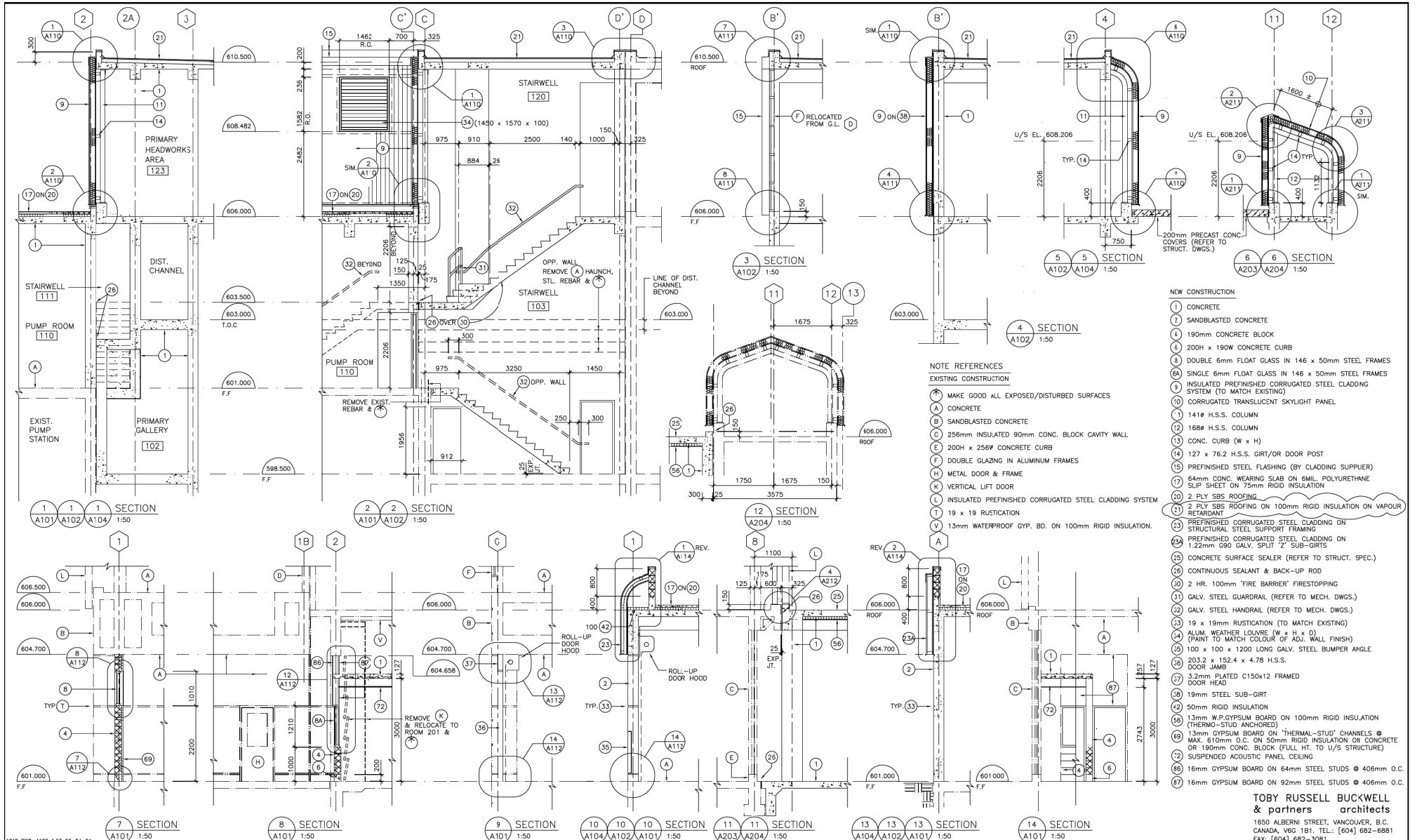
DESIGNED: D.K.M.
 DRAWN: B.D.C.
 CHECKED: C.O.



RESORT MUNICIPALITY OF WHISTLER
 WASTEWATER TREATMENT PLANT-STAGE III EXPANSION - CONTRACT 1
 HEADWORKS & PRIMARY SED. TANKS
 EAST & WEST ELEVATION

SCALE: 1:50
 DRAWING No. 179.11.1
 SHEET 46 OF 249 ISSUE B
 A107/A207

TOBY RUSSELL BUCKWELL & partners architects
 1650 ALBERNI STREET, VANCOUVER, B.C.
 CANADA, V6G 1B1. TEL.: [604] 382-6881
 FAX: [604] 682-3081



- NEW CONSTRUCTION**
- 1 CONCRETE
 - 2 SANDBLASTED CONCRETE
 - 3 190mm CONCRETE BLOCK
 - 4 200H x 190W CONCRETE CURB
 - 5 DOUBLE 6mm FLOAT GLASS IN 146 x 50mm STEEL FRAMES
 - 6 SINGLE 6mm FLOAT GLASS IN 146 x 50mm STEEL FRAMES
 - 7 INSULATED PREFINISHED CORRUGATED STEEL CLADDING SYSTEM (TO MATCH EXISTING)
 - 8 CORRUGATED TRANSLUCENT SKYLIGHT PANEL
 - 9 141H H.S.S. COLUMN
 - 10 168H H.S.S. COLUMN
 - 11 CONC. CURB (W x H)
 - 12 127 x 76.2 H.S.S. GIRT/OR DOOR POST
 - 13 PREFINISHED STEEL FLASHING (BY CLADDING SUPPLIER)
 - 14 64mm CONC. WEARING SLAB ON 6mm POLYURETHANE SLIP SHEET ON 75mm RIGID INSULATION
 - 15 2 PLY SBS ROOFING
 - 16 2 PLY SBS ROOFING ON 100mm RIGID INSULATION ON VAPOUR RETARDANT
 - 17 PREFINISHED CORRUGATED STEEL CLADDING ON STRUCTURAL STEEL SUPPORT FRAMING
 - 18 PREFINISHED CORRUGATED STEEL CLADDING ON 1.22mm G90 GALV. SPLIT 'Z' SUB-GIRTS
 - 19 CONCRETE SURFACE SEALER (REFER TO STRUCT. SPEC.)
 - 20 CONTINUOUS SEALANT & BACK-UP ROD
 - 21 2 HR. 100mm 'FIRE BARRIER' FIRESTOPPING
 - 22 GALV. STEEL GUARDRAIL (REFER TO MECH. DWGS.)
 - 23 GALV. STEEL HANDRAIL (REFER TO MECH. DWGS.)
 - 24 19 x 19mm RUSTICATION (TO MATCH EXISTING)
 - 25 ALUM. WEATHER LOUVER (W x H x D) (PAINT TO MATCH COLOUR OF ADJ. WALL FINISH)
 - 26 100 x 100 x 1200 LONG GALV. STEEL BUMPER ANGLE
 - 27 203.2 x 152.4 x 4.78 H.S.S. DOOR JAMB
 - 28 3.2mm PLATED C150x12 FRAMED DOOR HEAD
 - 29 19mm STEEL SUB-GIRT
 - 30 50mm RIGID INSULATION
 - 31 13mm W.P. GYPSUM BOARD ON 100mm RIGID INSULATION (THERMO-STUD ANCHORED)
 - 32 13mm GYPSUM BOARD ON 'THERMAL-STUD' CHANNELS @ MAX. 610mm O.C. ON 50mm RIGID INSULATION ON CONCRETE OR 190mm CONC. BLOCK FULL HT. TO U/S STRUCTURE)
 - 33 SUSPENDED ACOUSTIC PANEL CEILING
 - 34 16mm GYPSUM BOARD ON 64mm STEEL STUDS @ 406mm O.C.
 - 35 16mm GYPSUM BOARD ON 92mm STEEL STUDS @ 406mm O.C.

NOTE REFERENCES

EXISTING CONSTRUCTION

- (*) MAKE GOOD ALL EXPOSED/DISTURBED SURFACES
- A CONCRETE
- B SANDBLASTED CONCRETE
- C 256mm INSULATED 90mm CONC. BLOCK CAVITY WALL
- D 200H x 256W CONCRETE CURB
- E DOUBLE GLAZING IN ALUMINUM FRAMES
- F METAL DOOR & FRAME
- G VERTICAL LIFT DOOR
- H INSULATED PREFINISHED CORRUGATED STEEL CLADDING SYSTEM
- I 19 x 19 RUSTICATION
- J 13mm WATERPROOF GYP. BD. ON 100mm RIGID INSULATION.

ACAD DWG: A108 1:50 95-04-24				ISSUE FOR CONSTRUCTION				DESIGNED - D.K.M.		DAYTON & KNIGHT LTD.		RESORT MUNICIPALITY OF WHISTLER		SCALE: 1:50	
ISSUED FOR CONSTRUCTION				DATE		DRAWN		CHECKED		CONSULTING ENGINEERS		WASTEWATER TREATMENT PLANT-STAGE III EXPANSION - CONTRACT 1		DRAWING No. 179.11.1	
INCLUDES ADDENDA ITEMS				DATE		CHK'D		APP'D		ARCHITECTS		HEADWORKS & PRIMARY SED. TANKS SECTIONS		SHEET 49 OF 249	
REVISIONS				DATE		CHK'D		APP'D		DESCRIPTION		ISSUE B		ISSUE B	
B				APR/96		E.S.		C.O.							