

REQUEST FOR QUOTATION

River of Golden Dreams Weir and Fishway
Improvement Project

Resort Municipality of Whistler
whistler.ca



Request for Quotation

River Of Golden Dreams Weir and Fishway Improvement Project

The Resort Municipality of Whistler (RMOW)

Request Number: P102-2024

Issued: March 26, 2024

Closing Time and Date: 16:00:00 hours; April 17, 2024
Bids to be emailed to
climateandenvironmentprocurement@whistler.ca

Closing Location: RMOW Municipal Hall
4325 Blackcomb Way Whistler BC V0N 1B4

Non-Compulsory Site Meeting: 13:00 Weds. April 3, 2024.
End of Lorimer Rd. where it meets the Valley Trail adjacent to the Catholic Church of Whistler. 5 min walk into the site from there.

Contact Person: Tara Schaufele, Environmental Stewardship Supervisor
climateenvironmentprocurement@whistler.ca

REQUEST FOR QUOTATION

Introduction

The Resort Municipality of Whistler (RMOW) invites qualified Proponents to provide quotations for weir and fishway installation works in the River of Golden Dreams for river enhancement purposes. The installation of the weir is intended to improve fish passage and habitat, reduce visitor impacts on the streambed and minimize the length of the user's portage. The work window to complete this project is in between August 12 and 16—works must be completed within the second week of the designated Provincial fish window for instream works.

The RMOW has obtained and holds the Canadian National Railway (CN) permit to complete this work and has completed the Request for Review to the Fish and Fish Habitat Protection Program (FFHPP) of Department of Fisheries and Oceans (DFO). However, the Change Approval application is pending approval. If permits for this work are not received from the government agency, this project will be postponed until required permits are received. It will be at the sole discretion of the RMOW to extend the agreement term or retender the RFQ if the required permit / approval is not received with sufficient time to complete the project in 2024.

The RMOW is responsible for all permitting and approvals associated. The contract is held to any requirements or stipulations in the permitting and approval documents.

Scope of Work

The project works consist of installation of a precast concrete weir structure within the ROGD channel and fishway. The fishway is designed to promote fish passage around the weir and is anticipated to simulate a natural riffle-pool complex with variable velocities at riffle crests and resting pool habitat to support a wide range of species, life stages and flow conditions.

The scope of work is to include, but may not be limited to:

1. Communicate and discuss details of work plan and coordinate any necessary site preparation works that will be completed by RMOW staff or other contractors.
2. Perform traffic control actions, when necessary, at Lorimier road entrance into Valley Trail. Note; Valley trail to be closed to public by RMOW.
3. Stripping and disposal of the remaining 2m buffer of organics from existing creek to top of bank on river right, along precast concrete block wall works area following stream isolation.
4. Implement stream diversion or bypass for duration of instream works to allow for excavation, subgrade preparation, and placement of engineered fill and precast structures in isolation of water. Water levels are anticipated to be low during the work window. Exact method of stream diversion or bypass will need to consider environmental conditions at the time of the project (i.e., weather, river levels, etc.). If levels allow, preferred method would be bypass. In the event of higher water and river diversion is required, this would be done at time and material rates addition to the bid price.

5. Onsite monitoring of stream bypass over weekend (August 10th and 11th) while construction is halted to ensure diversion remains in place.
6. Excavate and dispose of channel bed and banks to suitable subgrade and slopes as approved by the Geotechnical Engineer.
7. Supply, place and compact Engineered Fill subgrade to design elevation (min. 300 mm thick) as directed and approved by the Geotechnical Engineer and Environmental Monitor (EM).
8. Supply, place and compact (as necessary) seepage cut off wall material as directed and approved by the Engineer. For further details see IFQ drawing and listed in SQP.
9. Supply and install of non-woven geotextile. For further details see IFQ drawing and listed in SQP.
10. Place pre-cast concrete block wall on the river right bank.
11. Place pre-cast concrete weir and fishway components. Total of six (6) structures ranging in mass from 4,800 kg to 6,800 kg, supplied with Starcon style lifting inserts. Anchor all pre-cast concrete structures together with supplied anchor bolts. Seal all pre-cast concrete joints and ensure watertight.
12. Supply and place 10 kg rounded rock bed armoring.
13. Supply and place compact Engineered Fill and seepage cut off materials on banks.
14. Supply and place 10kg Riprap on banks.
15. Supply and place large rectangular or cubical 500-750mm diameter shaped rock used where localized bank steepening is required to transition to natural bank. In SQP and shown on IFQ. Could possibly be sourced and supplied by Jay's team and then just placed by contractor.

Project Deliverables

All deliverables implemented will incorporate mitigation steps outlined by the Environmental Monitor to avoid or mitigate death of fish and/or harmful alteration, disruption or destruction to fish habitat and will complete all works in accordance to Municipal, Provincial and Federal regulations.

The project deliverables are:

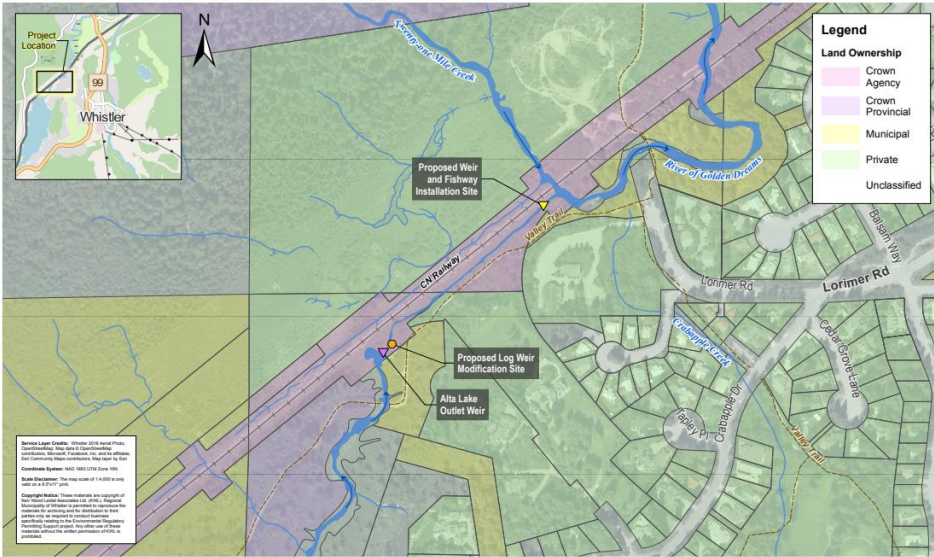
- Stream bypass or diversion.
- Bed and Bank Protection, and Disposal of Unsuitable Material.
- Preparation of subgrade with oversight from Geotechnical Engineer.
- Installation of all weir and fishway components, including rip rap, rounded rock, river rock, and baffle crest rock in the River of Golden Dreams as per contract drawings with oversight from the Engineer.

- Reposition any large woody debris to provide fish habitat and cover.
- Traffic control both at construction laydown area and entrance to Valley Trail.

Exclusions are:

- Environmental Monitoring Services provided by RMOW.
- Majority of clearing, stripping, and disposal of all organics by RMOW other than 2m buffer as specified.
- Site access road for construction vehicles to access weir by RMOW.
- Laydown area at the end of Lorimer road fenced and secured by RMOW prior to instream work window.
- Fish isolation and exclusion fencing and fish salvage completed by RMOW prior to works.
- Removal of woody debris and associated accumulated sediment and vegetation at upstream extent of proposed dock (approximately 3 m²) to accommodate ramp completed by RMOW.
- Repositioning of any removed large woody debris back into the channel to provide instream cover for fish completed by RMOW.
- Installation of stop-log weir components completed by RMOW.
- Supply of lock-blocks by RMOW.
- Supply pre-cast concrete weir and fishway components by RMOW.

Weir and Fishway Location Map:



Location Plan

Figure 1

Weir Installation Site:



Figure 7 US view of the 2024 proposed weir installation site—date of photo August 30, 2023

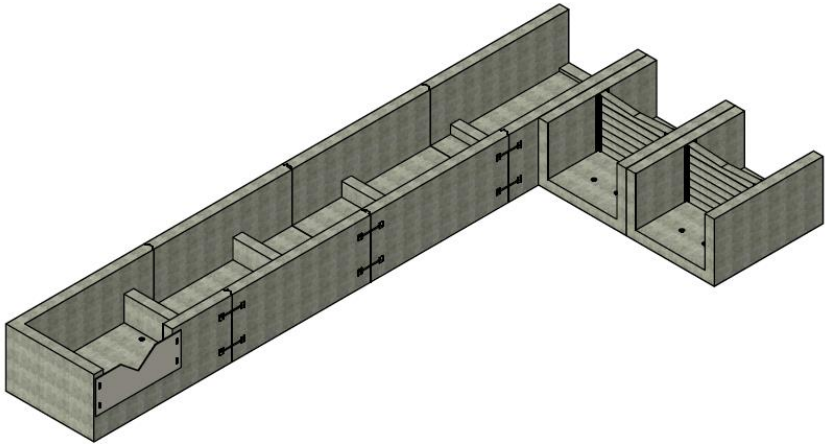
Please ref IFQ drawings – 2024-03_26_ROGD_PropWeirFishway_IFQ_Sealed.pdf

Contractor to review and be familiar with the Construction Environmental Management Plan (CEMP) – 2023-11-24-CEMP_Final.pdf

Weir and Fishway components:

PART LIST			
ITEM	QTY	PART NUMBER	WEIGHT
1	1	Fishway #1	6,800 kg
2	2	Fishway #2	6,300 kg
3	1	Fishway #3	6,200 kg
4	1	Fishway #4	6,200 kg
5	1	Fishway #5 and #6	4,800 kg
6	1	Plate	
7	8	50 x 50 x 6mm Galvanized Angle	
8	28	Bolt	
9	24	Washer	
10	24	Nut	
11	24	Steep Plate	
12	12	Ø25mm Threaded Rod	
13	24	5T x 140mm Lifting Insert	






By accepting and returning an approved shop drawing provided by the Langley Concrete Group for a specific product or project, the responsibility for the final product manufactured and provided in accordance with the drawings shall be borne by the customer. The Langley Concrete Group bears no responsibility, financial or otherwise, for errors in the finished product received unless proven it differs from the approved shop drawing. Langley Concrete Group responsibility is limited to the structural design and fabrication of the product to required engineering and relevant specifications related to the product and/or project.



Isometric View

Note:

- Reinforced Precast concrete structure to be built as shown.
- Unit supplied with lifting insert as required. Starcon style min. 5T/140mm lifting inserts to be used.
- Note: Sling angle to the vertical no more than 15°.
- WWF minimum yield strength: 448 MPa (Steel Grade: ASTM A1064).
- Minimum rebar yield strength: 414 MPa. (Steel Grade: CSA G30.18 - 400 weldable).
- Minimum concrete strength: 35 MPa.
- All dimensions are in millimeters unless otherwise specified.

Langley Concrete Group is a certified Q-Cast Plant, an American Concrete Pipe Association Third Party Certification for the manufacture of Pipe, Manhole, Box Culvert & Precast Items.	Quality Assurance of products manufactured by The Langley Concrete Group has been verified by the following third party certification programs	All Dimensions are in Millimeters. Unless otherwise Stated	 THE LANGLEY CONCRETE Group of Companies www.langleyconcretegroup.com LANGLEY (604) 533-1656 DUNCAN (250) 478-9581 CHILLIWACK 1-800-667-9500	This drawing is the property of the Langley Concrete Group of companies. All information contained herein is confidential and may not be used in whole or in part without written permission from the owner	DESCRIPTION: Fishway with Concrete Baffle R.O.W Construction resort Municipality of Whistler River of Golden Dreams Weir and Fishway	DRAWN BY: SR	JOB NO.:
	 	Projection Method: THIRD ANGLE 				CHK BY: MP	DWG NO.: DWG24-001
						DATE: Jan.04, 2024	LC NO.: LC24-001
						SCALE: 1:50	REV NO.: MU24-001
						SIZE: 11 x 17	SHEET 1 OF 2

General Construction Notes:

Contractor is responsible for safety in and about the job site during construction and will be required to submit warranty documentation on completion.

Engineers, QEP and RMOW staff and equipment may be on site. All applicable PPE to be worn at all times. Work site, Valley Trail and Laydown area to be kept clean and organized and safe at all times.

All works to be carried out as per engineers' details and recommendations.

Schedule of Quantities

Please ref SQP document – 2024-_ROGD_SQP.pdf

DESCRIPTION	UNIT	LUMP SUM PRICE
Schedule Of Quantities Total		
[Product/Service 2 provide description/specification]		
[Product/Service 3 provide description/specification]		
[Product/Service 4 provide description/specification, etc. insert/delete rows as required]		
	PST	
	GST	
	Total	

The undersigned agrees to be bound by the warranty and conditions of this Request for Quotation and to supply the items listed at the prices quoted. If a purchase order is issued by the RMOW to the undersigned, the undersigned will be bound by and will comply with the terms and conditions contained in the Request for Quotation and the purchase order which will constitute the full and complete agreement between the parties.

Please outline warranty included in your price

Please outline extended warranties and price if applicable

This Quote request, your response and the attached terms and conditions govern our agreement.

BIDDER INFORMATION	
Name and title of individual	
Company name	
Company address	
Phone numbers	Ph.
Email address	

Signature of Person authorized to bind the bidder/Supplier

Date

1.0 REQUEST FOR QUOTATION TERMS AND CONDITIONS

1. Late submissions or quotations will not be accepted or considered. It is the responsibility of the bidder to ensure that the quotation arrives prior to the date and time and at the place indicated in this Request for Quotation.
2. Quotations must be in Canadian funds and include delivery destination duty paid (D.D.P.), Incoterms 2010.
3. If a bidder discovers that it has made an error in its quotation, the bidder may forward a correction notice to the RMOW at this office, but it must be received prior to the closing date and time for the Request for Quotation. Unless otherwise specified, quotations will be open for acceptance for 90 days after the closing date.
4. When quotations have been received and an award made, the successful bidder will be held to its quotation as of the closing of the Request for Quotation irrespective of subsequent representation that mistakes have been made in the quotation originally submitted.
5. Notwithstanding paragraph 4 above, if it appears that an error has been made in a quotation, the RMOW may, in its sole discretion, before awarding an order, communicate with the potential supplier to ascertain if it will supply at the quoted price or withdraw the quotation. If the potential supplier is permitted to withdraw its quotation, the potential supplier will not be considered on this Request for Quotation.
6. The RMOW reserves the right to award this order in part or in full, on the basis of quotations received unless the potential supplier specifies that its quotation is valid only for the complete order.
7. The lowest or any quotation will not necessarily be accepted.
8. In the event of a discrepancy between the unit price and the extended price, the unit price shall govern.
9. Bidders should use the unit of measure shown in the Request for Quotation. Where conversions are required, these should be done by the bidder prior to submitting quotation.
10. Bidders should refer to the Request for Quotation number in all correspondence.
11. Bidders must comply with all applicable laws.

12. Bidders are solely responsible for their own expenses, if any, in preparing an Request for Quotation response and subsequent negotiation with the RMOW, if any.
13. All inquiries related to this Request for Quotation are to be directed to the RMOW, Procurement Services, as noted on the first page of this Request for Quotation. Information obtained from any other source should not be relied upon. Do not contact the facility or end user. Inquiries and responses may be distributed to all bidders at the RMOWs' option.
14. All documents submitted to the RMOW are subject to the disclosure provisions of the Freedom of Information and Protection of Privacy Act.
15. The RMOW will not be obligated in any manner to any potential supplier whatsoever until a Purchase Order has been issued by the RMOW respecting a quote.
16. In the event of a tied bid, the bidder with the closest proximity to the RMOW shall be deemed the successful bidder.

2.0 FORM OF CONTRACT

Please see the attached draft copy of the Master Contracting Services Agreement 2024-2025