

# REQUEST FOR QUOTATION

Spruce Grove Field 3 Lighting Replacement.

Resort Municipality of Whistler  
[whistler.ca](http://whistler.ca)



*Request for Quotation*

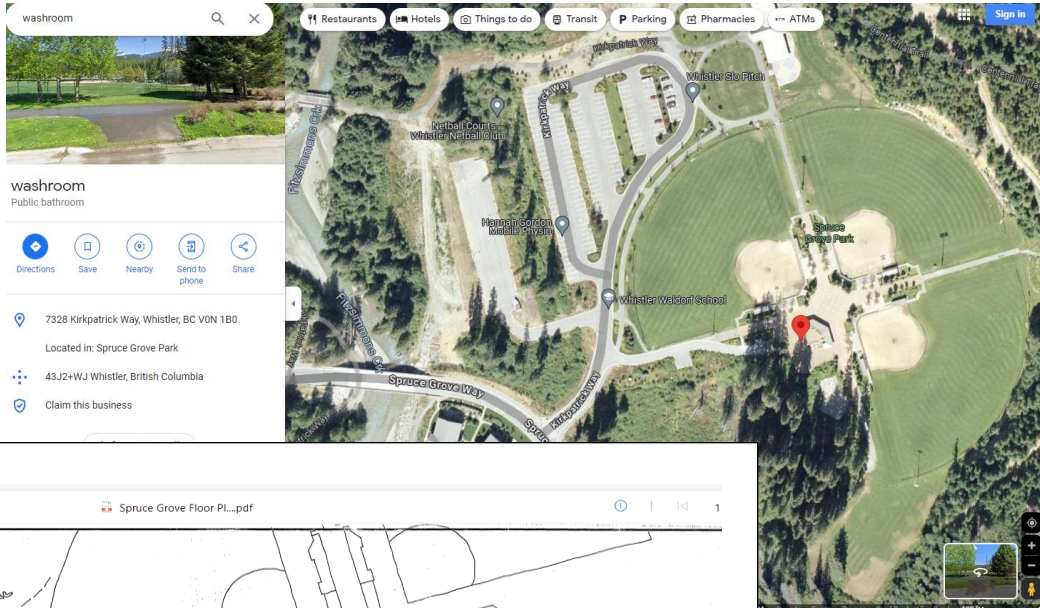
*~Spruce Grove Field 3 Lighting Replacement.*

*The Resort Municipality of Whistler (RMOW)*

|                              |  |
|------------------------------|--|
| Request Number               | 5330-02-1032   |
| Issued:                      | ~26 <sup>th</sup> April, 2024.   |
| Closing Time and Date:       | 16:00:00 hours; ~ May 17 <sup>th</sup> - 2024.   |
| Closing Location:            | RMOW Municipal Hall<br>4325 Blackcomb Way Whistler BC V0N 1B4<br>Bids to be emailed to<br>fcmcapitalprojects@whistler.ca |
| Non-compulsory Site Meeting: | 13:00 (1:00pm)<br>Thursday 9th, 2024.<br>Spruce Grove Park<br>Kirpatrick Way<br>Whistler.                                |
| Contact Person:              | Marc Freno, Capital Project Supervisor<br>fcmcapitalprojects@whistler.ca<br>Office number 604 935 8373                   |

# 1.0 REQUEST FOR QUOTATION

## Spruce Grove Field 3 Lighting Replacement Kirpatrick Way Whistler BC



## Summary

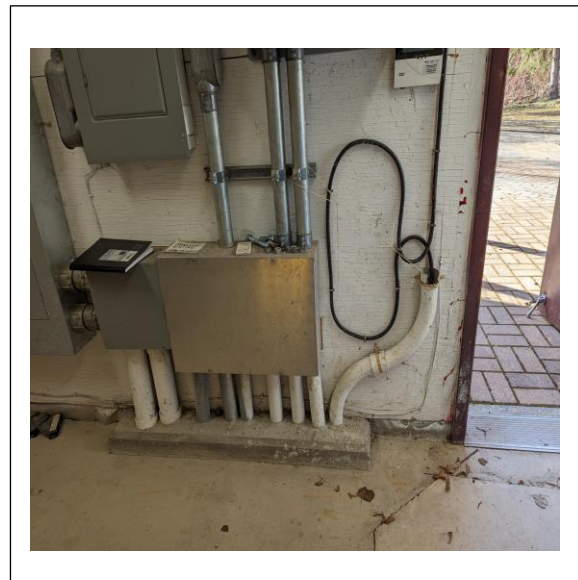
To carry out the removal of the existing Metal-halide high-level sports lighting and replace with new LED type to match or increases the existing illuminance levels. Please reference Musco drawing 148819 for illumination summary.

- Remove and dispose of high-level existing flood lights plus cross arm assemblies and remote ballasts boxes, clean and prepare existing columns to receive the new cross arm assemblies if required.
- List of Lighting Poles A1,A2, B1,B2 C1,C2, Total existing light fittings x 38.
- Isolate remove existing Musco control panel within the Spruce Grove Park concessions mech room.
- To supply & install new LED lighting system to Softball Park field No 3 plus new cross arm assemblies if required to existing columns.
- New LED lighting fittings to be attached to existing lighting poles A1,A2,- B1,B2 - C1,C2.



- Supply and install new Lighting control panel to replace the existing Musco panel within the concessions mechanical room, ideally this should be in the same location to facilitate the existing services.

**Please Note**, this new panel must have the ability to match the existing internal and remote field control systems, details below plus installed LED lighting, at the same time picking up the existing Metal-halide lighting within Softball Park fields No 4 & 5. Including for all controls.



### 1. Remote Lighting Control System:

- Lighting cabinet(s) constructed of NEMA Type 4 aluminum, designed for easy installation with contactors, labeled to match field diagrams and electrical design. Manual off-on-auto selector switches shall be provided.
- System shall allow owner and users with a security code to schedule on/off system operation via a web site, phone, or email up to ten years in advance. Manufacturer shall provide and maintain a two-way TCP/IP communication link. Trained staff shall be available 24/7 to provide scheduling support and assist with reporting needs.
- Controller shall accept and store 7-day schedules, be protected against memory loss during power outages, and shall reboot once power is regained and execute any commands that would have occurred during outage.



## 2. Management Tools:

- Manufacturer shall provide a web-based database and dashboard tool of actual field usage and provide reports by facility and user group. Dashboard shall also show status of luminaire outages, control operation and service. Mobile application will be provided suitable for IOS, Android and Blackberry device.
- Dimming: System shall provide for 3-stage dimming (high-medium-low). Dimming will be set via scheduling options (Website, app, phone, fax, email) or via an onsite user interface tablet or device.
- Existing Musco Lighting control panel. fed from Cutler-Hammer Pow-R Line Panelboard A Line voltage 347/600V and control circuit feed from Panel B 120/208V.
- Within your quote allows to replace and downgrade the existing 30Amp 3Ph Cutler-Hammer MCBs in Panelboard A to the new field 3 LED loading requirement.

## 3. Specifications

- Guaranteed Light Levels light levels are guaranteed to not drop below specified target values for a period of 25 years.
- The goal of this project to minimize spill light to adjoining properties and glare to the players, spectators, and neighbors.
- Spill Light and Glare Control: To minimize impact on adjacent properties, spill light and candela values must not exceed the following levels taken at 3 feet above grade.

|  | Average  | Maximum |
|--|----------|---------|
| Specified Spill Line Horizontal Footcandles            | .0007 fc | 0.00 fc |
| Specified Spill Line Candela (per fixture) Footcandles | 402 fc   | 1826 fc |

Spill Scans: Spill scans must be submitted indicating the amount of horizontal and vertical footcandles along the specified lines. Light levels shall be taken at 30-foot intervals along the boundary line. Readings shall be taken with the meter orientation at both horizontal and aimed towards the most intense bank of lights. Illumination level shall be measured in accordance with the IESNA LM-5-04 after 1 hour warm up.

The first page of a photometric report for all luminaire types proposed showing horizontal and vertical axial candle power shall be provided to demonstrate the capability of achieving the specified performance. Reports shall be certified by a qualified testing laboratory with a minimum of five years' experience or by a manufacturer's laboratory with a current accreditation under the National Voluntary Laboratory Accreditation Program for Energy Efficient Lighting Products. A summary of the horizontal and vertical aiming angles for each luminaire shall be included with the photometric report.

Playing surfaces shall be lit to an average target illumination level and uniformity as specified in the chart below. Lighting calculations shall be developed, and field Average illumination level shall be measured in accordance with the IESNA LM-5-04 (IESNA Guide for Photometric Measurements of Area and Sports Lighting Installations). Illumination levels shall not to drop below desired target values in accordance with IES RP-6-15, Page 2.

| Area of Lighting | Average Target Illumination Levels (Infield/Outfield) | Maximum to Minimum Uniformity Ratio (Infield/Outfield) | Grid Points (Infield/Outfield) | Grid Spacing  |
|------------------|---|--|--------------------------------|---------------|
| Softball         | 50/30fc   | 2:1/2.5:1  | 25 / 156                       | 19.7' x 19.7' |

**Colour**, the lighting system shall have a minimum color temperature of 5700K and a CRI of 75.

#### 4. Manufacturing Requirements:

All components shall be designed and manufactured as a system. All luminaires, wire harnesses, drivers and other enclosures shall be factory assembled, aimed, wired, and tested.

**Durability:** All exposed components shall be constructed of corrosion resistant material and/or coated to help prevent corrosion. All exposed carbon steel shall be hot dip galvanized per ASTM A123. All exposed aluminum shall be powder coated with high performance polyester or anodized. All exterior reflective inserts shall be anodized, coated, and protected from direct environmental exposure to prevent reflective degradation or corrosion. All exposed hardware and fasteners shall be stainless steel, passivated and coated with aluminum-based thermosetting epoxy resin for protection against corrosion and stress corrosion cracking. Structural fasteners may be carbon steel and galvanized meeting ASTM A153 and ISO/EN 1461 (for hot dipped galvanizing), or ASTM B695 (for mechanical galvanizing). All wiring shall be enclosed within the cross-arms, pole, or electrical components enclosure.

#### 5. System Description:

- Lighting system shall consist of the following: Galvanized steel cross-arm assembly if required.
- Manufacturer will supply all drivers and supporting electrical equipment.
- Remote drivers and supporting electrical equipment shall be mounted approximately 10 feet above grade in aluminum enclosures. The enclosures shall be touch-safe and include drivers and fusing with indicator lights on fuses to notify when a fuse is to be replaced for each luminaire. Disconnect per circuit for each pole structure will be in the enclosure. Integral drivers are not allowed.

- Manufacturer shall provide surge protection at the pole equal to or greater than 40 kA for each line to ground (Common Mode) as recommended by IEEE C62.41.2\_2002.
- Wire harness complete with an abrasion protection sleeve, strain relief and plug-in connections for fast, trouble-free installation.
- All luminaires, visors, and cross-arm assemblies shall withstand 150 mi/h winds and maintain luminaire aiming alignment.  
Control cabinet to provide remote on-off control, monitoring, and entertainment features of the lighting system.
- Manufacturer shall provide lightning grounding as defined by NFPA 780 and be UL Listed per UL 96 and UL 96A.

## 6. Electrical

- Electric Power Requirements for the Sports Lighting Equipment:
- Electric power: 347 Volt, 3 Phase
- Maximum total voltage drop: Voltage drop to the disconnect switch located on the poles shall not exceed three (3) percent of the rated voltage.

### Gen Notes

Contractor is responsible for safety in and about the job site during construction, Supply and install of safety guards-fencing as per WorkSafe BC requirements and will be required to submit warranty documentation on completion.

(25-Year Warranty: manufacturer shall supply a signed warranty covering the entire system for 25 years from the date of shipment. Warranty shall guarantee specified light levels. Manufacturer shall maintain specifically funded financial reserves to assure fulfillment of the warranty for the full term.)

All works to be carried out as per manufacturer's details and recommendations.

Contractor to confirm all quantities and measurements at site visit, including all parts, Labour, shipping, and high-level access equipment rental associated with this project.

RMOW, to carry out all electrical isolations, to field lighting and Lighting cabinet.

RMOW, to supply a Data- Comms point next to the existing Musco control cabinet.

**Ideally project to be carried out in Autumn 2024.**



| DESCRIPTION   | UNIT  | LUMP SUM PRICE |
|---|-------|----------------|
| Removal of the existing High level Light Fittings plus Musco control panel (Demo).  |       |                |
| Supply and install of new LED lights to existing lighting poles.  |       |                |
| Remote Lighting Control System: (Lighting cabinet)  |       |                |
| <p>Option 1</p> <p>Dimming: System shall provide for 3-stage dimming (high-medium-low). Dimming will be set via scheduling options (Website, app, phone, fax, email) or via an onsite user interface tablet or device.</p>                                |       |                |
| <p>Option 2</p> <p>Wire harness complete with an abrasion protection sleeve, strain relief and plug-in connections.</p>   |       |                |
| <p>Option 3</p> <p>Customer requires a remote on/off control system for the lighting system. Fields should be proactively monitored to detect luminaire outages over a 25-year life cycle. All communication and monitoring costs for 25-year period.</p> |       |                |
| <p>Options 4</p> <p>Communication Costs: Manufacturer shall include communication costs for operating the control and monitoring system for a period of 25 years.</p>   |       |                |
|   | PST   |                |
|   | GST   |                |
|   | Total |                |

The undersigned agrees to be bound by the terms and conditions of this Request for Quotation and to supply the items listed at the prices quoted. If a purchase order is issued by the RMOW to the undersigned, the undersigned will be bound by and will comply with the terms and conditions contained in the Request for Quotation and the purchase order which will constitute the full and complete agreement between the parties.

Please outline warranty included in your price

---

Please outline extended warranties and price if applicable

---

This Quote request, your response and the attached terms and conditions govern our agreement.

| BIDDER INFORMATION           |     |
|------------------------------|-----|
| Name and title of individual |     |
| Company name                 |     |
| Company address              |     |
|                              |     |
| Phone numbers                | Ph. |
| Email address                |     |

---

Signature of Person authorized to bind the bidder/Supplier

---

Date

## 2.0 REQUEST FOR QUOTATION TERMS AND CONDITIONS

1. Late submissions or quotations will not be accepted or considered. It is the responsibility of the bidder to ensure that the quotation arrives prior to the date and time and at the place indicated in this Request for Quotation.
2. Quotations must be in Canadian funds and include delivery destination duty paid (D.D.P.), Incoterms 2010.
3. If a bidder discovers that it has made an error in its quotation, the bidder may forward a correction notice to the RMOW at this office, but it must be received prior to the closing date and time for the Request for Quotation. Unless otherwise specified, quotations will be open for acceptance for 90 days after the closing date.
4. When quotations have been received and an award made, the successful bidder will be held to its quotation as of the closing of the Request for Quotation irrespective of subsequent representation that mistakes have been made in the quotation originally submitted.
5. Notwithstanding paragraph 4 above, if it appears that an error has been made in a quotation, the RMOW may, in its sole discretion, before awarding an order, communicate with the potential supplier to ascertain if it will supply at the quoted price or withdraw the quotation. If the potential supplier is permitted to withdraw its quotation, the potential supplier will not be considered on this Request for Quotation.
6. The RMOW reserves the right to award this order in part or in full, on the basis of quotations received unless the potential supplier specifies that its quotation is valid only for the complete order.
7. The lowest or any quotation will not necessarily be accepted.
8. In the event of a discrepancy between the unit price and the extended price, the unit price shall govern.
9. Bidders should use the unit of measure shown in the Request for Quotation. Where conversions are required, these should be done by the bidder prior to submitting quotation.
10. Bidders should refer to the Request for Quotation number in all correspondence.
11. Bidders must comply with all applicable laws.
12. Bidders are solely responsible for their own expenses, if any, in preparing an Request for Quotation response and subsequent negotiation with the RMOW, if any.
13. All inquiries related to this Request for Quotation are to be directed to the RMOW, Procurement Services, as noted on the first page of this Request for Quotation. Information obtained from any other source should not be relied upon. Do not contact the facility or end user. Inquiries and responses may be distributed to all bidders at the RMOWs' option.
14. All documents submitted to the RMOW are subject to the disclosure provisions of the Freedom of Information and Protection of Privacy Act.
15. The RMOW will not be obligated in any manner to any potential supplier whatsoever until a Purchase Order has been issued by the RMOW respecting a quote.
16. In the event of a tied bid, the bidder with the closest proximity to the RMOW shall be deemed the successful bidder.

## 3.0 FORM OF CONTRACT

Please see attached a draft copy of a standard services contract form.

*Ref - Spruce Grove Field 3 Lighting Replacement*